

DURDEN & HUNT

INTERNATIONAL



Dunmow Road, Hatfield Heath CM22

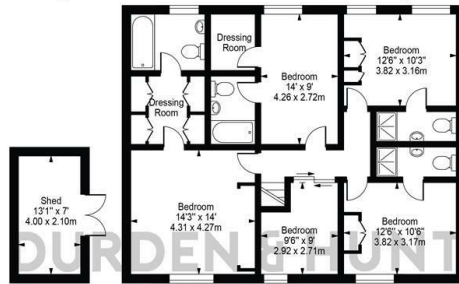
£975,000

- Countryside Location
- Landscaped Rear Garden
- Integrated Kitchen Appliance
- Four Bedrooms With En Suites
- Chain Free
- Open Plan Living
- Downstairs WC
- Ample Off Road Parking
- Multiple Reception Rooms
- Utility & Boot Room

142 High Street, Ongar, Essex, CM5 9JH
01277402068

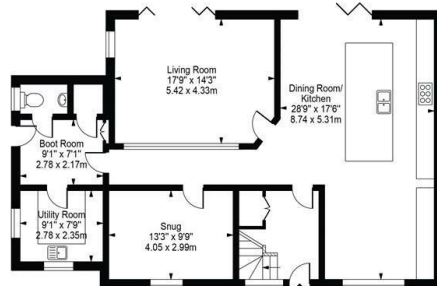
ongar@durdenandhunt.co.uk
<https://www.durdenandhunt.co.uk/>

Foxglove Farm,
Dunmow Road
Approx. Total Internal Area 2363 Sq Ft - 219.56 Sq M
(Including Shed)
Approx. Gross Internal Area Of Shed 90 Sq Ft - 8.40 Sq M



Ground Floor

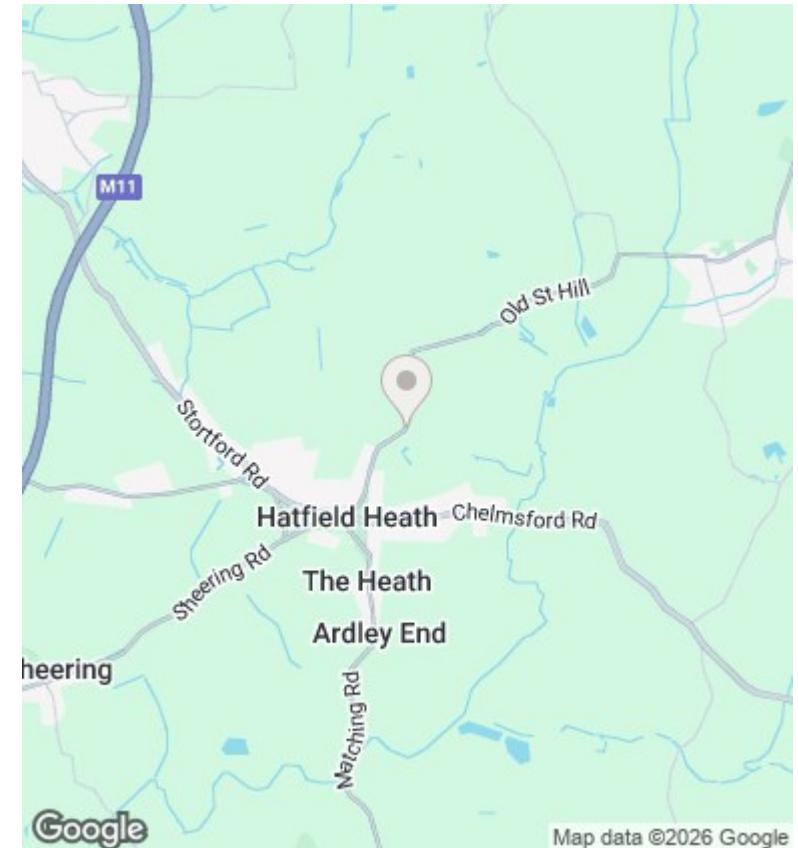
First Floor



Ground Floor

For Illustration Purposes Only - Not To Scale

This floor plan should be used as a general outline for guidance only and does not constitute in whole or in part an offer or contract. Any intending purchaser or lessee should satisfy themselves by inspection, searches, enquiries and full survey as to the correctness of each statement. Any areas, measurements or distances quoted are approximate and should not be used to value a property or be the basis of any sale or let.



Viewings

Viewings by arrangement only.
Call 01277402068 to make an appointment.

Council Tax Band

F

EPC Rating:

C

Energy Efficiency Rating		
	Current	Potential
Very energy efficient - lower running costs		
(92 plus) A		
(81-91) B		81
(69-80) C	71	
(55-68) D		
(39-54) E		
(21-38) F		
(1-20) G		
Not energy efficient - higher running costs		
England & Wales	EU Directive 2002/91/EC	