



Bromley Crescent, Ruislip - HA4 6PG
Guide Price £600,000

 **LAWRENCE RAND**



Key Features & Description

- Three bedroom semi detached house
- Open plan kitchen/lounge/diner
- Guest cloakroom
- Family bathroom
- Rear garden
- Sought after location
- Close to Ruislip Gardens

Offered to the market with no upper chain this three bedroom semi detached house is located in a friendly family orientated residential road, close to shops, amenities and transport links.

The ground floor is all open plan with a large modern kitchen area with a host of wall and base units, ample work tops, integral appliances, and a door providing direct access to the rear garden. The lounge and dining area flow easily and also offer plenty of space for relaxing and dining.

The ground floor benefits from a guest cloakroom.

To the first floor are three comfortable bedrooms all with fitted wardrobes. Completing the first floor is a fresh family bathroom.

Bromley Crescent is a quiet residential road close to the amenities of Ruislip Gardens shops with the Central line tube station just a 5 minute walk. For the motorist the A40/M25 is also in close proximity providing swift access into Central London and the surrounding Home Counties. There are also some of the areas popular schools within the catchment area including Ruislip Gardens Primary school and Ruislip High school.

Presented with care by Lawrence Rand – helping you find the place you'll love to call home.





Nearest Stations

Ruislip Gardens Station – approx 0.3 miles

Ruislip Station – approx 0.7 miles

Ruislip Manor Station – approx 0.8 miles

Verified Material Information:

Local authority: Hillingdon

Council tax band: D

Suppliers:

Electricity supply: Mains, Water supply: Mains
water, Sewerage: Mains

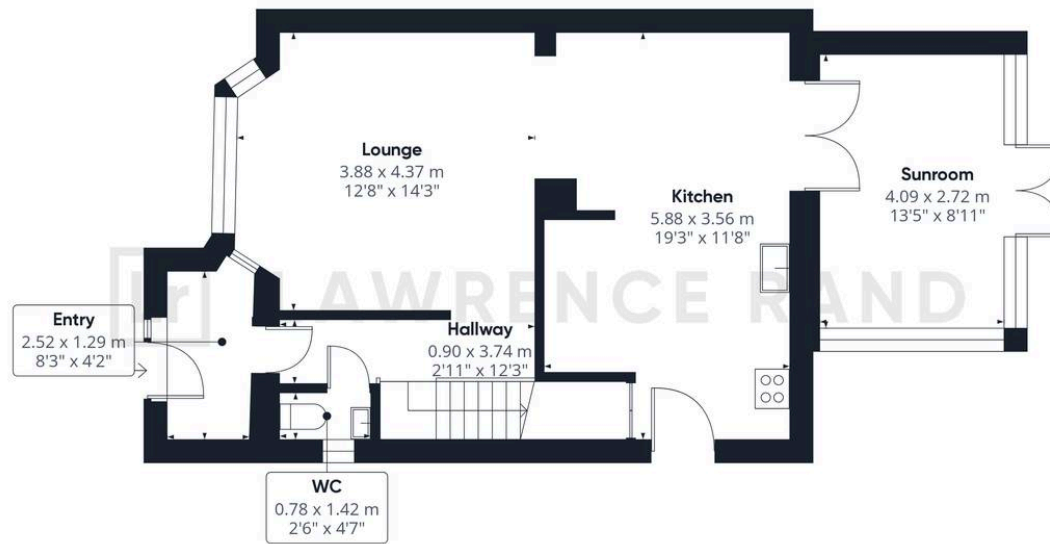
Heating: Gas central heating

Broadband & mobile coverage:

Broadband: FTTP (Fibre to the Premises)

Mobile coverage: O2 - Excellent, Vodafone -
Excellent, Three - Excellent, EE - Excellent





Ground Floor



Floor 1

Lawrence Rand

51 Victoria Road, Ruislip - HA4 9BH

01895 632211

sale@lawrence-rand.co.uk

www.lawrence-rand.co.uk/

Lawrence Rand Limited has made every reasonable effort to ensure the accuracy of the information provided. However, we accept no responsibility for errors, omissions, or misstatements. All measurements, distances, and descriptions are approximate and for guidance only. Prospective purchasers or tenants must verify all details independently. Some images may include AI-generated virtual staging to illustrate the potential of the property and are for visual guidance only. No warranty is given or implied, and these particulars do not form part of any offer or contract. Lawrence Rand reserves the right to amend or withdraw any property without notice.