

Payton
Jewell
Caines



1 Wyndham Street, Port Talbot – SA13 1PR
Port Talbot

£100,000



1 Wyndham Street

Port Talbot

Three bedroom end terraced house comprising entrance hall, through lounge, kitchen with lean-to, first floor bathroom, enclosed rear garden and garage. The property is situated within close proximity to local schools and shops and access is easily gained to the M4 motorway. Ideal first time or investment purchase.

- Three bedroom end terraced house
- Kitchen with lean-to
- First floor bathroom
- Enclosed rear garden
- Garage
- Ideal first time or investment purchase

Entrance

Via PVCu double glazed opaque door leading into the hallway.

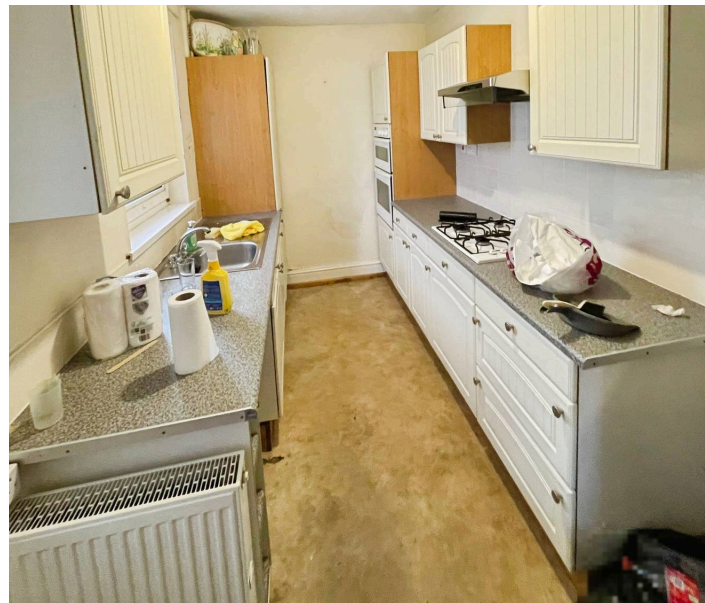
Hallway

Radiator, papered walls, laminate flooring, stairs leading to the first floor and door leading to the lounge.

Lounge

21' 0" x 13' 1" (6.40m x 4.00m)

PVCu double glazed windows overlooking the front and rear, two radiators, laminate flooring and emulsioned walls. Door leading into the kitchen.





Kitchen

13' 3" x 6' 10" (4.05m x 2.09m)

PVCu opaque door leading to the side and PVCu double glazed window to the side. A range of matching wall and base units with roll edge work surfaces housing a stainless steel sink with single drainer, integrated gas hob, electric oven and cooker hood. Under stairs storage and radiator.

Lean-to

Double glazed patio doors and window to the rear, base units with roll edge worktops housing a stainless steel sink.

Landing

Via stairs with fitted carpet, emulsioned walls and loft hatch.

Bedroom 1

10' 9" x 10' 11" (3.28m x 3.34m)

PVCu double glazed window to the front, radiator, fitted carpet and emulsioned walls.

Bedroom 2

10' 7" x 9' 5" (3.23m x 2.86m)

PVCu double glazed window to the rear, radiator, fitted carpet and emulsioned walls.

Bedroom 3

13' 3" x 6' 8" (4.03m x 2.03m)

PVCu double glazed window to the rear, radiator, fitted carpet and emulsioned walls.

Bathroom

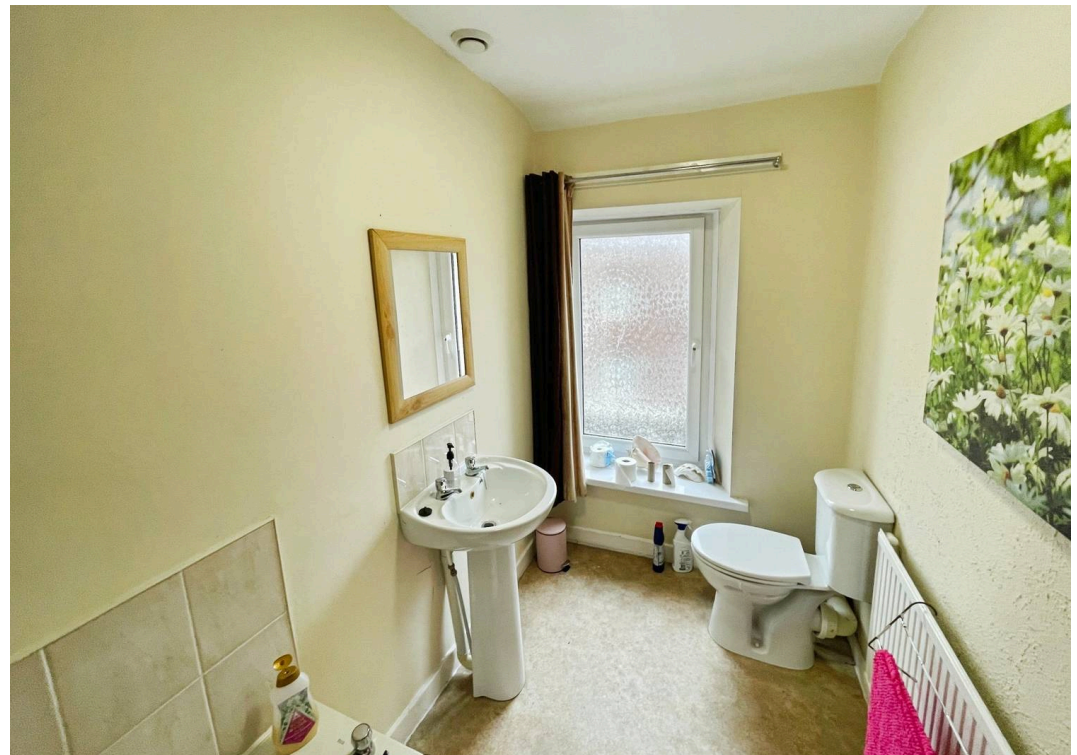
5' 2" x 11' 1" (1.57m x 3.38m)

PVCu double glazed opaque window to the front, radiator, emulsioned walls, vinyl flooring and tiling to the splash back areas. Three piece suite comprising panelled bath with overhead electric shower attachment, pedestal wash hand basin and low level WC.

Outside

The rear garden is laid to lawn with flower and shrub borders in need of some attention. Secure retaining wall with gate and detached garage with door and window to the side







Payton Jewell Caines

Payton Jewell Caines, 53 Station Road – SA13 1NW

01639891268 • porttalbot@pjchomes.co.uk • pjchomes.co.uk/

These property details are provided as a general guide only. Whilst we aim for accuracy, measurements, photographs, floor plans, and descriptions should not be relied upon as statements of fact. Buyers should carry out their own checks regarding the property, services, and specifications. Fixtures and fittings are only included if specifically stated. Appliances and services have not been tested.