



**Connells**

Allyn Court Twyford Road  
Eastleigh



## Property Description

This beautifully presented and spacious two-bedroom duplex apartment is ideally situated in a fantastic Eastleigh location, offering excellent access to local amenities and superb travel links.

The property benefits from an under cover allocated parking space, private storage and useful communal bike storage, adding to its practicality and appeal.

Internally, the apartment is thoughtfully arranged over two floors.

On the lower level, you are welcomed by a convenient cloakroom, alongside a modern fitted kitchen complete with integrated appliances, which flows seamlessly into a bright and generously sized open-plan lounge. French doors open onto a charming Juliet balcony, allowing plenty of natural light to fill the space.

Also on this floor is the second bedroom, currently utilised as a dining room, offering flexibility to suit a variety of lifestyles.

Upstairs, the impressive principal bedroom provides a comfortable double space with built-in wardrobes, while the landing area features an additional section suited for a home office or study space. The main bathroom is also located on this floor and is well-appointed with both a separate bath and shower.

Well maintained throughout, this attractive home is perfect for first-time buyers, professionals, or investors alike.

Combining space, style, and a highly convenient location, this is a property not to be missed.

## Entrance Hall

Storage cupboard.

## Cloakroom

Wash hand basin. Toilet. Extractor fan. Part tiled.

## Lounge

Open plan to kitchen. Double glazed window to front aspect. Juliet Balcony to front aspect with double glazed doors. Radiator x2. TV port.

## Kitchen

Open lounge to lounge. Fitted kitchen with wall and base units. Integral oven and induction hob with extractor hood. Space for washing machine. Integrated fridge freezer. Boiler.

## Landing

Double glazed window to front aspect. Office space.

## Bedroom 1

Upper floor. Double glazed window to front aspect. Built in wardrobes. Radiator. Large double room.

## Bedroom 2

Double glazed window to front aspect. Radiator. (currently used as a dining room).

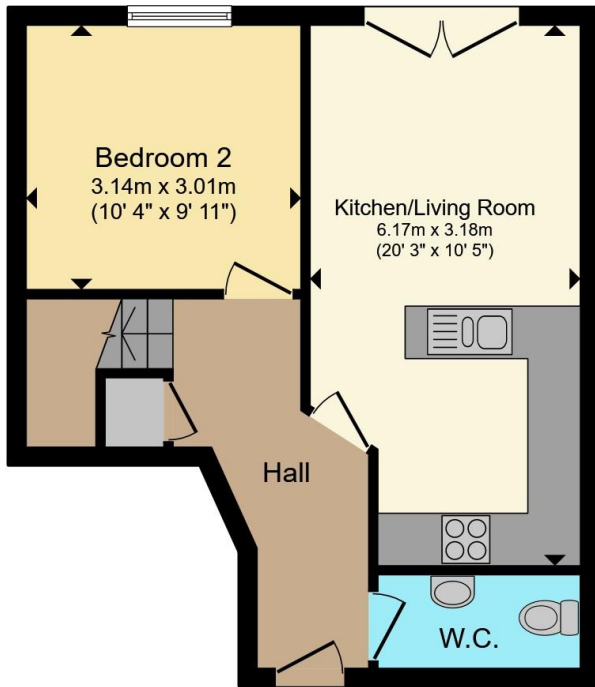
## Bathroom

Toilet. Wash hand basin. Shower cubicle. Bath. Extractor fan. Radiator.

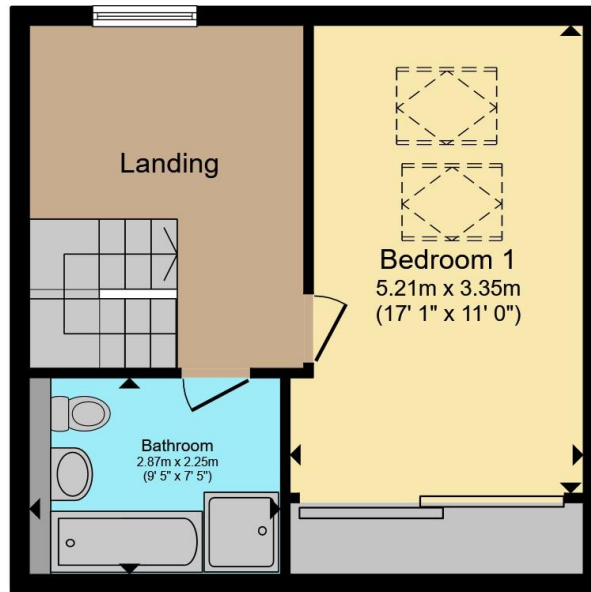
## Outside

One under cover allocated parking space. Private storage. Communal bike store





**Ground Floor**



**First Floor**

Total floor area 79.8 m<sup>2</sup> (858 sq.ft.) approx

This floor plan is for illustrative purposes only. It is not drawn to scale. Any measurements, floor areas (including any total floor area), openings and orientation are approximate. No details are guaranteed, they cannot be relied upon for any purpose and they do not form part of any agreement. No liability is taken for any error, omission or misstatement. A party must rely upon its own inspection(s). Powered by [www.propertybox.io](http://www.propertybox.io)



To view this property please contact Connells on

**T 02380 618 343**  
**E [eastleigh@connells.co.uk](mailto:eastleigh@connells.co.uk)**

19 Market Street  
 EASTLEIGH SO50 5RH

EPC Rating: C Council Tax Band: B

Service Charge: 1376.00

Ground Rent: 150.00

Tenure: Leasehold

**view this property online [connells.co.uk/Property/EGH309604](http://connells.co.uk/Property/EGH309604)**

This is a Leasehold property with details as follows; Term of Lease 125 years from 01 Jan 2002. Should you require further information please contact the branch. Please Note additional fees could be incurred for items such as Leasehold packs.



1. MONEY LAUNDERING REGULATIONS Intending purchasers will be asked to produce identification documentation at a later stage and we would ask for your co-operation in order that there will be no delay in agreeing the sale. 2. These particulars do not constitute part or all of an offer or contract. 3. The measurements indicated are supplied for guidance only and as such must be considered incorrect. Potential buyers are advised to recheck measurements before committing to any expense. 4. We have not tested any apparatus, equipment, fixtures, fittings or services and it is in the buyers interest to check the working condition of any appliances.

Connells Residential is registered in England and Wales under company number 1489613, Registered Office is Cumbria House, 16-20 Hockliffe Street, Leighton Buzzard, Bedfordshire, LU7 1GN. VAT Registration Number is 500 2481 05.

**See all our properties at [www.connells.co.uk](http://www.connells.co.uk) | [www.rightmove.co.uk](http://www.rightmove.co.uk) | [www.zoopla.co.uk](http://www.zoopla.co.uk)**

Property Ref: EGH309604 - 0003