



AGAR PLACE, NW1

£575,000

One double bedroom
Triplex apartment
Long lease
Private terrace
Close to transport links
Two toilets

@marshandparsons
marshandparsons.co.uk

MARSH &
PARSONS



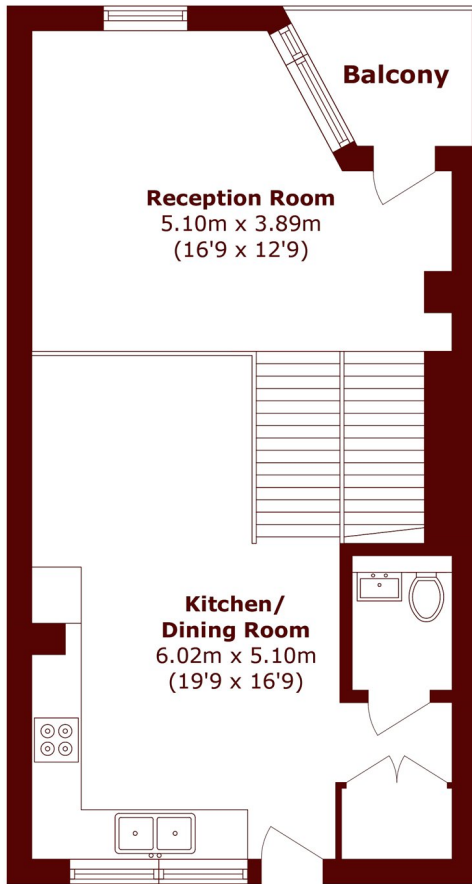
ABOUT THE PROPERTY

This stunning one-bedroom, two-bathroom triplex apartment offers bright and spacious living throughout. Finished to a high standard, the property also benefits from two private terraces.

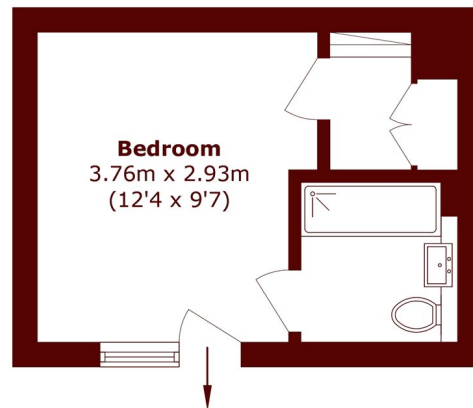
Agar Place is ideally located close to the amenities of both Camden Town and King's Cross, with each area offering an excellent selection of shops and restaurants. Kentish Town, King's Cross, and St Pancras are all within easy reach.



STEP INSIDE AGAR PLACE



First Floor



Second Floor

Total area (approx.): 67.4 sq. m (725.4 sq. ft)
Balcony area (approx.): 3.0 sq. m (32.2 sq. ft)

Camden
020 7244 2200

Energy Rating: B We aim to make our particulars both accurate and reliable. However, they are not guaranteed; nor do they form part of an offer or contract. If you require clarification on any points then please contact us, especially if you're traveling some distance to view. Please note that appliances and heating systems have not been tested and therefore no warranties can be given as to their good working order

**MARSH &
PARSONS**