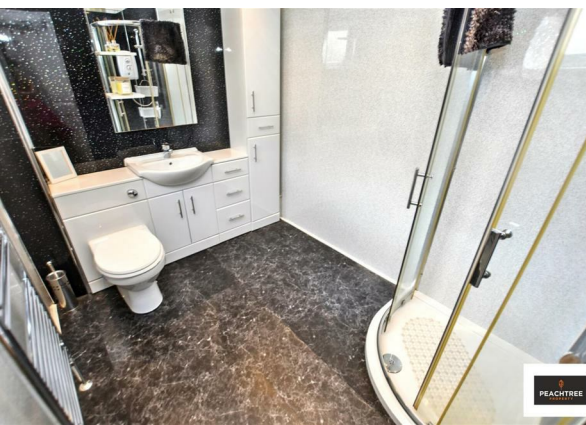


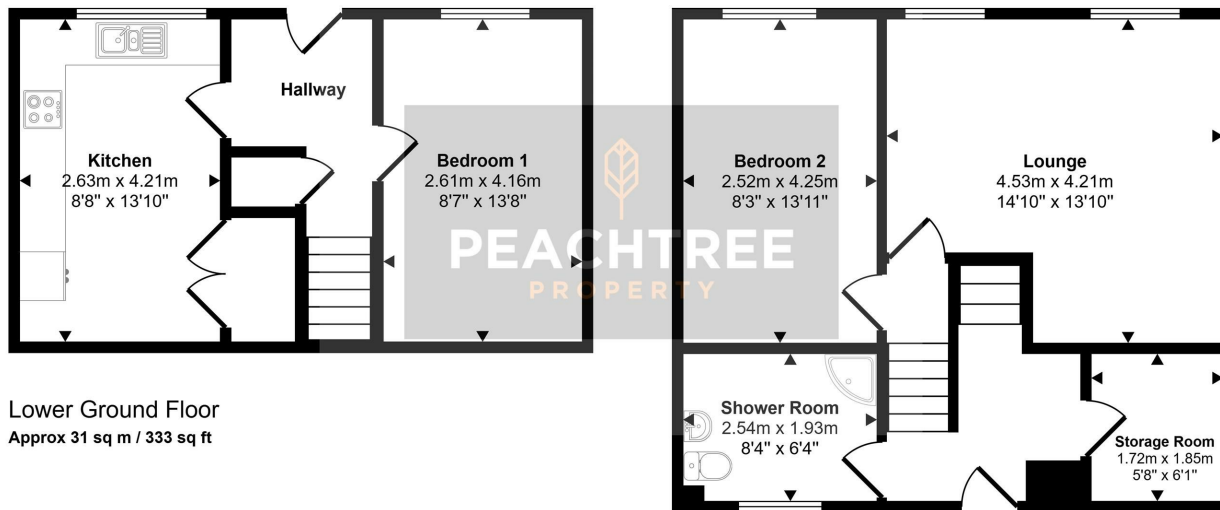
28 Hamilton Drive, Erskine, PA8 6DA
Offers Over £129,995
EPC Rating: D Council Tax Band: D



Peachtree Property are thrilled to welcome to the market this well-appointed two bedroom terraced villa situated in a popular pocket of Erskine.

28 Hairst Street Hairst St
 Renfrew
 PA4 8QY
 0141 577 1111
 info@peachtreeproperty.co.uk

Approx Gross Internal Area
 76 sq m / 816 sq ft



Lower Ground Floor
 Approx 31 sq m / 333 sq ft

Ground Floor
 Approx 45 sq m / 483 sq ft

This floorplan is only for illustrative purposes and is not to scale. Measurements of rooms, doors, windows, and any items are approximate and no responsibility is taken for any error, omission or mis-statement. Icons of items such as bathroom suites are representations only and may not look like the real items. Made with Made Snappy 360.

Energy Efficiency Rating		Current	Potential
Very energy efficient - lower running costs			
(92 plus) A			
(81-91) B			
(69-80) C			
(55-68) D		65	72
(39-54) E			
(21-38) F			
(1-20) G			
Not energy efficient - higher running costs			
Scotland		EU Directive 2002/91/EC	