



Battersea Powers Station, Holmby House

£3,100 pcm

- Studio apartment
- 2nd floor
- Large open plan dining area
- 442 sq ft living space
- Spacious 48 sq ft winter garden
- Five star residents' facilities
- 24-hour concierge and security
- Sought after location
- Great transport links

This exceptional 444 sq ft studio apartment is located on the second floor of Holmby House, within the highly sought-after Battersea Power Station development.

The premium property offers modern facilities and high-end amenities designed specifically for comfortable, stylish city living. The bright interior features a large open-plan reception and kitchen area with integrated appliances and excellent storage. This clever layout flows seamlessly into a private winter garden, situated adjacent to a dedicated sleeping zone. The bedroom area boasts floor-to-ceiling built-in storage with self-illuminating shelves, while a luxury three-piece bathroom suite completes this fine accommodation. Perfect for residents seeking a premium lifestyle, the apartment combines spacious living with a truly prime location. It offers an ideal blend of luxury, convenience, and functionality.

The building, Prospect Place, is situated just steps from Electric Boulevard. This vibrant, multi-level street connects the community directly to the Zone 1 London Underground station. It is lined with diverse shops, fine restaurants, and popular local cafes. These landmark buildings form an impressive gateway to the iconic Battersea Power Station.





ONE LONDON

PROPERTY

*Holmby House, Battersea
Power Station, SW11*

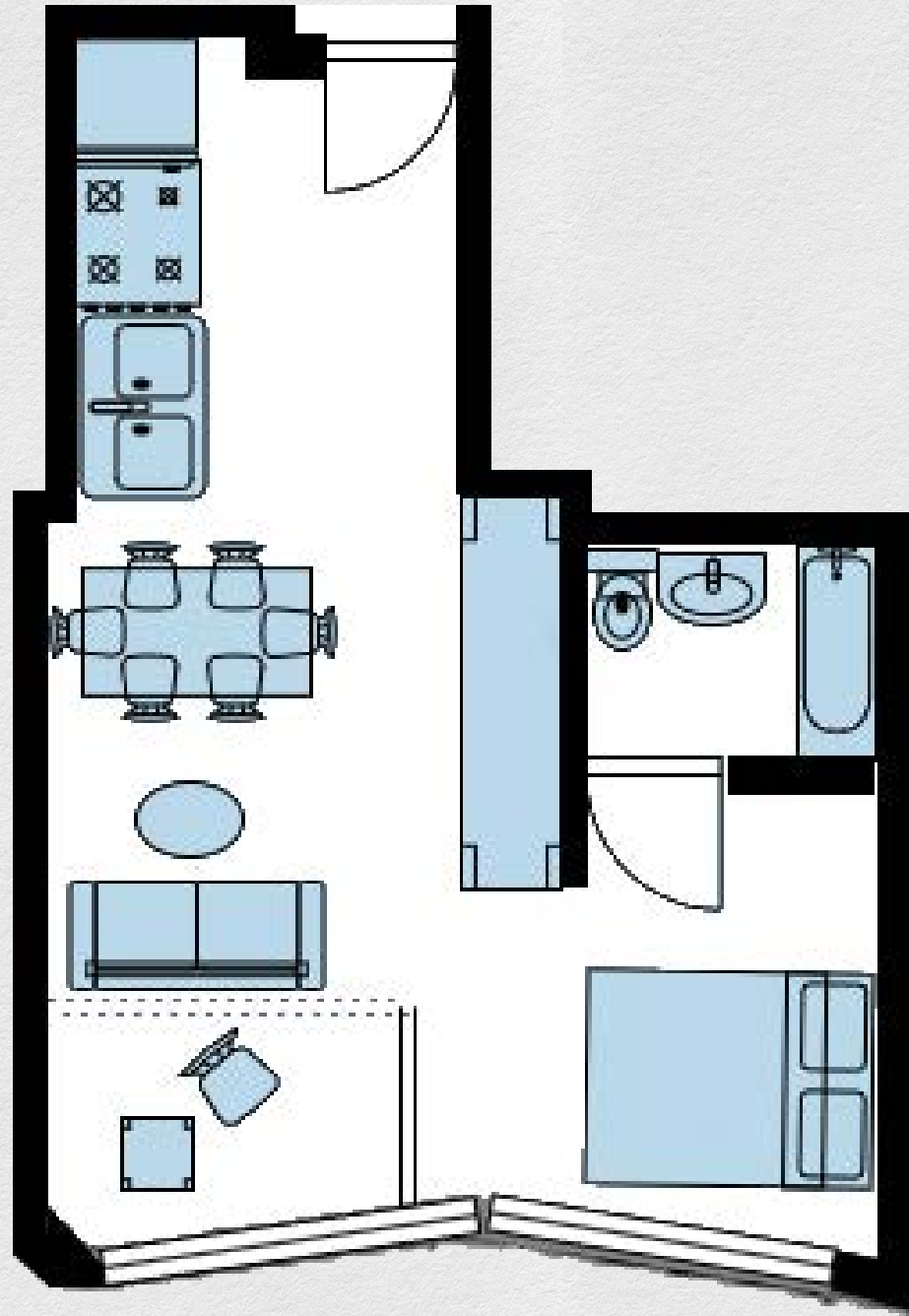
SIZE

443 sq ft

Studio apartment

CONTACT

*0207 856 0396
info@one-london.uk
www.one-london.uk*



*** For illustration purposes only. Could not be to scale.
One-London aims to ensure accuracy but is not liable
for any discrepancies.*

BHH102