



## Durnsford Road, SW19

### £370,000

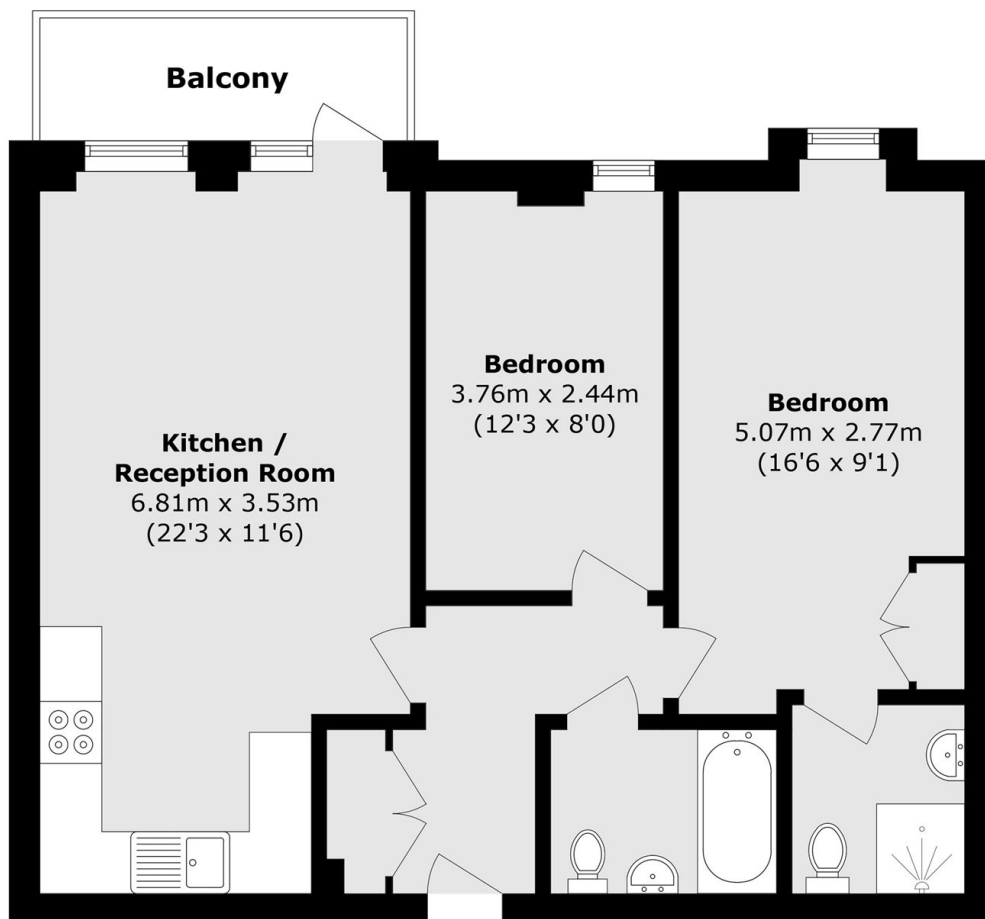
A two double bedroom two bathroom apartment located on the upper ground floor with its own private balcony. Complete with secured underground allocated parking and communal gardens.

Ideally located within close proximity of Wimbledon Park and an outstanding primary school. There's easy access to both Earlsfield and Southfields where there are excellent transport links and a huge variety of shops, bars and restaurants.

### Features

- Two Double Bedrooms
- Two Bathrooms
- Private Balcony
- Communal Gardens
- Modern Development
- Allocated Parking

# Durnsford Road, London, SW19



Total area (approx.): 62.0 sq. m (667.4 sq. ft)

Balcony area (approx.): 4.2 sq. m (45.2 sq. ft)