

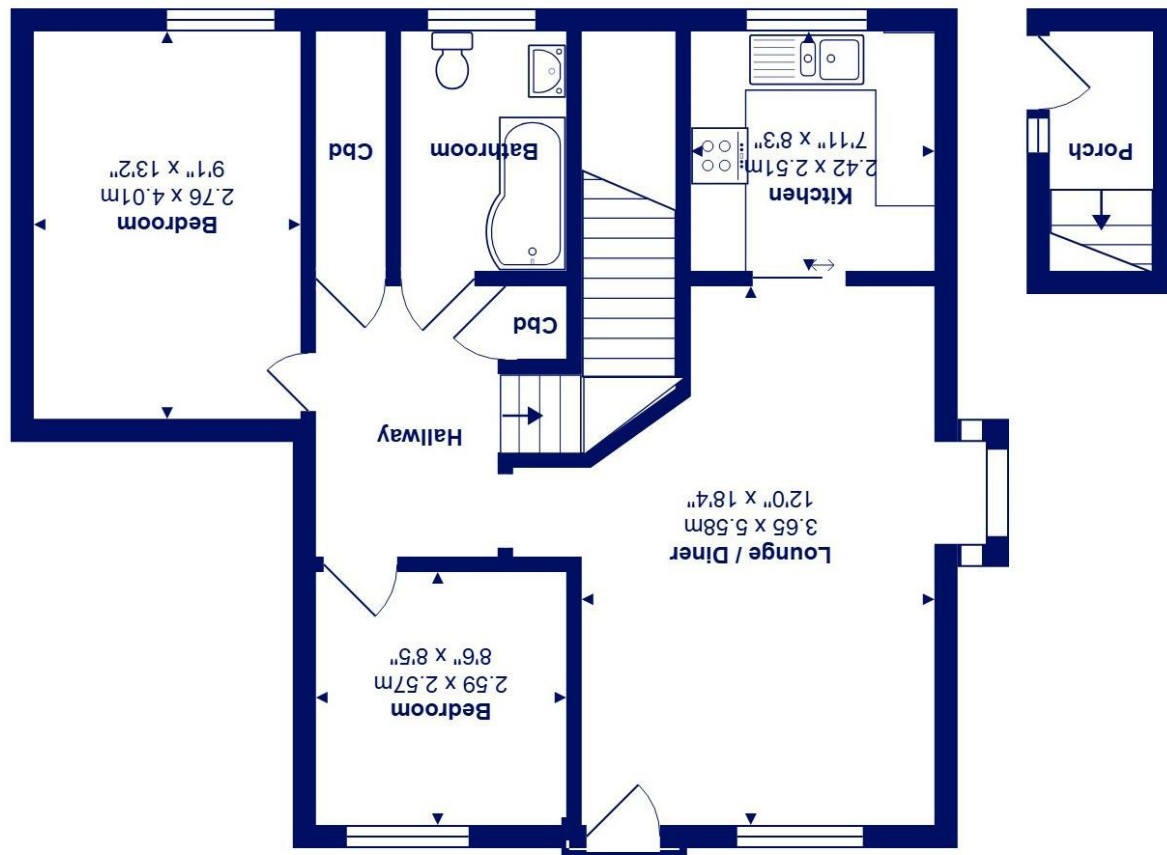


Total Area: 67.5 m<sup>2</sup> ... 727 ft<sup>2</sup>  
All measurements are approximate and for display purposes only



First Floor

Ground Floor



4 Bure Court, Sopwith Close, BH23 4JB

£225,000

**Mitchells**  
1963 — TODAY

A beautifully presented two bedroom first floor apartment situated on this exclusive development for the over 55's on the fringes of Friars Cliff and right by the local shops, bus routes and beach. No chain.

Bure Court is surrounded by well-maintained gardens and benefits from a communal car parking area and bike store.

- First floor apartment of approximately 730 sqft
- Two double bedrooms
- Spacious lounge-diner with Juliette balcony overlooking the communal gardens
- Modern kitchen
- Family bathroom with heated towel rail
- Entrance hall and plenty of storage
- Residence car park and bike store
- Well maintained communal gardens
- Exclusive over 55's development in enviable location
- Leasehold : 57 years remaining Service charge: £1905 PA Ground rent : £100PA

EPC Rating Band: D  
Council Tax Band: C  
Leasehold

Successful buyers will be required to complete online identity checks provided by Lifetime Legal. The cost of these checks is £45 inc. VAT per purchase which is paid in advance, directly to Lifetime Legal. This check verifies your identity in line with our obligations as stipulated by our regulatory body, HMRC

