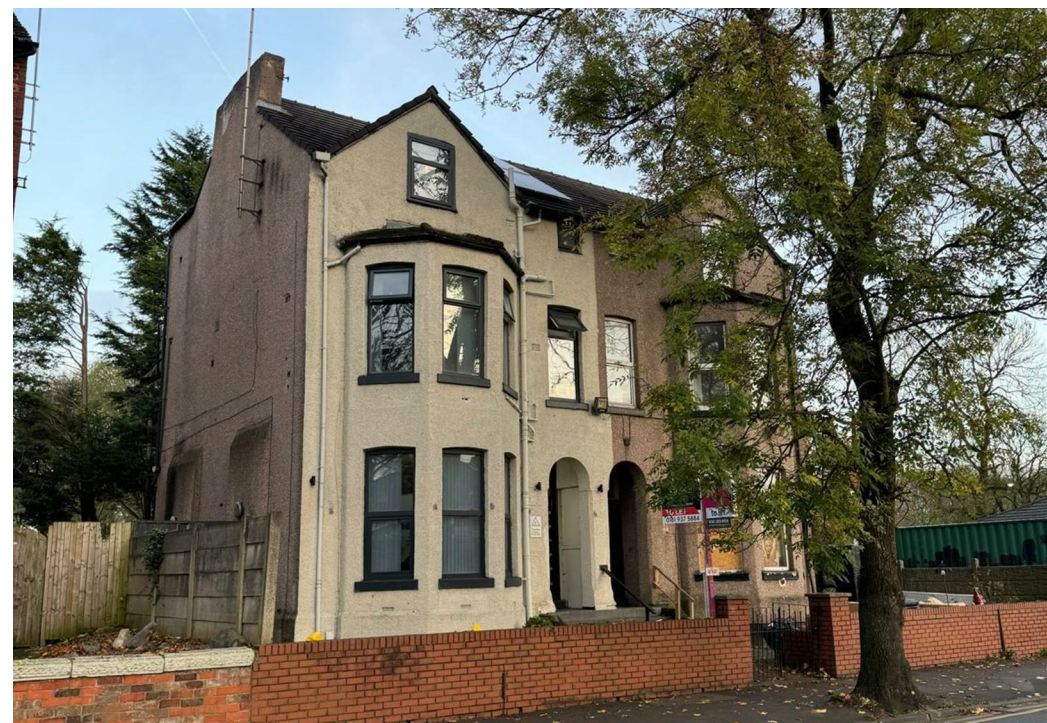
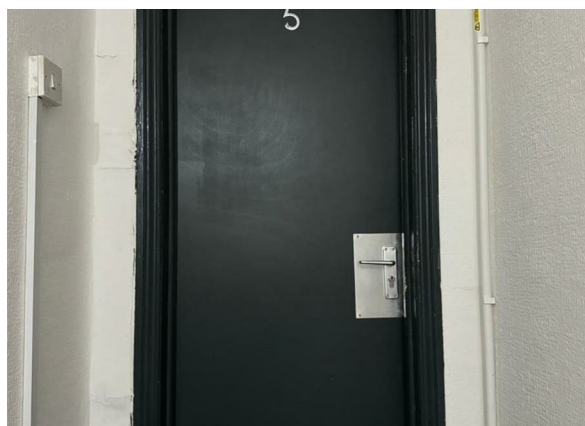
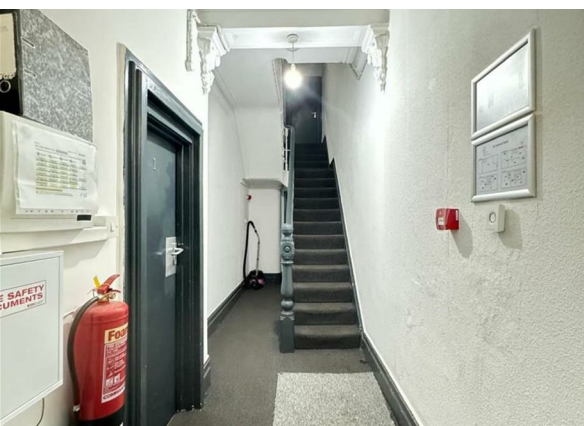
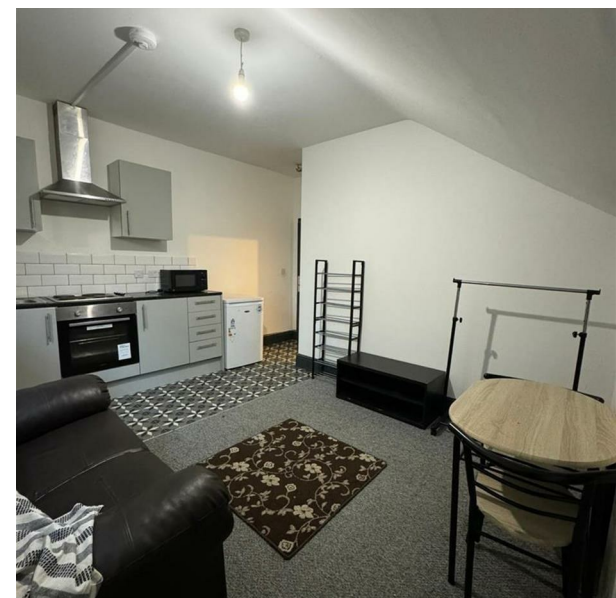
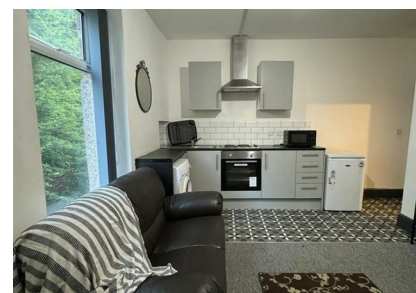


Ash Tree Road, Manchester, M8 5SA

£895 Per Calendar Month

Council Tax Band:



This charming and well-maintained 1-bedroom flat is now available for rent in the popular Crumpsall area of Manchester. Located on a quiet residential street, this property offers a comfortable and cozy living space, ideal for singles or couples looking for a convenient city lifestyle.

Key Features:

- Spacious Double Bedroom: Well-proportioned and bright, providing ample space for a comfortable setup.
- Inviting Reception Room: Perfect for relaxing or entertaining, with plenty of natural light.
- Modern Bathroom: Fitted with a sleek three-piece suite for your convenience.
- Well-Equipped Kitchen: Functional and efficient, featuring plenty of counter and storage space.

Location Highlights:

- Nearby North Manchester General Hospital: Just a short walk away, making it an excellent choice for healthcare professionals.
- Proximity to Schools: Close to a range of highly-rated local schools, including Crumpsall Lane Primary School and King David High School, making it perfect for small families or those considering future schooling options.
- Excellent Transport Links: Within easy reach of Crumpsall Metrolink station and bus routes, providing quick access to Manchester City Centre and surrounding areas.
- Local Amenities: Situated near shops, restaurants, parks, and other conveniences, ensuring everything you need is right on your doorstep.

Contact us today to make this lovely property your new home.

Open House Estate Agents



Open House South East Manchester



Energy Efficiency Rating		
	Current	Potential
Very energy efficient - lower running costs		
(92 plus) A		
(81-91) B		
(69-80) C		
(55-68) D		
(39-54) E	44	
(21-38) F		
(1-20) G		
Not energy efficient - higher running costs		
England & Wales		EU Directive 2002/91/EC