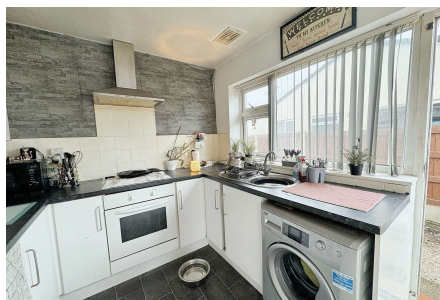


26 Llys Madoc, Towyn, Conwy, LL22 9NH

£148,000

🛏️ 2 🚿 1 🛋️ 1

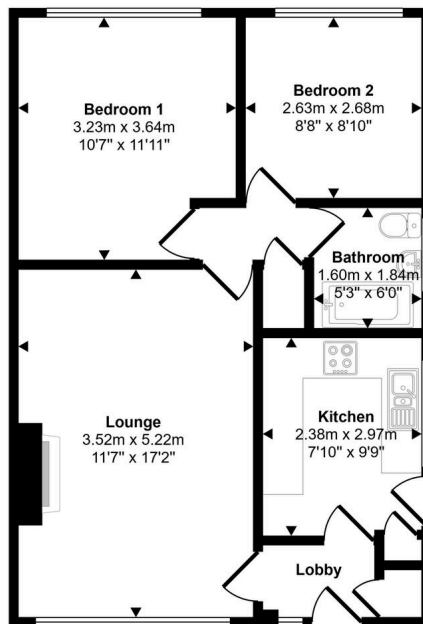


This semi detached bungalow is within a popular residential estate, close to the heart of Towyn with its many attractions. The property affords lounge, kitchen, two double bedrooms and bathroom and stands in gardens which have been paved for ease of maintenance. There is ample driveway parking and a detached garage. Gas central heating, double glazing and uPVC guttering is also fitted. There are regular bus services into the nearby towns of Rhyl and Abergelge and the bungalow is just a 'stones throw' from the park.

Key Features

- EPC rating - D
- Council tax band - C
- Easy to maintain gardens
- Lounge/diner
- Close to local amenities
- Freehold
- Garage
- Two double bedrooms
- Sought after location
- Semi detached bungalow

Approx Gross Internal Area
54 sq m / 585 sq ft



Floorplan

This floorplan is only for illustrative purposes and is not to scale. Measurements of rooms, doors, windows, and any items are approximate and no responsibility is taken for any error, omission or mis-statement. Icons of items such as bathroom suites are representations only and may not look like the real items. Made with Made Snappy 360.

CONSUMER PROTECTION REGULATIONS 2008 AND THE BUSINESS PROTECTION FROM MISLEADING MARKETING REGULATIONS 2008

These particulars, whilst believed to be accurate, are set out for guidance only and do not constitute any part of an offer or contract. Prospective purchasers or tenants should not rely on these particulars as statement or representation of fact, but must satisfy themselves by inspection or otherwise as to their accuracy. No person in the employment of PETER LARGE Estate Agents has the authority to make or give any representation or warranty in relation to the property. Room sizes are approximate and all comments are of the opinion of PETER LARGE Estate agents having carried out a walk through inspection. These sales particulars are prepared under the consumer regulations 2008 and are governed by the business from misleading marketing regulations 2008.