



## Chepstow Villas, W11

£595,000

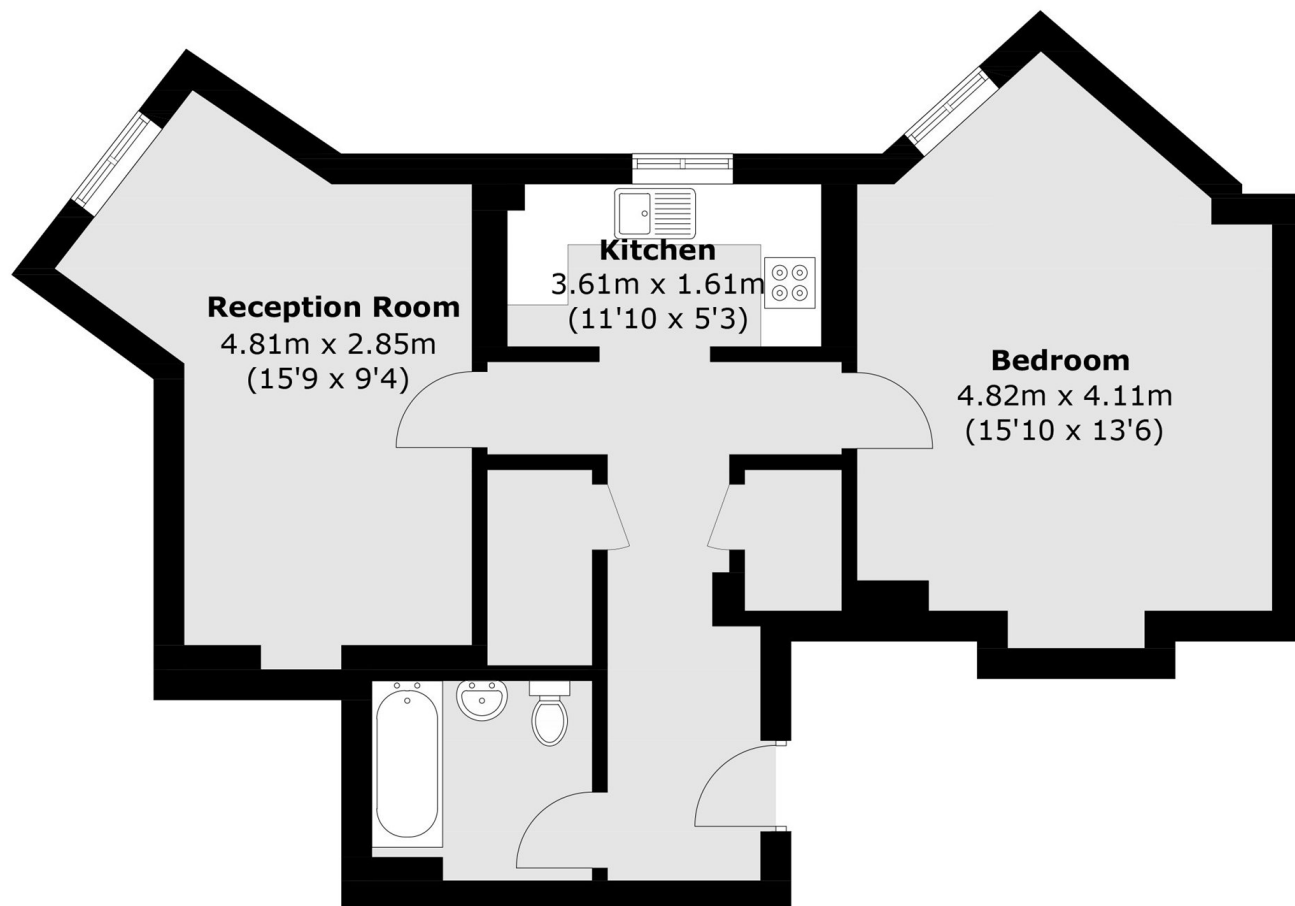
An unmodernised refurbishment project in a portered red brick mansion block. Currently configured as a spacious one bed with a separate kitchen, this property is ideal for refurbishment and potential reconfiguration (subject to the usual consents). Service charge and lease length are in discussion with the Management Agent.

Chepstow Villas is a prime Notting Hill address, in between Westbourne Grove with its chic boutiques and restaurants and convenient Notting Hill Gate, with plenty of transport links to choose from. Portobello Road and the green spaces of Hyde Park are also close by.

### Features

- One Double Bedroom
- Refurbishment Project
- Red Brick Mansion Block
- Porter
- Prime Notting Hill

# Chepstow Villas, London, W11



Total area (approx.): 60.2 sq. m ( 649.0 sq. ft)