



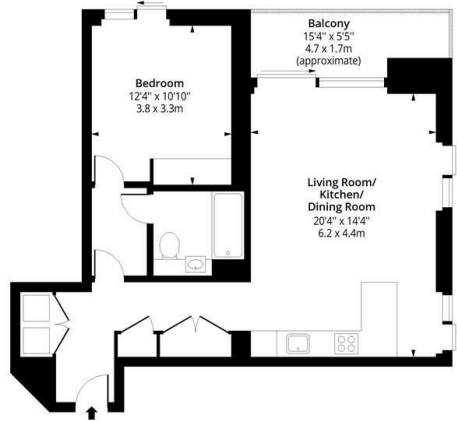
63, 27 Albert Embankment, London, SE1 7AP

£3,500 Per month

- Gym
- Bowling Alley
- Swimming Pool
- 24 hour Concierge

### Albert Embankment, SE1

Approx. Gross Internal Area 652 Sq Ft - 60.57 Sq M  
 Approx. Gross Balcony Area 75 Sq Ft - 6.97 Sq M

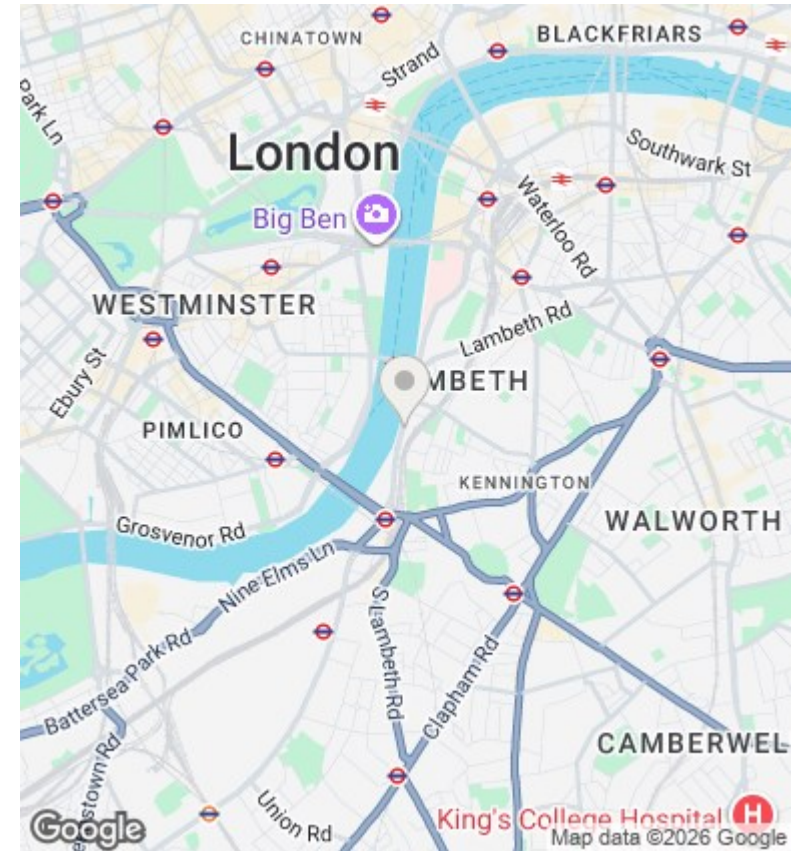


**7th Floor**  
 Floor Area 652 Sq Ft - 60.57 Sq M



Measured according to RICS IPMS2. Floor plan is for illustrative purposes only and is not to scale. Every attempt has been made to ensure the accuracy of the floor plan shown, however all measurements, fixtures, fittings and data shown are an approximate interpretation for illustrative purposes only. 1 sq m = 10.76 sq feet.  
 ipaplus.com

se: 10/10/2023



### Directions

### Viewings

Viewings by arrangement only. Call 0208 075 4927 to make an appointment.

### Council Tax Band

G

### EPC Rating:

B

Energy Efficiency Rating		Current	Potential
<i>Very energy efficient - lower running costs</i>			
(92 plus) <b>A</b>			
(81-91) <b>B</b>		84	84
(69-80) <b>C</b>			
(55-68) <b>D</b>			
(39-54) <b>E</b>			
(21-38) <b>F</b>			
(1-20) <b>G</b>			
<i>Not energy efficient - higher running costs</i>			
<b>England &amp; Wales</b>		EU Directive 2002/91/EC	