

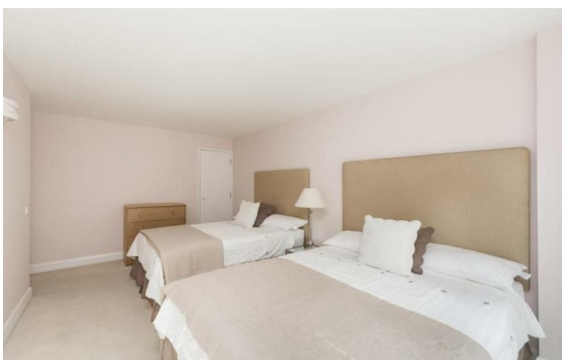
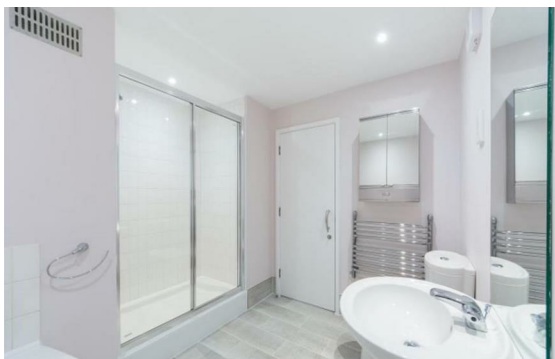


[Park Road, Marylebone, London, NW1](#)

Rent £1,275 PCM

4 Bed | 2 Bath | 1 Reception

Please call us on 020 7724 2233 or email us info@newingtonstates.com to book a viewing.



A beautifully refurbished four-bedroom, two-bathroom apartment set on the lower ground floor of an attractive mansion building. The property offers spacious accommodation, excellent storage throughout, and modern finishes.

Ideally located just moments from Baker Street Station, with easy access to Regent's Park and the excellent amenities of Marylebone.

EPC rating: C

Energy Efficiency Rating: C

Agents Note: Whilst every care has been taken to prepare these particulars, they are for guidance purposes only. All measurements are approximate and are for general guidance purposes only and whilst every care has been taken to ensure their accuracy, they should not be relied upon and potential buyers/tenants are advised to recheck the measurements.

NEWINGTON
— ESTATES —

60 Upper Montagu Street

London

W1H 1SN

020 7724 2233

info@newingtonestates.com

<http://www.newingtonestates.com>