



OAKFIELD

Gillsmans Hill, St. Leonards, TN38 0SP
£1,425 Per Calendar Month



Gillsmans Hill, St. Leonards, TN38 0SP

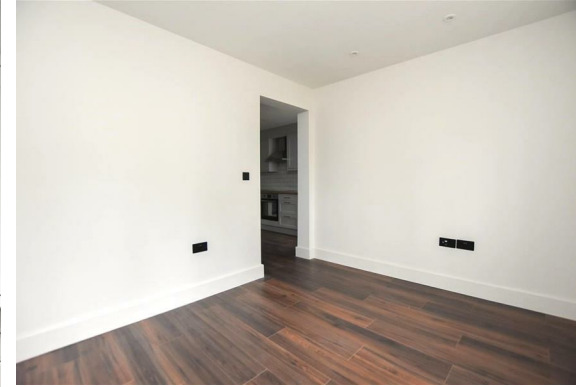
Having been decorated to a modern standard throughout, this charming double fronted weather boarded 2 to 3 bedroom cottage is now available.

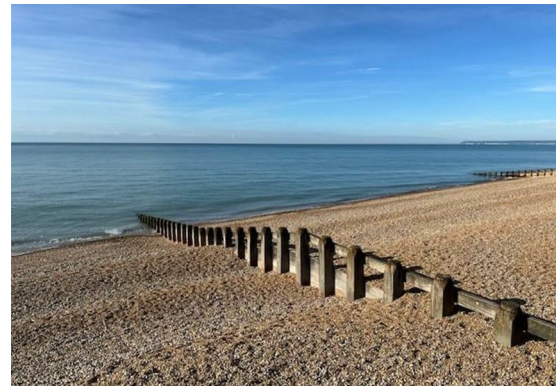
The ground floor is arranged as a spacious kitchen breakfast room which features newly fitted units, electric hob and oven, and integrated fridge / freezer. The separate living room enjoys views over the rear garden. Also located on the ground floor is a handy downstairs WC, and a stylish dining room which could be used as a third bedroom.

The first floor houses two well proportioned bedrooms together with a luxury family bathroom where there is a bath with a shower and screen over.

Situated near to a major supermarket, local schools and bus routes. St Leonards Warrior Square mainline station and the seafront are approximately a 15 minute walk away.

Annual household income threshold:
£42,750
Available immediately mid May 2026





Living Room

11'5" x 9'0" (3.48m x 2.76m)

Kitchen / Breakfast Room

11'3" x 10'11" (3.44m x 3.35m)

Bedroom 3 / Dining Room

14'8" x 8'4" (4.48m x 2.55m)

Bedroom 1

14'8" x 8'4" (4.48m x 2.55m)

Bedroom 2

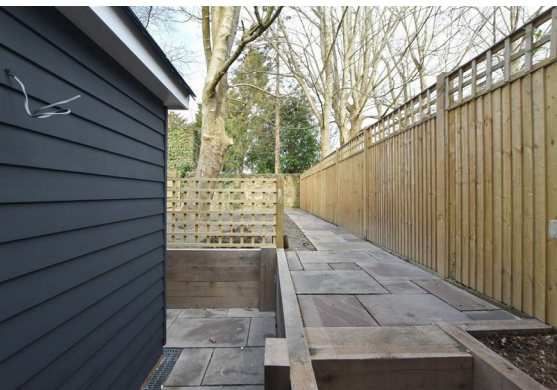
9'9" x 8'5" (2.99m x 2.58m)

Bathroom

7'8" x 4'6" (2.35m x 1.39m)

Rear Garden

Council Tax Band B - £2,081.78 Per Annum



Floor Plan

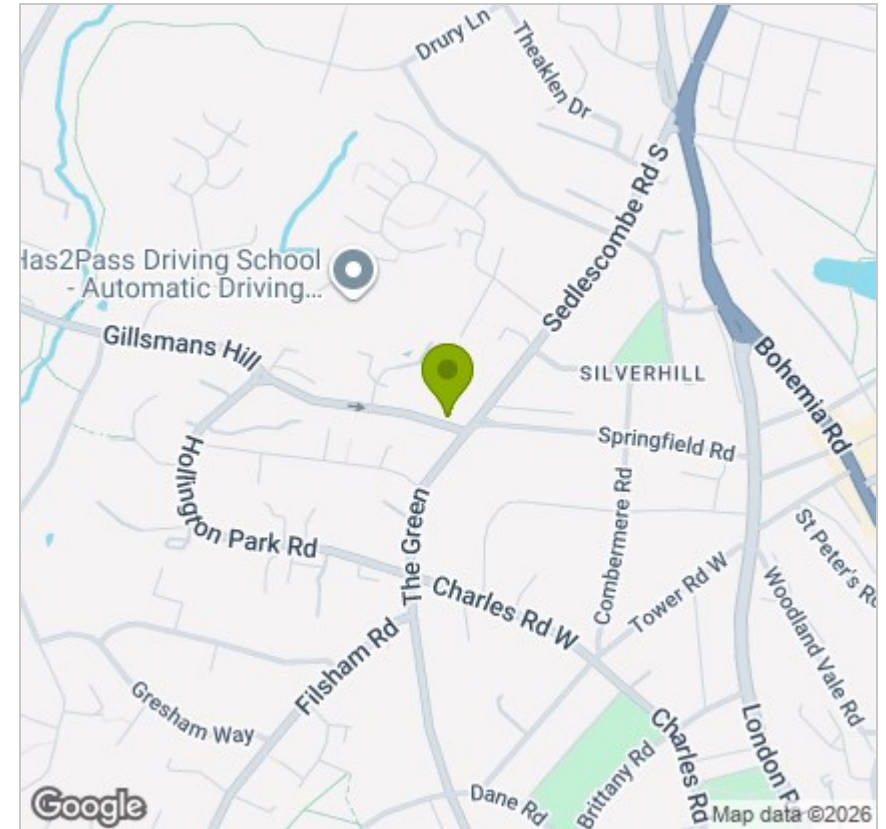


Viewing

Please contact us on 01424 446644 if you wish to arrange a viewing appointment for this property or require further information.

These particulars, whilst believed to be accurate are set out as a general outline only for guidance and do not constitute any part of an offer or contract. Intending purchasers should not rely on them as statements of representation of fact, but must satisfy themselves by inspection or otherwise as to their accuracy. No person in this firm's employment has the authority to make or give any representation or warranty in respect of the property.

Area Map



Energy Efficiency Graph

