



Beacon Street, Lichfield, WS13 - Beautiful Four Bedroom Character Property

Offers Over £475,000

🛏️ 4 🚿 1 🚗 2



Discover this exceptional four-bedroom character home, offering beautifully presented and versatile living spaces across three floors, ideally situated on Beacon Street in Lichfield.

The property is located in the historic city of Lichfield, renowned for its stunning cathedral and vibrant city centre. Residents will benefit from immediate access to a wealth of amenities, including a diverse range of independent shops, high street retailers, charming cafes, pubs, and fine dining restaurants. Lichfield boasts excellent local schools and a rich cultural heritage with numerous parks and recreational facilities. Commuters are well-catered for with two mainline railway stations, Lichfield City and Lichfield Trent Valley, providing direct links to Birmingham and London Euston. Major road networks such as the A38 and M6 Toll are also easily accessible, ensuring superb connectivity.

The accommodation is thoughtfully arranged over three floors, beginning with a welcoming entrance hall that provides access to a practical cellar. The ground floor features a spacious, open-plan living diner with characterful log burners and a modern fitted kitchen that offers direct access to the garden. Ascending to the first floor, you will find three well-proportioned bedrooms and a contemporary family bathroom. The second floor hosts an impressive principal bedroom suite with a dedicated dressing area, alongside a versatile storage room. Externally, the property boasts an attractive patio frontage and a beautifully presented rear garden providing access to the study. There is a right of way leading to a further lawned garden with a seating area.

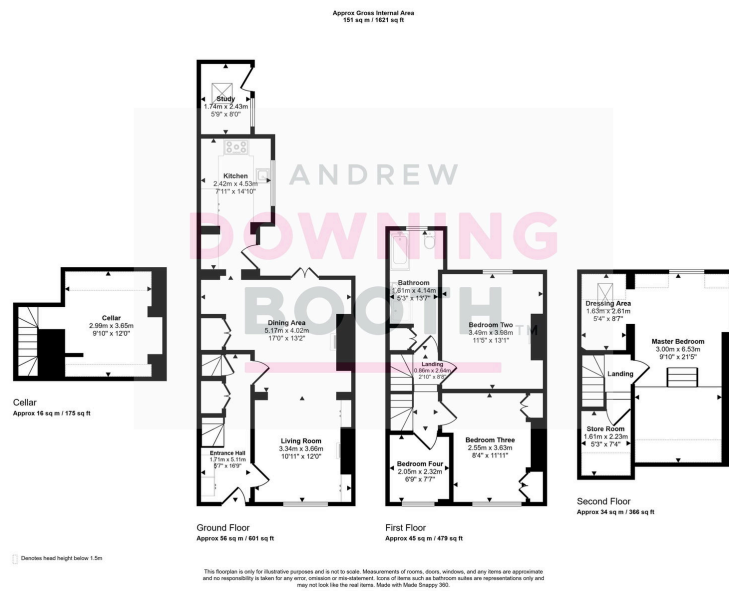
The property is fully gas central heated and an internal viewing is highly recommended to fully appreciate the unique charm, modern finishes, and desirable central location of this inviting home.



ANDREW
DOWNING
BOOTH
ESTATE AGENTS



ANDREW
DOWNING
BOOTH
ESTATE AGENTS



- Four Bedroom Terraced Home
- Beautifully Appointed Throughout
- Four Well Proportioned Bedrooms
- Well-Presented Family Bathroom
- EPC Rating: D
- Great Location Within Walking Distance To Lichfield Centre
- Contemporary Open Plan Living/Dining Room
- Master Bedroom With Dressing Area
- Separate Study Room
- Council Tax Band: D

