



Connells

Seven Acres
Thame

Property Description

A charming semi-detached bungalow set within approximately seven acres in the sought-after market town of Thame. This well-presented home offers comfortable single-storey living, featuring two bedrooms and a family bathroom, making it ideal for a range of buyers.

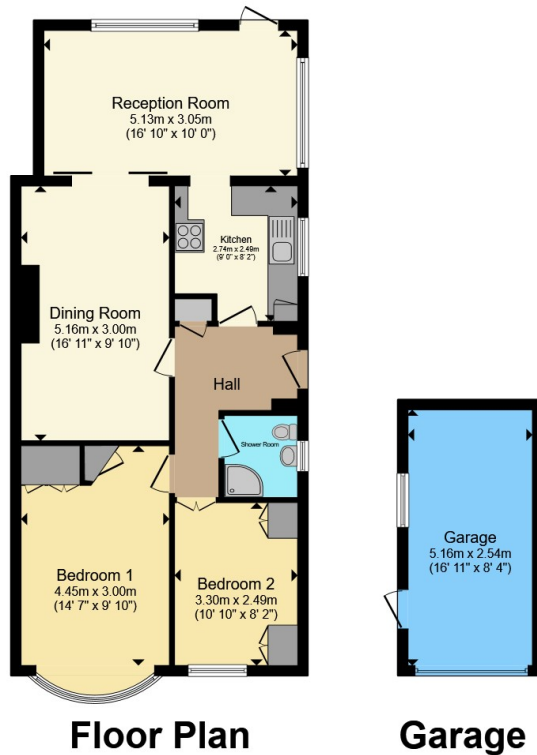
The property benefits from a private driveway and garage, providing ample parking, along with both front and rear gardens that offer attractive outdoor space for relaxation, entertaining, or further landscaping potential.

Thame is a highly desirable location known for its strong sense of community and excellent schooling options, including the well-regarded Lord Williams's School, as well as popular local primaries such as John Hampden and Barley Hill, alongside further choices in nearby villages.

For commuters, the area is well served by the M40, offering links into London and the wider motorway network. Haddenham & Thame Parkway provides rail services into London, while regular bus routes connect Thame with Oxford and surrounding areas.







Total floor area 84.6 m² (910 sq.ft.) approx

This floor plan is for illustrative purposes only. It is not drawn to scale. Any measurements, floor areas (including any total floor area), openings and orientation are approximate. No details are guaranteed, they cannot be relied upon for any purpose and they do not form part of any agreement. No liability is taken for any error, omission or misstatement. A party must rely upon its own inspection(s). Powered by www.propertybox.io



To view this property please contact Connells on

T 01844 260000
E thame@connells.co.uk

103 High Street
THAME OX9 3DZ

EPC Rating: B Council Tax
Band: C

view this property online connells.co.uk/Property/THM307351

Tenure: Freehold



1. MONEY LAUNDERING REGULATIONS Intending purchasers will be asked to produce identification documentation at a later stage and we would ask for your co-operation in order that there will be no delay in agreeing the sale. 2. These particulars do not constitute part or all of an offer or contract. 3. The measurements indicated are supplied for guidance only and as such must be considered incorrect. Potential buyers are advised to recheck measurements before committing to any expense. 4. We have not tested any apparatus, equipment, fixtures, fittings or services and it is in the buyers interest to check the working condition of any appliances.

Connells Residential is registered in England and Wales under company number 1489613, Registered Office is Cumbria House, 16-20 Hockliffe Street, Leighton Buzzard, Bedfordshire, LU7 1GN. VAT Registration Number is 500 2481 05.

See all our properties at www.connells.co.uk | www.rightmove.co.uk | www.zoopla.co.uk

Property Ref: THM307351 - 0002