

Tower Bridge Road, London SE1

Price £1,150 per week - Furnished







Description

A rare opportunity to rent a spacious 3 bedroom apartment in Newhams Yard, SE1, situated close to London Bridge and Tower Bridge, on the doorstep of the City of London.

Offered on a furnished basis, the apartment is situated on 9th floor and comprises 3 bedrooms each with fitted wardrobes, 2 luxury bathrooms, reception with balcony that has stunning south and eastern views towards The Shard, fully fitted kitchen, additional utility room and wood flooring.

Situated at 151 Tower Bridge Road, Newhams Yard is approximately 0.5 miles from London Bridge Station and approximately 0.4 miles from Tower Bridge. The development boasts a 7th floor communal roof terrace and a 12 hour concierge service.

Council tax band: F. Rent is payable on a monthly basis and you may be required to pay more than a month's rent in advance, depending on your circumstances. You will be required to pay a 1 week holding deposit following a successful offer. Tenancies with annual rents up to £50,000 will require a 5 weeks' security deposit, while those exceeding this threshold will require a 6 weeks' deposit. Utility bills, council tax, telephone line and broadband are not included in the rent. As well as paying the rent, you may also be required to make some additional permitted payments. If your tenancy does not qualify as an AST, additional fees may apply. Please visit jll.co.uk/fees for details of fees that may be payable when renting a property. To check broadband and mobile phone coverage please visit Ofcom here ofcom.org.uk/phones-telecoms-and-internet/advice-for-consumers/advice/ofcom-checker

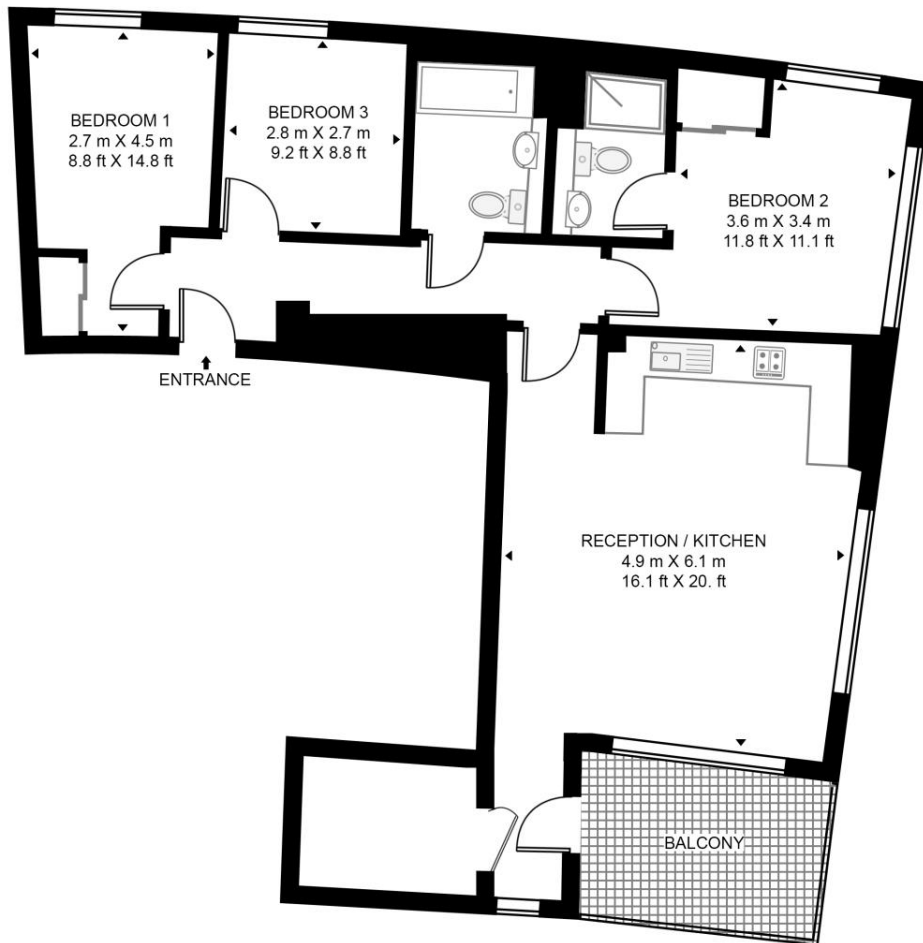
- 3 Bedroom
- 2 Bathroom
- 9th Floor
- Balcony that has stunning views
- On-site concierge
- 0.5 miles from London Bridge Station
- Approx. 949 sq.ft (88.1 sq m)
- Furnished
- EPC: B
- Council tax: Band F

Floorplan

949 sq ft | 88 sq m

NEWHAMS YARD SOUTH

APPROXIMATE GROSS INTERNAL FLOOR AREA 949 SQ.FT (88.2 SQ.M)



NINTH FLOOR

HDVA

This floor plan has been defined by the RICS Code of Measurement. This floor plan and all others are for approximate representative purposes only and upon usage is agreed to as such by the client.

WWW: hdvirtualart.com | TEL: 0203.974.1567 | EMAIL: info@hdvirtualart.com

City
25 Walbrook The Walbrook
Building,
London EC4N 8AF
+4420 7337 4000

Urban living, your way.

jll.co.uk/residential

© 2019 Jones Lang LaSalle IP, Inc. All rights reserved. All information contained herein is from sources deemed reliable; however, no representation or warranty is made to the accuracy thereof.

