

SNELLERS

ESTATE AGENTS



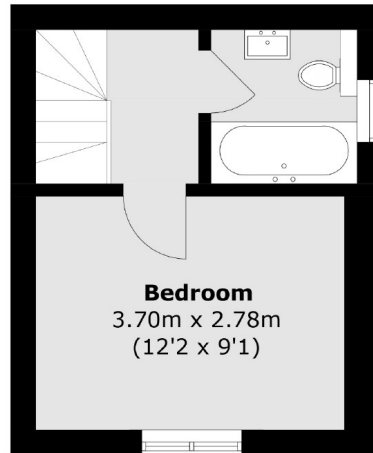
Harvesters Close, TW7

£1,650 PCM

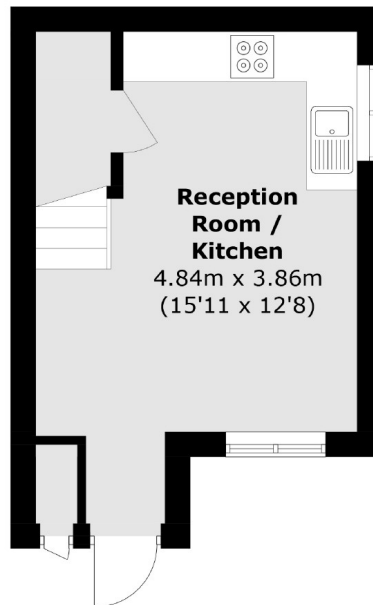
This one bedroom house is presented in excellent condition and is situated within a private cul-de-sac. This house offers an open-plan kitchen/living area, a recently fitted bathroom, a large double bedroom and a private rear garden.

Harvesters Close is located just 0.8 miles to Hounslow station and under one mile to Whitton High Street and station, both with direct trains to London Waterloo. The property also offers great access to the A316, M3 and M25 and some of the area's finest schools.

- One Bedroom House
- Recently Fitted Bathroom
- Modern Interior
- Excellent Condition
- Private Garden
- Integrated Appliances



First Floor



Ground Floor

Total area (approx.): 37.6 sq. m (404.9 sq. ft)
External Storage (approx.): 0.5 sq. m (5.4 sq. ft)

Snellers Twickenham Lettings
64-66 Heath Road
Twickenham
TW1 4BX
020 8892 5678
twickenhamlettings@snellers.co.uk

Energy Rating: D We aim to make our particulars both accurate and reliable. However they are not guaranteed; nor do they form part of an offer or contract. If you require clarification on any points then please contact us, especially if you're traveling some distance to view. Please note that appliances and heating systems have not been tested and therefore no warranties can be given as to their good working order