
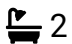



Waterside, West Hyde, Lymm, WA13 0HA

£785,000

 4  2  3



NO ONWARD CHAIN: A truly exceptional four-bedroom semi-detached period home, historically known as the Fustian Cutters Manager's House, occupying a stunning position alongside the Bridgewater Canal close to Lymm village. Extensively refurbished and modernised to an exceptional standard, this bespoke family home seamlessly blends period charm with high-quality contemporary finishes. Highlights included elegant reception rooms with feature fireplaces, a superb principal suite with dressing room, en-suite and private balcony enjoying far-reaching views towards Winter Hill. Externally, the property benefits from driveway parking, landscaped gardens with York stone patios, and an outstanding composite decked seating area positioned directly alongside the canal, creating a truly unique waterside setting. A rare

opportunity to acquire a home of significant local heritage, offering luxurious accommodation in one of Lymm's most desirable locations

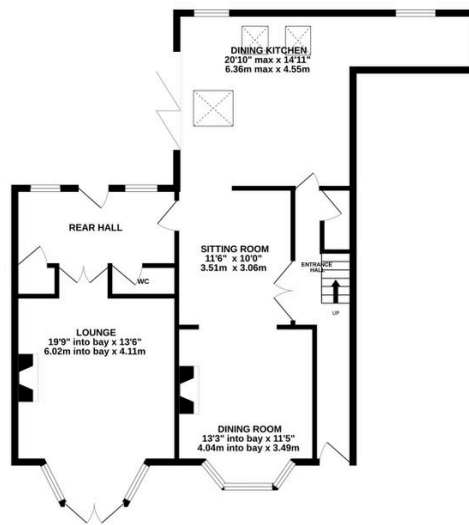
Key Features

- Exceptional four-bedroom period semi-detached home with NO ONWARD CHAIN
- Prime waterside position alongside the Bridgewater Canal
- Three reception areas including lounge, dining room, and snug
- Luxurious principal suite with dressing room, en-suite, and private balcony
- Additional utility kitchen and extensive fitted storage solutions
- Historically recognised as the former Fustian Cutters Manager's House
- Extensively refurbished and modernised to an outstanding standard throughout
- Stylish kitchen diner with granite worktops, central island, and range cooker
- Beautifully landscaped gardens with York stone patios and canal-side decking
- Driveway parking for up to three vehicles

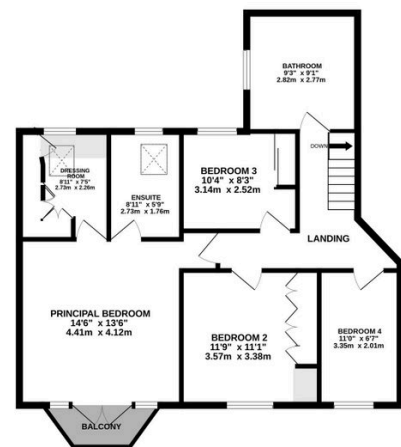
BASEMENT
298 sq.ft. (27.4 sq.m.) approx.



GROUND FLOOR
923 sq.ft. (85.7 sq.m.) approx.



1ST FLOOR
778 sq.ft. (72.3 sq.m.) approx.



TOTAL FLOOR AREA : 1898 sq.ft. (176.4 sq.m.) approx.

Whilst every attempt has been made to ensure the accuracy of the floorplan contained here, measurements of doors, windows, rooms and any other items are approximate and no responsibility is taken for any error, omission or mis-statement. This plan is for illustrative purposes only and should be used as such by any prospective purchaser. The services, systems and appliances shown have not been tested and no guarantee as to their operability or efficiency can be given.
Made with Metropix ©2025