



Connells

Wymering Road
Aylesbury



Property Description

This two-bedroom semi-detached home is offered for sale by the modern method of auction with no onwards chain, presenting an excellent opportunity for buyers seeking space, potential, and a sought-after location in BEDGROVE.

The ground floor comprises an entrance porch leading into a welcoming hallway, which provides access to a conservatory offering additional living space and convenient side access to the garden. A downstairs bathroom fitted with a shower cubicle adds flexibility for modern living. The kitchen is well-equipped with a range of wall and base units, an electric oven, gas hob, and space for white goods. To the front, the bright and airy lounge enjoys a dual aspect, allowing plenty of natural light and featuring an electric fireplace as an attractive focal point.

Upstairs, the property offers two generously sized double bedrooms, with the second bedroom benefitting from access to an ensuite bathroom fitted with a bath. The landing also provides access to the loft.

Externally, the home continues to impress with a large rear garden enjoying a south-westerly aspect, featuring raised decking and a raised patio area—ideal for outdoor entertaining. The garden is bordered by mature shrubs and includes a useful shed for storage. A substantial 21ft garage and

driveway parking further enhance the practicality of the property.

Situated within the ever-popular BEDGROVE area, this home is well placed for local amenities, schools, and transport links.

Entrance Porch

Door to front
Window to side
Carpet underfoot

Entrance Hall

Carpet underfoot
Window to side
Fuse cupboard

Cloakroom

WC
Wash hand basin
Shower cubicle
Window to front

Conservatory

9' 10" x 8' 2" (3.00m x 2.49m)
Door to side

Kitchen

11' 2" x 8' 10" (3.40m x 2.69m)

Window to rear
Wall and base units
Part tiling
Tiling underfoot
Sink/drain
Radiator
Electric oven and gas hob

Slanted ceiling
Extractor fan
Part tiled
WC
Wash hand basin
Bath tub

Lounge

13' 9" x 9' 6" (4.19m x 2.90m)

Window to front and side
Electric fireplace
Radiator
TV Point
Carpet underfoot

Garage

Front Garden

Shingle underfoot
Driveway

Landing

Carpet underfoot
Loft access - insulated not boarded

Rear Garden

Shed and garage
Raised patio to rear
Southwest facing
Shrubs to border
Riased wooden decking

Bedroom One

14' 1" x 9' 6" (4.29m x 2.90m)

Window to front (double glazed)
Cupboard with boiler and water tank
Radiator
Carpet underfoot

Bedroom Two

8' 2" x 7' 10" (2.49m x 2.39m)

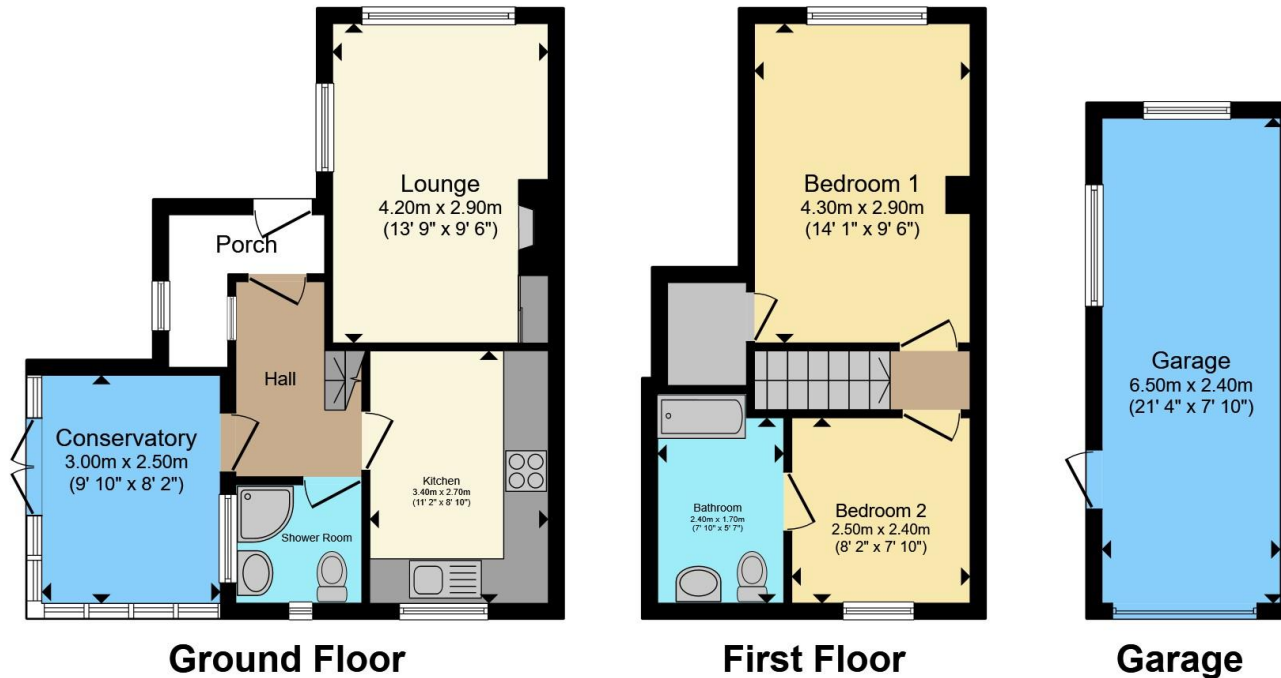
Window to rear (double glazed)
Carpet underfoot
Access to en-suite

En-Suite To Bedroom Two









Total floor area 79.9 m² (861 sq.ft.) approx

This floor plan is for illustrative purposes only. It is not drawn to scale. Any measurements, floor areas (including any total floor area), openings and orientation are approximate. No details are guaranteed, they cannot be relied upon for any purpose and they do not form part of any agreement. No liability is taken for any error, omission or misstatement. A party must rely upon its own inspection(s). Powered by www.propertybox.io



To view this property please contact Connells on

T 01296 395 111
E aylesbury@connells.co.uk

2 Temple Street
 AYLESBURY HP20 2RH

EPC Rating: C Council Tax Band: C

Tenure: Freehold

view this property online connells.co.uk/Property/ALS313151



1. MONEY LAUNDERING REGULATIONS Intending purchasers will be asked to produce identification documentation at a later stage and we would ask for your co-operation in order that there will be no delay in agreeing the sale. 2. These particulars do not constitute part or all of an offer or contract. 3. The measurements indicated are supplied for guidance only and as such must be considered incorrect. Potential buyers are advised to recheck measurements before committing to any expense. 4. We have not tested any apparatus, equipment, fixtures, fittings or services and it is in the buyers interest to check the working condition of any appliances.

Connells Residential is registered in England and Wales under company number 1489613, Registered Office is Cumbria House, 16-20 Hockliffe Street, Leighton Buzzard, Bedfordshire, LU7 1GN. VAT Registration Number is 500 2481 05.

See all our properties at www.connells.co.uk | www.rightmove.co.uk | www.zoopla.co.uk

Property Ref: ALS313151 - 0002