



Burbage Close, SE1

£360,000

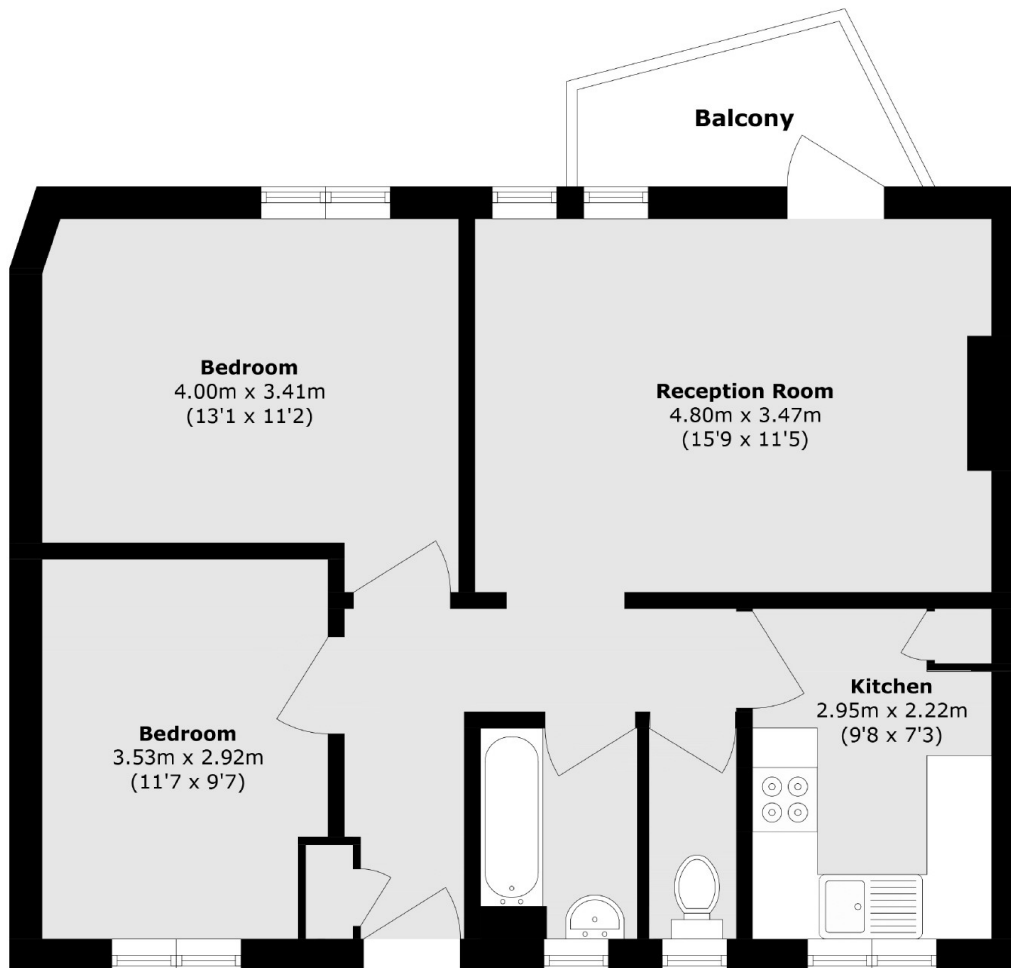
An attractive top-floor flat featuring a spacious living room, separate kitchen, two generously sized double bedrooms, a modern three-piece bathroom, and ample storage. The property also benefits from a private balcony and access to permit parking.

Burbage Close is a peaceful side street tucked just off Great Dover Street, 0.4 miles from Borough Underground station and within walking distance of London Bridge. The world-famous Borough Market, with its artisan food stalls and lively atmosphere, is just beyond, along with an array of cafés, bars, and restaurants.

Features

- Two Double Bedrooms
- Top Floor Flat
- Private Balcony
- Secure Entry
- Permit Parking Available
- Chain Free Sale

Burbage Close, London, SE1



Total area (approx.): 58.9 sq. m (633.9 sq. ft)

Balcony area (approx.): 3.4 sq. m (36.5 sq. ft)