



Bury Place, WC1A

£750,000

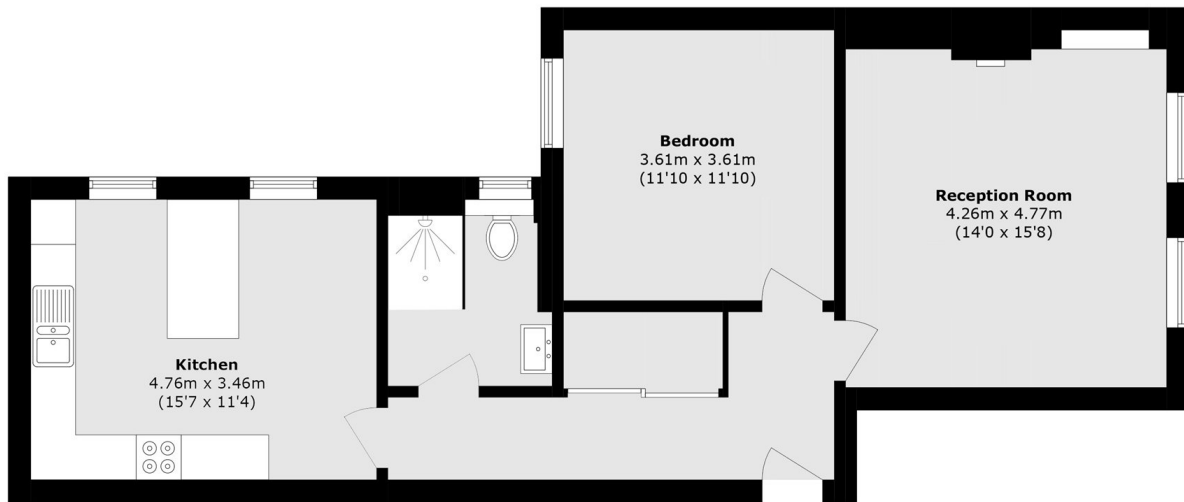
A beautifully presented one double bedroom home located close to the British Museum in Bloomsbury's conservation area. The property has been tastefully updated and includes a feature fireplace, high ceilings and sash windows. There is a separate eat-in kitchen, family bathroom, west facing living room and double bedroom.

Located between Bloomsbury, Holborn, Covent Garden and Soho, the apartment is superbly positioned for both work and leisure. Excellent transport connections are close at hand, with Holborn, Tottenham Court Road, Russell Square and Goodge Street stations all within easy walking distance, alongside renowned universities such as UCL, LSE and SOAS.

Features

- Excellent Condition Throughout
- Separate Eat-In Kitchen
- Central Location
- Top Floor Flat
- Large One Bedroom
- No Onward Chain

Bury Place, London, WC1A



Total area (approx.): 69.3 sq. m (745.9 sq. ft)