

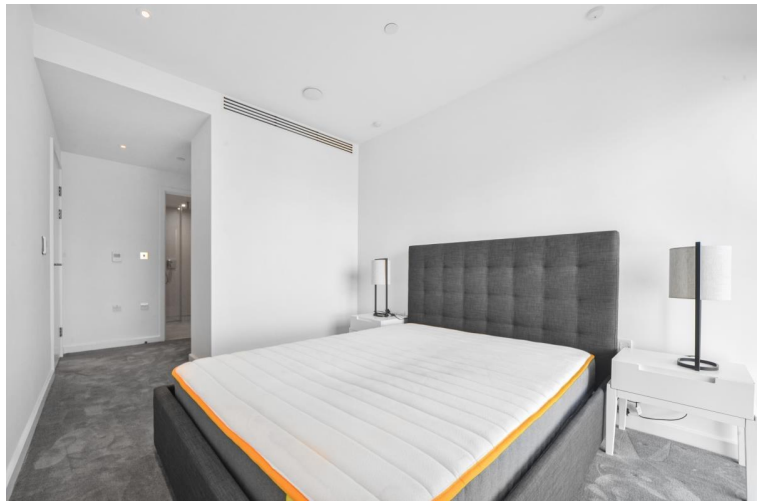
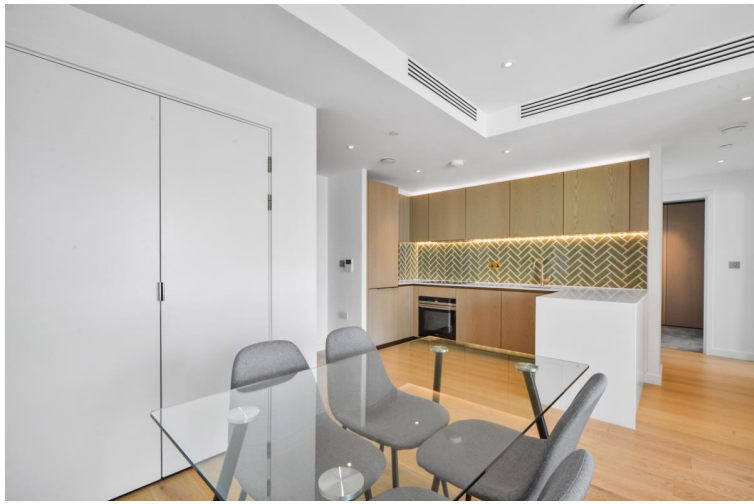


## City Road, London EC1V

Price £880 per week - Furnished







## Description

Perfectly positioned where the City meets Shoreditch, this exceptional two-bedroom apartment in the Atlas Building offers a sophisticated urban living experience. The development is renowned for its outstanding design and world-class amenities, placing residents at the heart of one of London's most dynamic neighbourhoods.

This beautifully furnished apartment enjoys an elevated position, flooding the space with natural light and offering incredible, far-reaching views towards the Olympic Park from a large private balcony. The spacious open-plan reception area integrates a contemporary, fully-fitted kitchen, creating an ideal setting for both relaxing and entertaining. The interior is finished to an exacting standard with wood flooring and comfort cooling and heating throughout.

The accommodation comprises two generous double bedrooms, both featuring large fitted wardrobes that provide ample storage. Two luxury bathrooms are finished with elegant porcelain tiles, adding to the apartment's premium feel. Residents benefit from exclusive access to a comprehensive suite of on-site leisure facilities, including a swimming pool, spa, and cinema room, all managed by a dedicated 24-hour concierge service.

Situated moments from Old Street's 'Silicon Roundabout,' the property offers unparalleled access to the creative hubs of Shoreditch and Clerkenwell, as well as the financial heart of the City. The area is a cultural hotspot, boasting an eclectic mix of independent boutiques, world-class restaurants, and vibrant nightlife. Excellent transport links from Old Street, Angel, and Moorgate stations ensure effortless connectivity across the capital, making this the ideal home for those seeking convenience and an exceptional lifestyle.

Council tax band: F. Rent is payable on a monthly basis and you may be required to pay more than a month's rent in advance, depending on your circumstances. You will be required to pay a 1 week holding deposit following a successful offer. Tenancies with annual rents up to £50,000 will require a 5 weeks' security deposit, while those exceeding this threshold will require a 6 weeks' deposit. Utility bills, council tax, telephone line and broadband are not included in the rent. As well as paying the rent, you may also be required to make some additional permitted payments. If your tenancy does not qualify as an AST, additional fees may apply. Please visit [jll.co.uk/fees](http://jll.co.uk/fees) for details of fees that may be payable when renting a property. To check broadband and mobile phone coverage please visit Ofcom here [ofcom.org.uk/phones-telecoms-and-internet/advice-for-consumers/advice/ofcom-checker](http://ofcom.org.uk/phones-telecoms-and-internet/advice-for-consumers/advice/ofcom-checker)

We understand that cooling / heating is delivered via a communal system for which separate charges apply.

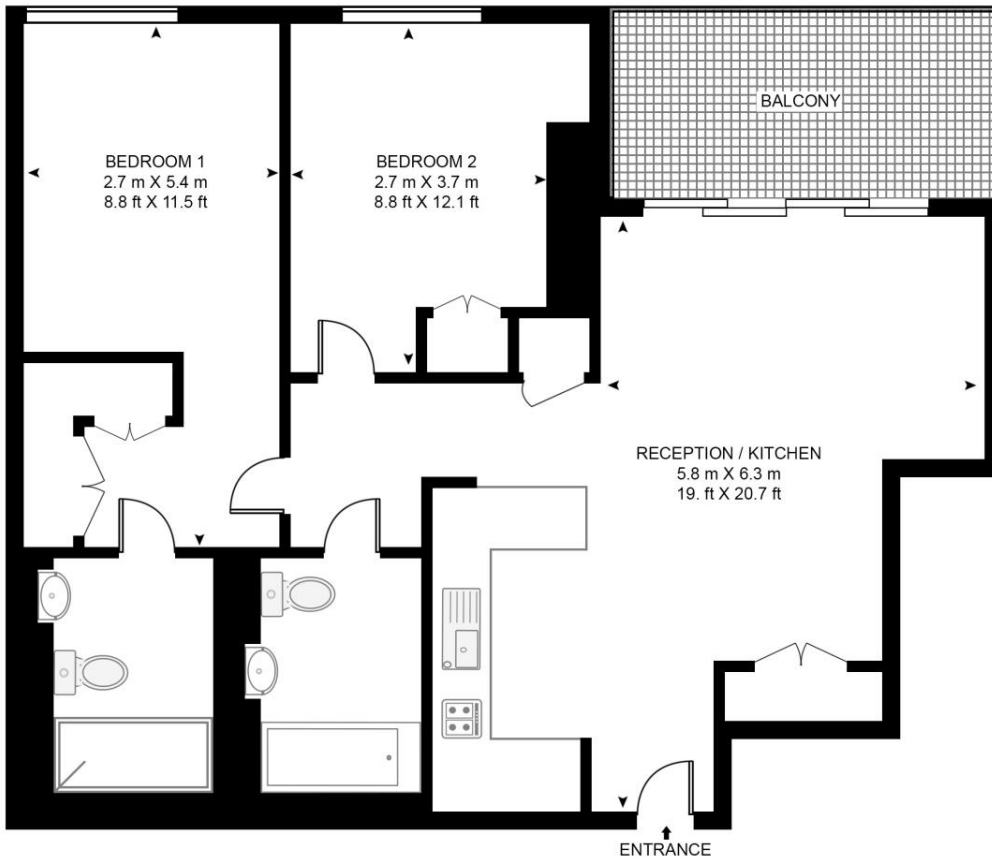
- Luxurious two bedroom apartment
- Elevated city views
- Spacious private balcony
- Residents' pool and spa
- Residents' cinema room
- 24-hour concierge service
- Comfort cooling and heating
- Contemporary fitted kitchen
- Ample fitted storage
- Furnished to high standard

# Floorplan

773 sq ft | 72 sq m

## ATLAS BUILDING

APPROXIMATE GROSS INTERNAL FLOOR AREA 773 SQ.FT (71.8 SQ.M)



## NINETEENTH FLOOR



This floor plan has been defined by the RICS Code of Measurement. This floor plan and all others are for approximate representative purposes only and upon usage is agreed to as such by the client.  
WWW: [hdvirtualart.com](http://hdvirtualart.com) | TEL: 0203.974.1567 | EMAIL: [info@hdvirtualart.com](mailto:info@hdvirtualart.com)

City  
25 Walbrook The Walbrook  
Building,  
London EC4N 8AF  
+4420 7337 4000

*Urban living, your way.*

[jll.co.uk/residential](http://jll.co.uk/residential)

© 2019 Jones Lang LaSalle IP, Inc. All rights reserved. All information contained herein is from sources deemed reliable; however, no representation or warranty is made to the accuracy thereof.

