



Garfield Road, SW11  
£500,000

**Dexters**



## Garfield Road, SW11

A spacious, ground floor period conversion presented in excellent order throughout. Arranged to include a reception room, eat-in kitchen, double bedroom, family bathroom and private garden. The property benefits from extension potential into the side return (STPP), has additional storage in the garden, has it's own private entrance and has a share of the freehold.

You enter into the reception room at the front of the property, a comfortable living space ideal for relaxing or entertaining. Moving through, the layout opens into a kitchen and dining area positioned at the heart of the home, providing a practical and sociable everyday space. Beyond this, the double bedroom sits quietly to the rear, with a bathroom conveniently located just off the hallway. The property also benefits from access out to the private garden and a separate external storage area, adding valuable additional space and flexibility to the layout.

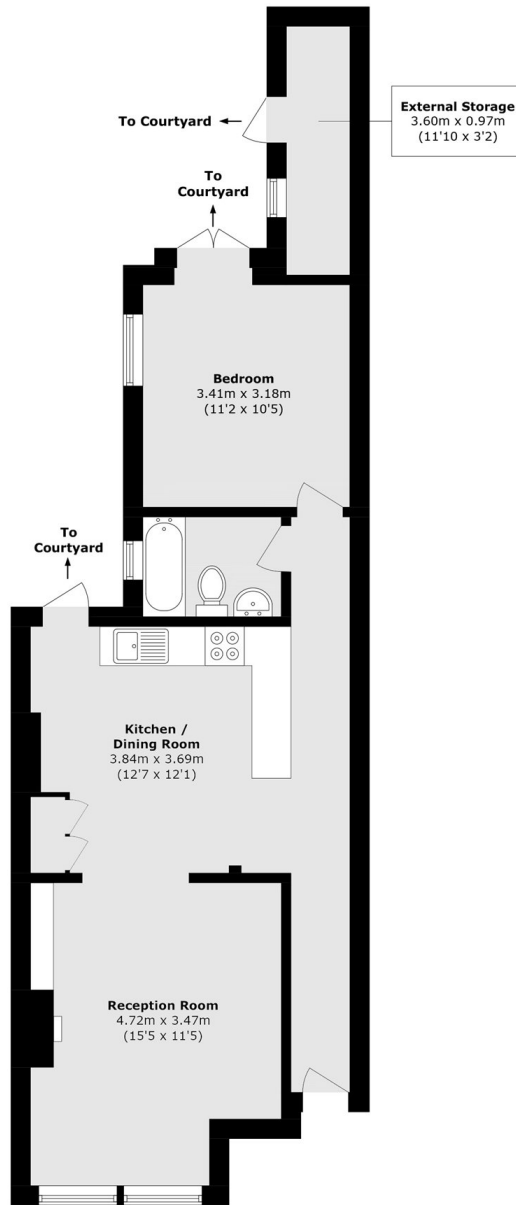
Garfield Road is a sought after residential street just a short walk away from Clapham Common. Close by an array of bars, restaurants and cafés. Transport links can be found at Clapham Common and Clapham Junction.

### Features

- Double Bedroom
- Family Bathroom
- Private Garden
- Extension Potential (STPP)
- Own Front Door
- Share Of The Freehold



Garfield Road,  
London, SW11



Total area (approx.): 55.5 sq. m (597.4 sq. ft)  
External storage area (approx.): 3.7 sq. m (39.8 sq. ft)