

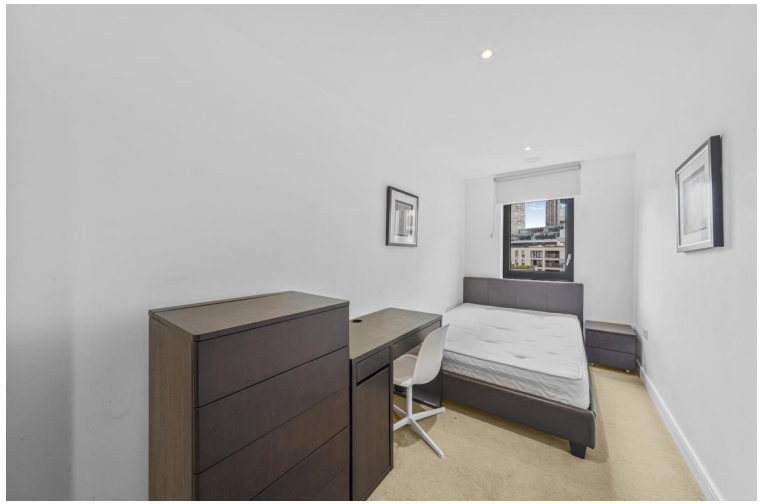
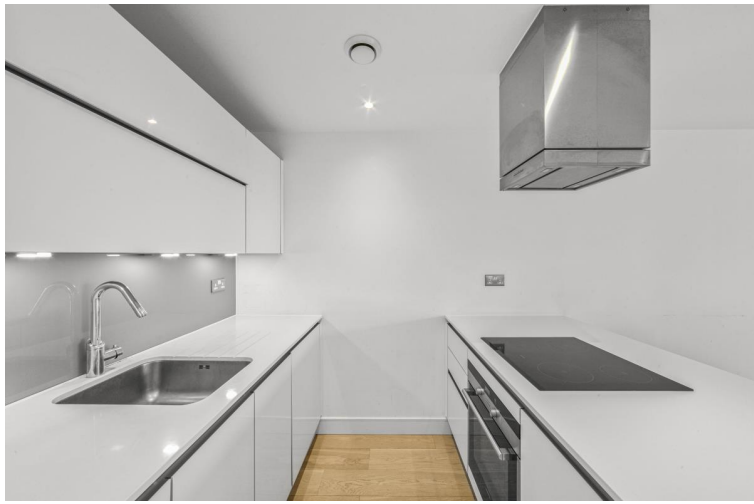


## Commercial Street, London E1

Price £1,025 per week - Furnished







## Description

A rarely available 3 bedroom apartment in the brand new Cityscape development, conveniently located from Aldgate and Aldgate East tube station and short walking distance to the City of London

This spacious luxury 3 bedroom apartment is situated on the 4th floor and offers approximately 974 sq.ft. of living space. The property comprises 3 double bedrooms with en-suite and large fitted wardrobes to master, living and dining area with fully fitted open plan kitchen, generous sized balcony looking into the landscaped gardens, contemporary bathrooms with porcelain and glass tiling and wooden flooring. The apartment benefits from floor to ceiling windows maximising natural light and views.

The development is situated next Aldgate East Station and a short walk from the City of London. Residents also benefit from 24 hour concierge service, on site gymnasium and communal roof terrace with stunning panoramic views of the City Skyline and Canary Wharf.

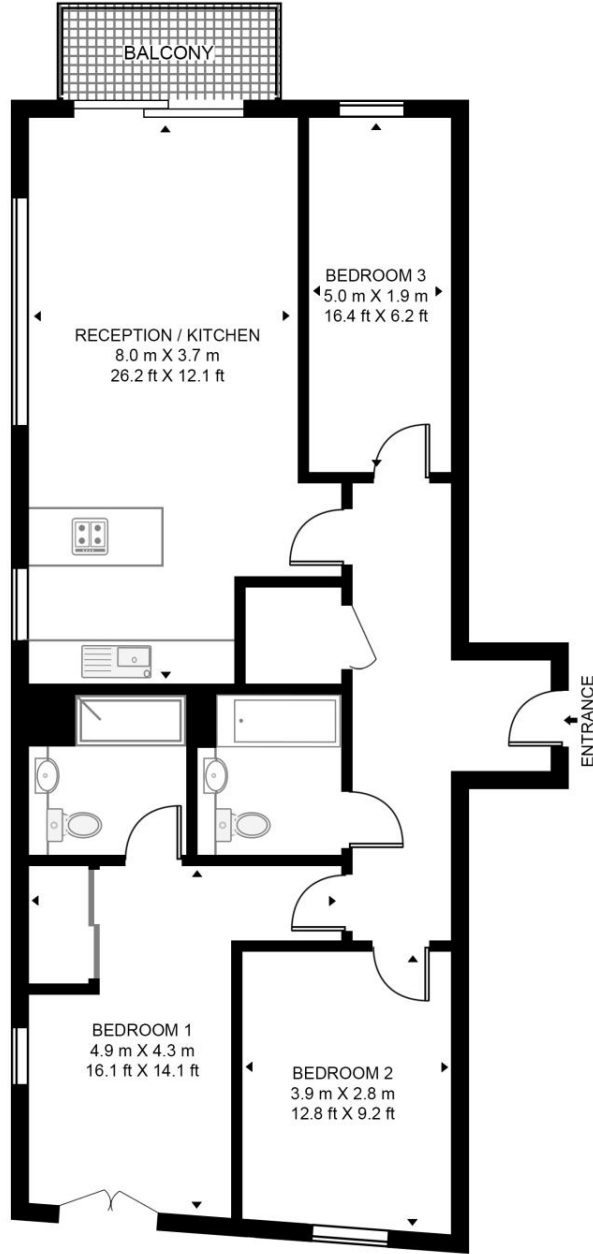
Council tax band: G. Rent is payable on a monthly basis, and you may be required to pay more than a month's rent in advance for tenancies with annual rents exceeding £100,000. You will be required to pay a 1 week holding deposit following a successful offer. Tenancies with annual rents up to £50,000 will require a 5 weeks' security deposit, while those exceeding this threshold will require a 6 weeks' deposit. Utility bills, council tax, telephone line and broadband are not included in the rent. As well as paying the rent, you may also be required to make some additional permitted payments. If your tenancy does not qualify as an APT, additional fees may apply. Please visit [jll.co.uk/fees](http://jll.co.uk/fees) for details of fees that may be payable when renting a property. To check broadband and mobile phone coverage please visit Ofcom here [ofcom.org.uk/phones-telecoms-and-internet/advice-for-consumers/advice/ofcom-checker](http://ofcom.org.uk/phones-telecoms-and-internet/advice-for-consumers/advice/ofcom-checker)

- 3 Bedrooms
- 2 Bathrooms
- Balcony
- Open plan kitchen
- On site leisure facilities
- Communal roof gardens
- 0.1 miles from Aldgate Station
- Approx. 974 sq ft (90.5 sq m)
- EPC: B
- Council tax: Band G

# Floorplan

974 sq ft | 91 sq m

**KENSINGTON APARTMENTS, COMMERCIAL ROAD**  
APPROXIMATE GROSS INTERNAL FLOOR AREA 974 SQ.FT (90.5 SQ.M)



FOURTH FLOOR



This floor plan has been defined by the RICS Code of Measurement. This floor plan and all others are for approximate representative purposes only and upon usage is agreed to as such by the client.  
WWW: [hdvirtualart.com](http://hdvirtualart.com) | TEL: 0203.974.1567 | EMAIL: [info@hdvirtualart.com](mailto:info@hdvirtualart.com)

City  
25 Walbrook The Walbrook  
Building,  
London EC4N 8AF  
+4420 7337 4000

*Urban living, your way.*

[jll.co.uk/residential](http://jll.co.uk/residential)

© 2019 Jones Lang LaSalle IP, Inc. All rights reserved. All information contained herein is from sources deemed reliable; however, no representation or warranty is made to the accuracy thereof.

