



Lombardy Place | | London | W2 4AU

£12,000 Per month

ESON 2
REAL ESTATE

Key features

- Four double bedrooms
- Expansive reception room
- Central location
- Personal study
- Private patio

Description

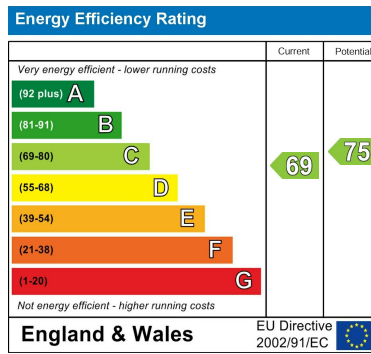
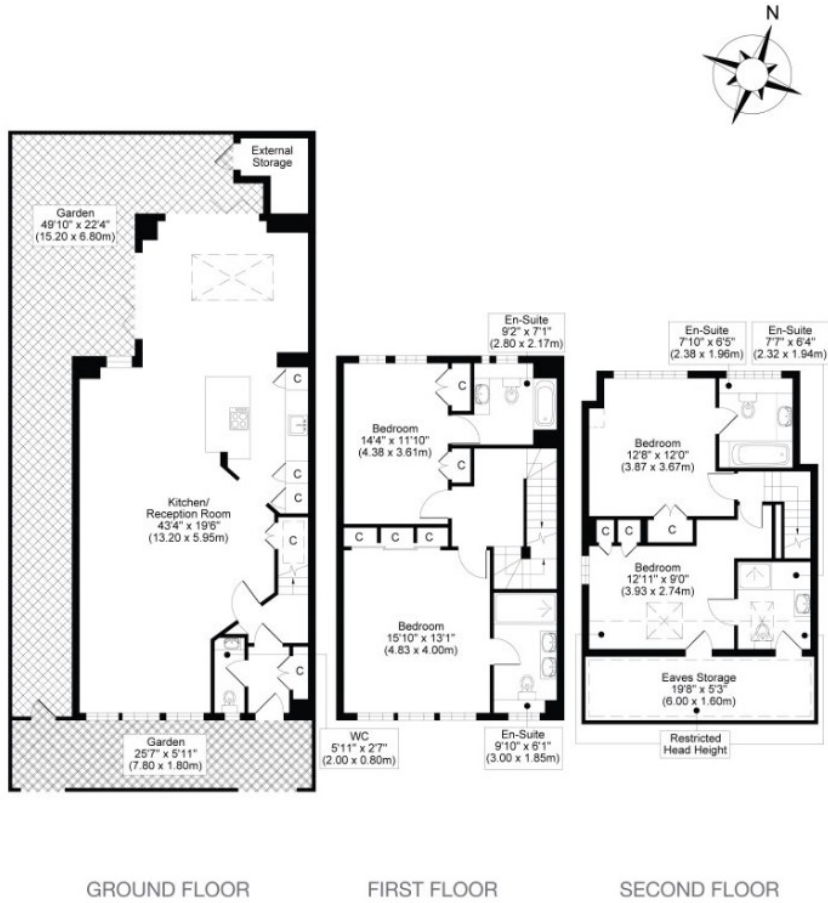
A four-bedroom detached residence of genuine character, extending to 1,937 sq ft in one of London's most sought-after settings. Generous, light-filled reception space flows through a thoughtfully arranged interior, complemented by four well-appointed bathrooms and a quality of finish that speaks for itself. Perfectly positioned for the capital at its best.

Directions





Floor plans



Council Tax Band D EPC Rating C



301 Michelin House 81 Fulham road
 London
 Greater London
 SW3 6RD
 07920 257649
 fayeel@eson2.co.uk
 www.eson2.co.uk