

Newton Road, TW7

£2,375 Per calendar month

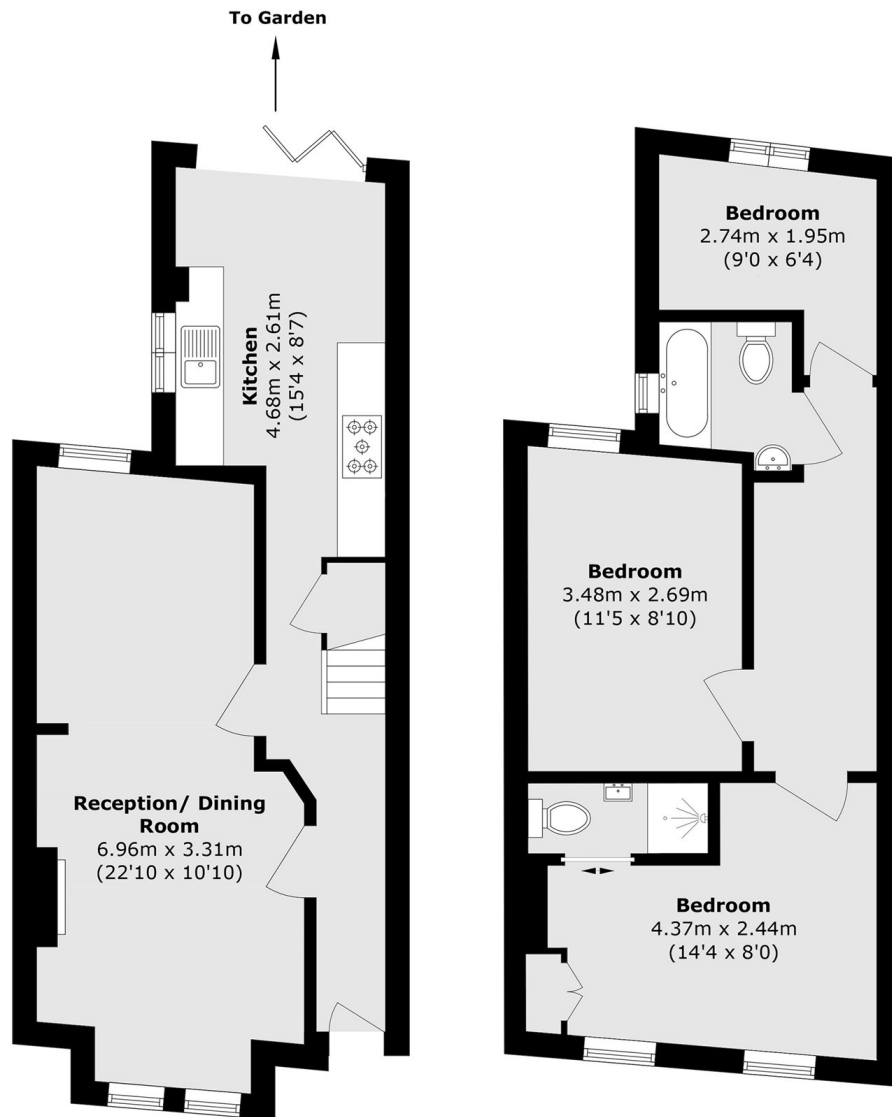
An immaculately decorated three double bedroom mid terraced family home with double reception room, separate kitchen and private garden.

Newton Road is around the corner from the Isleworth Train Station as well as walkable distance to all local cafes, restaurants and St. Johns Gardens.

Features

- Three Double Bedrooms
- Large Reception Room
- Modern Bathrooms
- Separate Kitchen
- Private Garden
- Central Location

Newton Road, Isleworth, TW7



Ground Floor

First Floor

Total area (approx.): 83.8 sq. m (902.0 sq. ft)