



Harleyford Road, SE11

£550,000

A beautiful split level two bedroom home in excellent condition throughout. Split over the top two floors this well proportioned home has a separate shaker style kitchen, fantastic reception space, two bedrooms and a share of the freehold.

Located just moments from everything Vauxhall has to offer. Simply fabulous transport links including Vauxhall mainline and tube stations are within a short walk. Many bus services and good schools are close by.

Features

- Share of Freehold
- Two Bedrooms
- Excellent Condition
- Split Level
- Central Location
- Great Storage



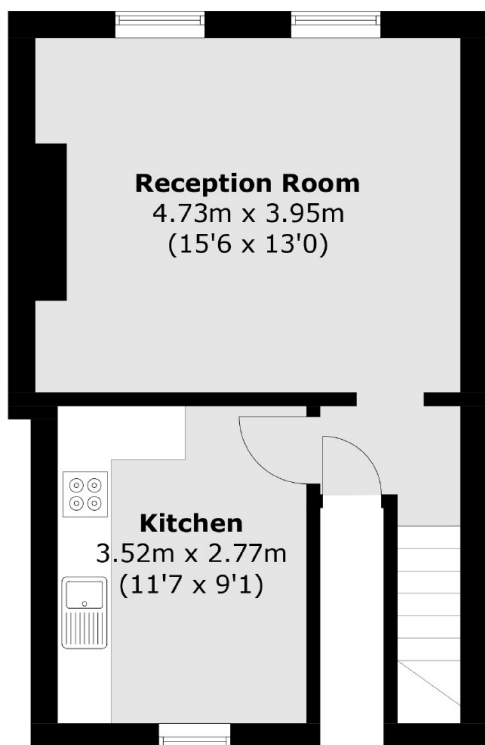
Harleyford Road, SE11

The gorgeous first floor has a timeless shaker style kitchen that is perfect for those who love to cook and entertain. Complete with fitted appliances, lots of preparation space and even space for dining. To the front is a south facing living room which has space for both living and dining areas, high ceilings, wooden floors and of course it is flooded with natural light.

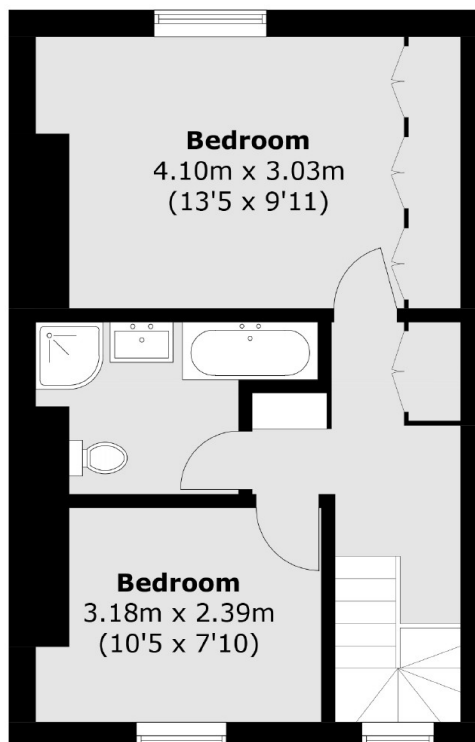
The first floor has a large double bedroom to the front, benefitting from wall to wall built in bespoke wardrobes. Furthermore this share of freehold home has a second bedroom and a family bathroom benefitting from a separate tub and shower. This property has been well finished throughout, leaving the next buyer able to simply move in.



Harleyford Road, London, SE11



First Floor



Second Floor

Total area (approx.): 68.7 sq. m (739.5 sq. ft)