



WARREN AVENUE
RICHMOND

JACKSON-STOPS 

WARREN AVENUE RICHMOND, TW10

ASKING PRICE: £3,250 PCM

An excellent three double bedroom family house situated just 0.35 miles from both Sheen Mount Primary and Holy Trinity CoE Schools. Benefitting from two reception rooms, private garden, kitchen and separate WC.

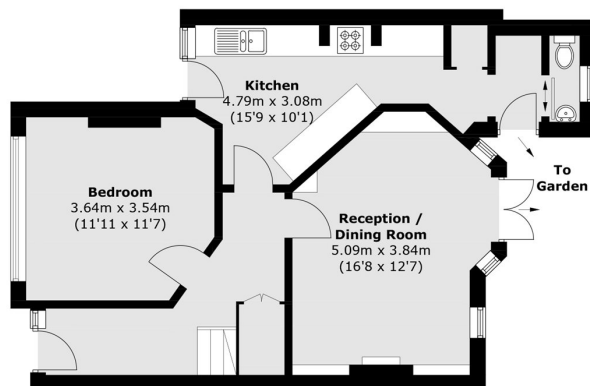
Situated between North Sheen and Mortlake in Richmond upon Thames. The area is renowned for its outstanding schools and excellent transport links by rail or road, to and from London.



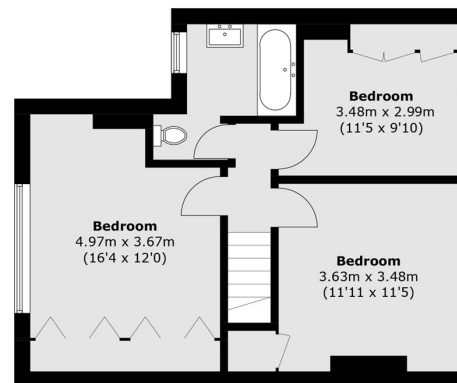
KEY FEATURES

- Close to Schools
- Three Double Bedrooms
- Private Garden
- Downstairs WC
- Modern Bathroom
- Two Reception Rooms





Ground Floor



First Floor

Total area (approx.): 106.8 sq. m (1,149.6 sq. ft)

Energy Rating: E. We aim to make our particulars both accurate and reliable. However they are not guaranteed; nor do they form part of an offer or contract. If you require clarification on any points then please contact us, especially if you are travelling some distance to view. Please note that appliances and heating systems have not been tested and therefore no warranties can be given as to their good working order.

ASKING PRICE: £3,250 PCM

TEDDINGTON

020 8943 9955

teddingtonlettings@jackson-stops.com

jackson-stops.co.uk

JACKSON-STOPS 