



Connells

Walnut Tree Court Pitts Close
Stoke Mandeville Aylesbury

Walnut Tree Court Pitts Close Stoke Mandeville Aylesbury HP22 5BN

for sale offers over
£225,000



Property Description

Discover refined village living in this beautifully presented one-bedroom residence with a loft room, perfectly positioned in the desirable heart of Stoke Mandeville. Offering an elevated blend of style, comfort, and versatility, this home is an outstanding choice for first-time buyers, downsizers or investors looking for a standout property.

Upon entering, you are greeted by a spacious and elegantly bright living room, enhanced by a large front-aspect window that bathes the space in natural light, creating a warm ambience. The beautifully finished kitchen lies to the rear, showcasing marble worktops, quality tiled flooring, contemporary cabinetry, an integrated fridge/freezer, and modern electric cooking appliances.

The first floor hosts a double bedroom with plush carpeting and a front-facing outlook. A sleek, contemporary bathroom features a full-sized bath with an overhead shower. A set of stairs leads to the loft room, providing a versatile, refined space - perfect as an inspiring home office or creative studio.

Outside, the property continues to impress with a private front driveway, manicured lawn, patio area, and smart post fencing.

Stoke Mandeville offers an exclusive village lifestyle just 2 miles from Aylesbury, with superb local amenities including three popular pubs, a Post Office/shop, the historic St Mary's Church, and a mainline station with direct links to London Marylebone.

Lounge

11' 2" MAX x 16' 1" MAX (3.40m MAX x 4.90m MAX)

Door to front

Window to front

Laminate underfoot

Radiator

Kitchen

5' 1" max x 10' 9" max (1.55m max x 3.28m max)

Window to side

Tiling underfoot

Wall and base units

Electric hob and oven

Integrated fridge freezer

Marble counter tops

Bedroom One

16' 6" max x 10' 8" max (5.03m max x 3.25m max)

Window to front

Carpet underfoot

Radiator

Stairs to loft room

Bathroom

Window to front

Part tiling

WC

Washhand basin

Bath/mixer with shower

Airing cupboard

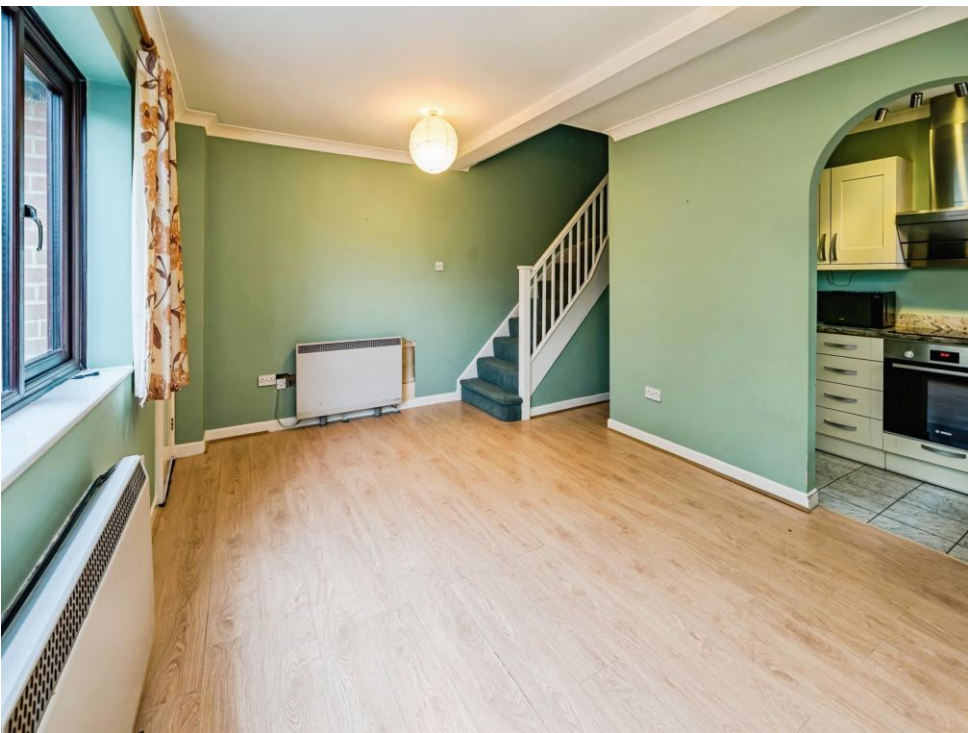
Loft Room

12' 11" max x 11' 11" max (3.94m max x 3.63m max)

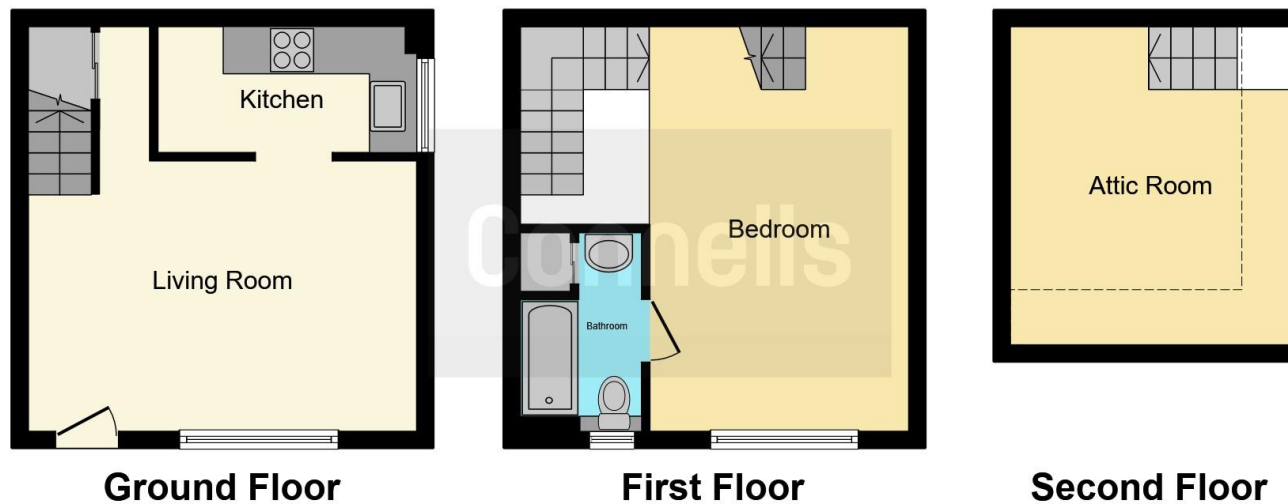
Skylight window to front

Carpet underfoot









This floor plan is for illustrative purposes only. It is not drawn to scale. Any measurements, floor areas (including any total floor area), openings and orientation are approximate. No details are guaranteed, they cannot be relied upon for any purpose and they do not form part of any agreement. No liability is taken for any error, omission or misstatement. A party must rely upon its own inspection(s). Powered by www.focalagent.com

To view this property please contact Connells on

T 01296 395 111
E aylesbury@connells.co.uk

2 Temple Street
 AYLESBURY HP20 2RH

EPC Rating: D Council Tax
 Band: C

Tenure: Freehold

view this property online connells.co.uk/Property/ALS312546



1. MONEY LAUNDERING REGULATIONS Intending purchasers will be asked to produce identification documentation at a later stage and we would ask for your co-operation in order that there will be no delay in agreeing the sale. 2. These particulars do not constitute part or all of an offer or contract. 3. The measurements indicated are supplied for guidance only and as such must be considered incorrect. Potential buyers are advised to recheck measurements before committing to any expense. 4. We have not tested any apparatus, equipment, fixtures, fittings or services and it is in the buyers interest to check the working condition of any appliances.

Connells Residential is registered in England and Wales under company number 1489613, Registered Office is Cumbria House, 16-20 Hockliffe Street, Leighton Buzzard, Bedfordshire, LU7 1GN. VAT Registration Number is 500 2481 05.

See all our properties at www.connells.co.uk | www.rightmove.co.uk | www.zoopla.co.uk

Property Ref: ALS312546 - 0005