

No. 4 Village Centre, £249,950*

(Other charges apply)

**RICHMOND
VILLAGES**

Part of Bupa



1



1



EPC - C



1 bedroom first floor apartment

A generous one bedroom, first floor assisted living apartment offering expansive views across the bowling green at Richmond Villages Nantwich. The property is perfectly conveniently situated within easy reach of our lovely on-site facilities, including the restaurant, relaxing lounges, hair salon, therapy rooms, bowling green, and landscaped gardens.

Specification

- An open hallway that provides access to all rooms and includes convenient storage.
- The bright welcoming East Facing living/dining room is well-proportioned, offering plenty of space to entertain family or friends, benefiting from French doors with its own balcony, with stunning views across the bowling green.
- The well perfectly sized fitted kitchen includes wall and base units, a stainless-steel sink and drainer, and fridge.
- The principal bedroom is a light comfortable space with ample storage provided by fitted wardrobes.
- A beautifully modern tiled shower room featuring a WC and washbasin set within a fully fitted vanity unit, complemented by a heated towel rail and ceiling downlights.
- Central heating radiators in all rooms. TV and satellite points*.
- Well stocked flower borders and lawns maintained by the Village Gardeners.
- Allocated parking space for one resident car owner.

*Satellite subscription not included.

Important Notice: These particulars are intended to give a fair and substantially correct overall description. Other fees and charges apply, please contact the Village Advisers for further details. Properties are sold on a 125 year lease and this property has 106 years remaining. CGI images are used and are not representative of the property for sale.



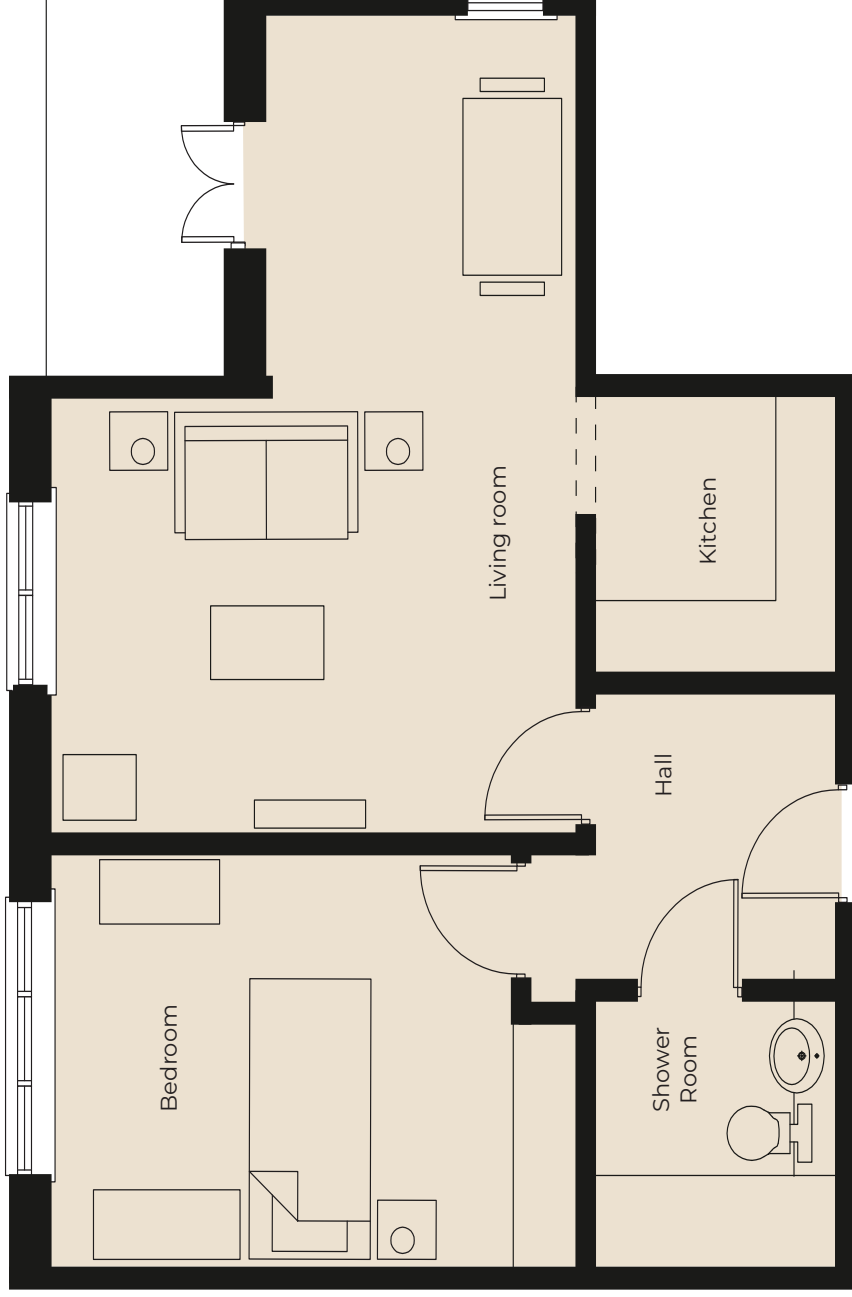
01270 629 080

nantwich@richmond-villages.com

Richmond Villages Nantwich,
St Joseph's Way, Nantwich, Cheshire CW5 6LZ

No. 4 Village Centre

First Floor | 592 ft²



- Kitchen**
1981mm x 1981mm
6'6" x 6'6"
- Living Room**
6299mm x 5080mm
20'8" x 16'8"
- Bedroom**
4775mm x 3149mm
15'8" x 10'4"
- Shower Room**
2184mm x 1981mm
7'2" x 6'6"

These particulars are intended to give a fair and substantially correct overall description.

Measurements have been taken at 1500mm skeliling height.

All dimensions are approximate. Bedroom measurements include the wardrobe if applicable. Room measurements include bay windows if applicable.

Furniture layout is to give an indicative impression. Although all efforts have been made to ensure its accuracy at time of print dimensions, fixtures, fittings, finishes and specifications are subject to change without notice.

The properties are sold unfurnished.

