



Mapleton Crescent, SW18

£2,100 Per calendar month

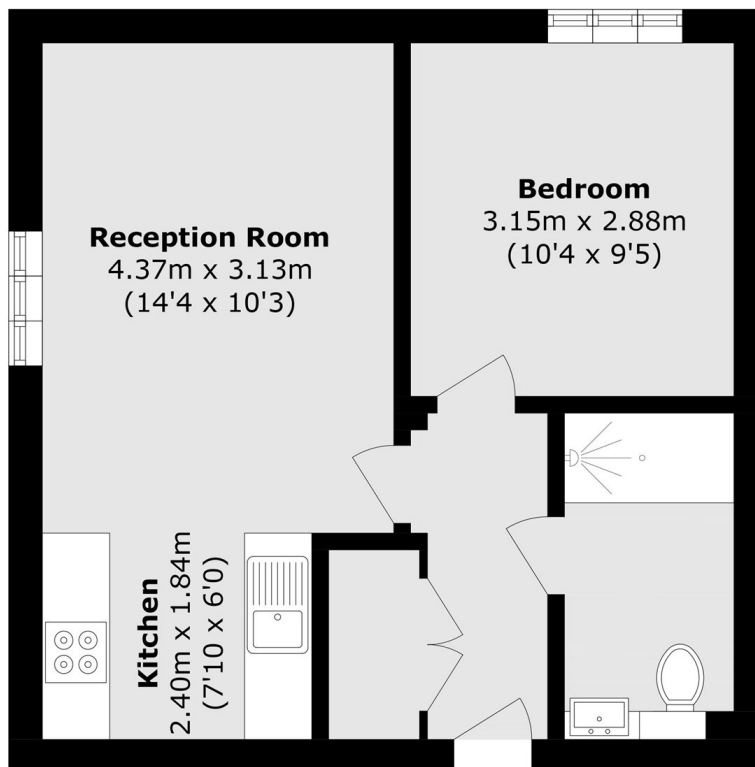
Well presented one bedroom apartment on the 10th floor of sought after Mapleton Crescent. Features open plan living, modern integrated kitchen, and access to a communal roof terrace, resident lounge, and bike storage.

Located in the heart of Wandsworth, Mapleton Crescent is close to a wide range of shops, restaurants, and bars, with the beautiful King George's Park just moments away.

Features

- One Bedroom Apartment
- Open Plan Reception
- Integrated Kitchen
- Modern Bathroom Suite
- Resident's Lounge
- Communal Gardens

Mapleton Crescent, London, SW18



Total area (approx.): 38.2 sq. m (411.1 sq. ft)