

Kings Lodge

Ruislip • Middlesex • HA4 8NH

PCM: £1,750 PCM



coopers
est 1986



PERFECT for the commuter, Coopers are pleased to offer to the market this IDEALLY located TWO BEDROOM two bathroom apartment, set in one of the area's MOST SOUGHT after blocks - Kings Lodge. Situated next to Ruislip High Street and Station, this SUPERB property briefly comprises: entrance hall with large storage cupboard, SPACIOUS lounge with electric fireplace, fitted kitchen, two double bedrooms (en suite to master) and MODERN family bathroom. Other benefits include entry phone system, gated allocated parking, concierge service, communal roof terrace and residents only GYMNASIUM.

One of Ruislip's finest developments

Gymnasium

Concierge Service

Gated allocated parking

Ensuite

Two double bedrooms

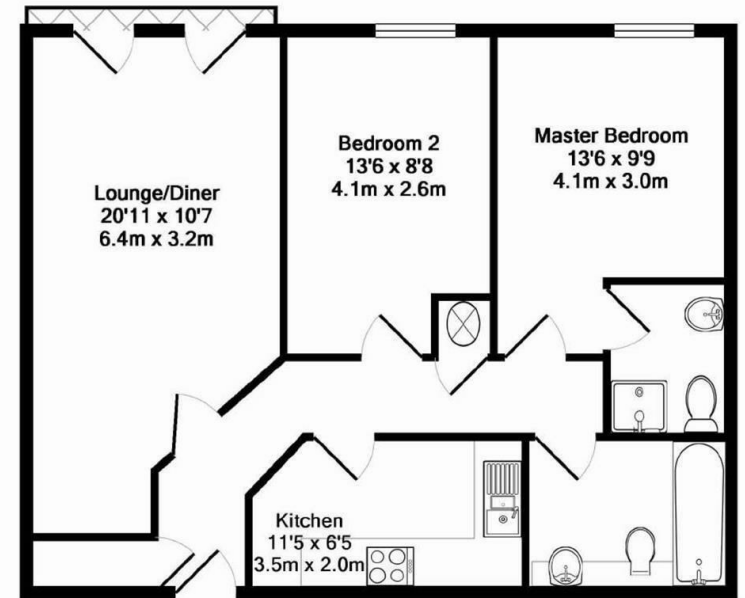
Striking distance to Ruislip Station

Situated next to Ruislip High Street

Unfurnished

Available Date

22nd December 2025



TOTAL APPROX. FLOOR AREA 62.6 SQ.M. (674 SQ.FT.)

Whilst every attempt has been made to ensure the accuracy of the floor plan contained here, measurements of doors, windows, rooms and any other items are approximate and no responsibility is taken for any error, omission, or mis-statement. This plan is for illustrative purposes only and should be used as such by any prospective purchaser. The services, systems and appliances shown have not been tested and no guarantee as to their operability or efficiency can be given
Made with Metropix ©2010



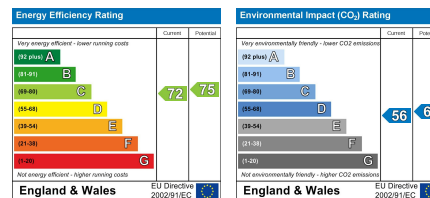
coopers
est 1986

01895 625 625

**126-128 High Street, Ruislip,
Middlesex, HA4 8LL**

rl@coopersresidential.co.uk

CoopersResidential.co.uk



Important Notice: These particulars, whilst believed to be accurate are set out as a general outline only for guidance and do not constitute any part of an offer or contract. Intending purchasers should not rely on them as statements or representation of fact, but must satisfy themselves by inspection or otherwise has the authority to make or give any representation or warranty in respect of the property.