



## Leathermarket Court, SE1 £625,000

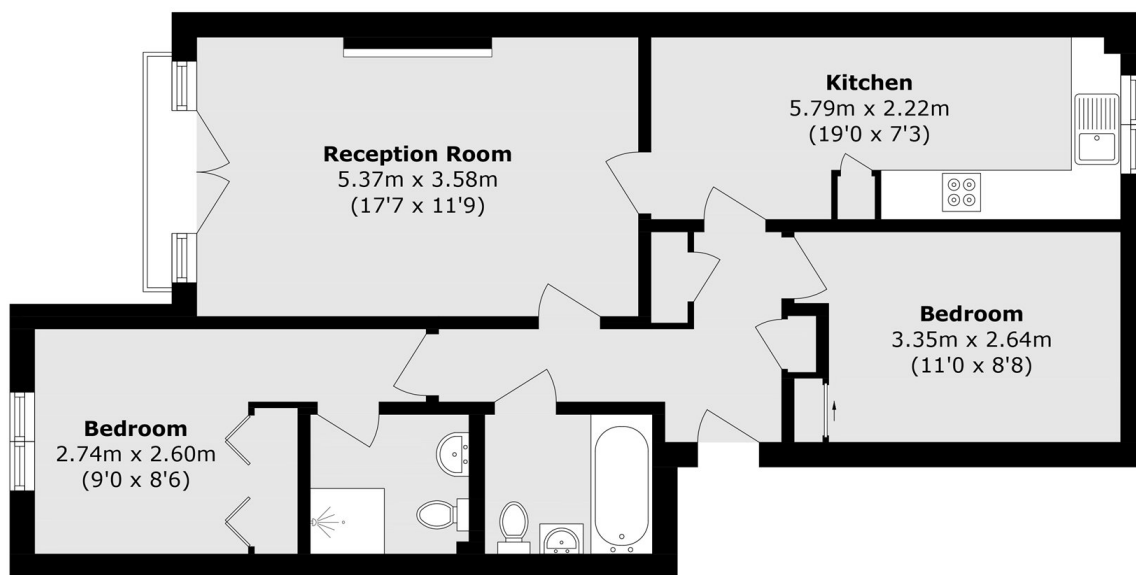
An exceptionally attractive west-facing flat with delightful views over beautifully landscaped communal gardens. This bright and well-appointed home offers a spacious reception room, a separate eat-in kitchen, two generous double bedrooms, two bathrooms, and excellent storage throughout. Further benefits include secure off-street parking and a peaceful, sought-after setting.

Leathermarket Court is set in the heart of SE1, next to the beautiful Leathermarket Rose Gardens, a stone's throw from the vibrant Bermondsey Street. London Bridge station, Borough Market, Bankside and Shad Thames are all moments away.

### Features

- Gated Development
- Secure Off-Street Parking
- Beautiful Communal Gardens
- Two Double Bedrooms
- Two Bathrooms
- Large Eat-in Kitchen
- Chain Free Sale

# Leathermarket Court, London, SE1



## Third Floor

Total area (approx.): 68.3 sq. m (735.2 sq. ft)