



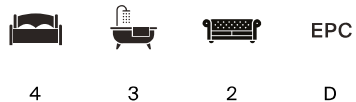
WILLOW COTTAGE

Brome Hall Lane, Lapworth, Solihull, Warwickshire



A BEAUTIFUL COTTAGE IN THE MOST SECLUDED OF LOCATIONS WITH EXTENSIVE GARDENS OFFERING ABSOLUTE PRIVACY.

Nestled within a delightful, secluded setting, Willow Cottage offers the rare combination of rural tranquillity and village convenience – making it the perfect retreat for families seeking space, character, and lifestyle.



Services: Mains water, electricity and mains drainage. Oil fired central heating

What3Words: ///behalf.rosette.spearhead

Tenure: Freehold

Local Authority: Warwick District Council

Council Tax Band: E

Viewing: By prior appointment only with the agents

SITUATION

Willow Cottage is situated in a beautiful location close to all of the amenities Lapworth, Dorridge and Knowle have to offer. The property is within easy reach of the intersections with the M40 and M42, giving good access on to the Midlands motorway network and the NEC, Birmingham International Airport and the M40 to Oxford and London beyond. Solihull, Henley in Arden, Warwick and Stratford-upon-Avon are all readily accessible.

There is an excellent range of state, grammar and private schools nearby, including the renowned Solihull boys and girls schools and King Edward the VIII school in Birmingham. Public Schools in Warwick, The Croft Prep School in Stratford-upon-Avon, Stratford Grammar School, Arnold Lodge Prep School and Kingsley School for Girls in Leamington Spa.

There are a number of excellent golf courses nearby, including the Copt Heath Golf Club in Knowle, and The Belfry Hotel is 15 miles away.

M42 (J4) 8 miles

M40 (J15) 10 miles

Birmingham International Airport 11 miles

Warwick 11 miles

Birmingham City centre 12 miles

Stratford-upon-Avon 12 miles

(distances approximate)





WILLOW COTTAGE

Tucked away in a peaceful and private location, yet just a short walk from the heart of the village and all its amenities, Willow Cottage is a superb and characterful family home offering both charm and convenience in equal measure.

This beautifully presented property welcomes you with a spacious entrance hall that sets the tone for the warm and inviting interiors throughout. The ground floor features a generous drawing room, perfect for relaxed evenings, alongside a stunning open-plan kitchen, dining, and living area – ideal for modern family life and entertaining. A practical utility room and cloakroom complete the downstairs accommodation.

Upstairs, the home continues to impress with a principal bedroom suite, offering comfort and privacy, along with three further well-proportioned bedrooms. The layout is completed by three stylish bathrooms, two of which are en suite.









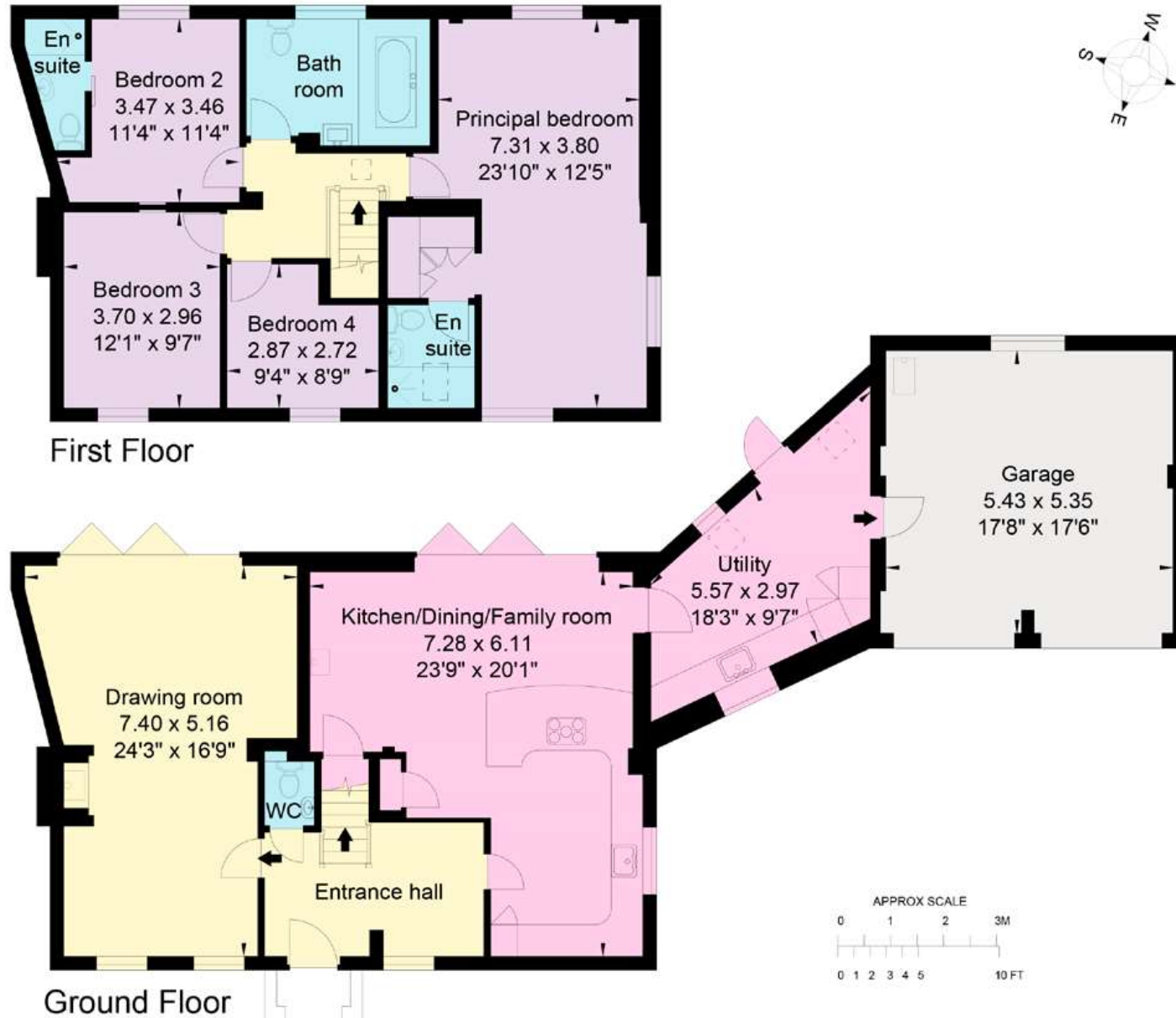
GARDENS AND GROUNDS

The property is further enhanced by a large driveway, providing ample parking for several vehicles and giving direct access to the double garage.

To the rear lies one of Willow Cottage's most outstanding attributes: a beautifully maintained and well-stocked garden, offering an idyllic escape. An inviting patio area is perfect for outdoor dining and entertaining, while the expansive lawns, mature planting, and peaceful surroundings create a space that is both elegant and welcoming.

The gardens are truly enviable and set Willow Cottage apart as a rare opportunity on the open market – a home sure to attract considerable interest.





Approximate Gross Internal Area
 House: 180 sq m / 1,939 sq ft
 Garage: 29 sq m / 313 sq ft
 Total: 209 sq m / 2,252 sq ft

This plan is for layout guidance only. Not drawn to scale unless stated. Windows and door openings are approximate. Whilst every care is taken in the preparation of this plan, please check all dimensions, shapes and compass bearings before making any decisions reliant upon them.

We would be delighted
to tell you more.

William Ward-Jones
01789 206951
william.ward-jones@knightfrank.com

Knight Frank Stratford-upon-Avon
Bridgeway House, Bridgeway,
Stratford-upon-Avon, CV37 6YX

[knightfrank.co.uk](https://www.knightfrank.co.uk)

Your partners in property

1. Particulars: These particulars are not an offer or contract, nor part of one. You should not rely on statements given by Knight Frank in the particulars, by word of mouth or in writing ("information") as being factually accurate about the property, its condition or its value. Neither Knight Frank nor any joint agent has any authority to make any representations about the property, and accordingly any information given is entirely without responsibility on the part of Knight Frank. 2. Material Information: Please note that the material information is provided to Knight Frank by third parties and is provided here as a guide only. While Knight Frank has taken steps to verify this information, we advise you to confirm the details of any such material information prior to any offer being submitted. If we are informed of changes to this information by the seller or another third party, we will use reasonable endeavours to update this as soon as practical. 3. Photos, Videos etc: The photographs, property videos and virtual viewings etc. show only certain parts of the property as they appeared at the time they were taken. Areas, measurements and distances given are approximate only. 4. Regulations etc: Any reference to alterations to, or use of, any part of the property does not mean that any necessary planning, building regulations or other consent has been obtained. A buyer must find out by inspection or in other ways that these matters have been properly dealt with and that all information is correct. 5. Fixtures and fittings: A list of the fitted carpets, curtains, light fittings and other items fixed to the property which are included in the sale (or may be available by separate negotiation) will be provided by the Seller's Solicitors. 6. VAT: The VAT position relating to the property may change without notice. 7. To find out how we process Personal Data, please refer to our Group Privacy Statement and other notices at <https://www.knightfrank.com/legals/privacy-statement>.

Particulars dated August 2025. Photographs and videos dated August 2025. All information is correct at the time of going to print. Knight Frank is the trading name of Knight Frank LLP. Knight Frank LLP is a limited liability partnership registered in England and Wales with registered number OC305934. Our registered office is at 55 Baker Street, London W1U 8AN. We use the term 'partner' to refer to a member of Knight Frank LLP, or an employee or consultant. A list of members names of Knight Frank LLP may be inspected at our registered office. If you do not want us to contact you further about our services then please contact us by either calling 020 3544 0692, email to marketing.help@knightfrank.com or post to our UK Residential Marketing Manager at our registered office (above) providing your name and address.

Date: 03 July 2026
Our reference: STR012506018

Willow Cottage, Brome Hall Lane, Lapworth, Solihull, B94 5RD

We have pleasure in enclosing details of the above property for which we are quoting a guide price of £899,995.

Please let us know if you need any further information about the property or surrounding area and we will be delighted to provide it.

Full details of all our properties and a wide range of services can be viewed online at knightfrank.co.uk. You can also receive early information on new properties coming on to the market by signing up to [My Knight Frank](#).

For additional information or to make arrangements to view the property, please get in touch.



KNIGHT FRANK LLP

Enc:

William Ward-Jones
Partner, Office Head
+44 1789206951
william.ward-jones@knightfrank.com

Knight Frank, Stratford
Bridgeway House, Bridgeway, Stratford upon Avon, CV37 6YX
+44 1789 297 735

knightfrank.co.uk

Your partners in property

Knight Frank LLP is a limited liability partnership registered in England and Wales with registered number OC305934. Our registered office is at 55 Baker Street, London W1U 8AN. We use the term 'partner' to refer to a member of Knight Frank LLP, or an employee or consultant. A list of members' names of Knight Frank LLP may be inspected at our registered office.

Regulated by RICS

V4.3 Sep 24