



3, Cole Hall Mews, Hills Lane, Shrewsbury, SY1 1QD
£800 Per Month



3, Cole Hall Mews, Hills Lane, Shrewsbury, SY1 1QD

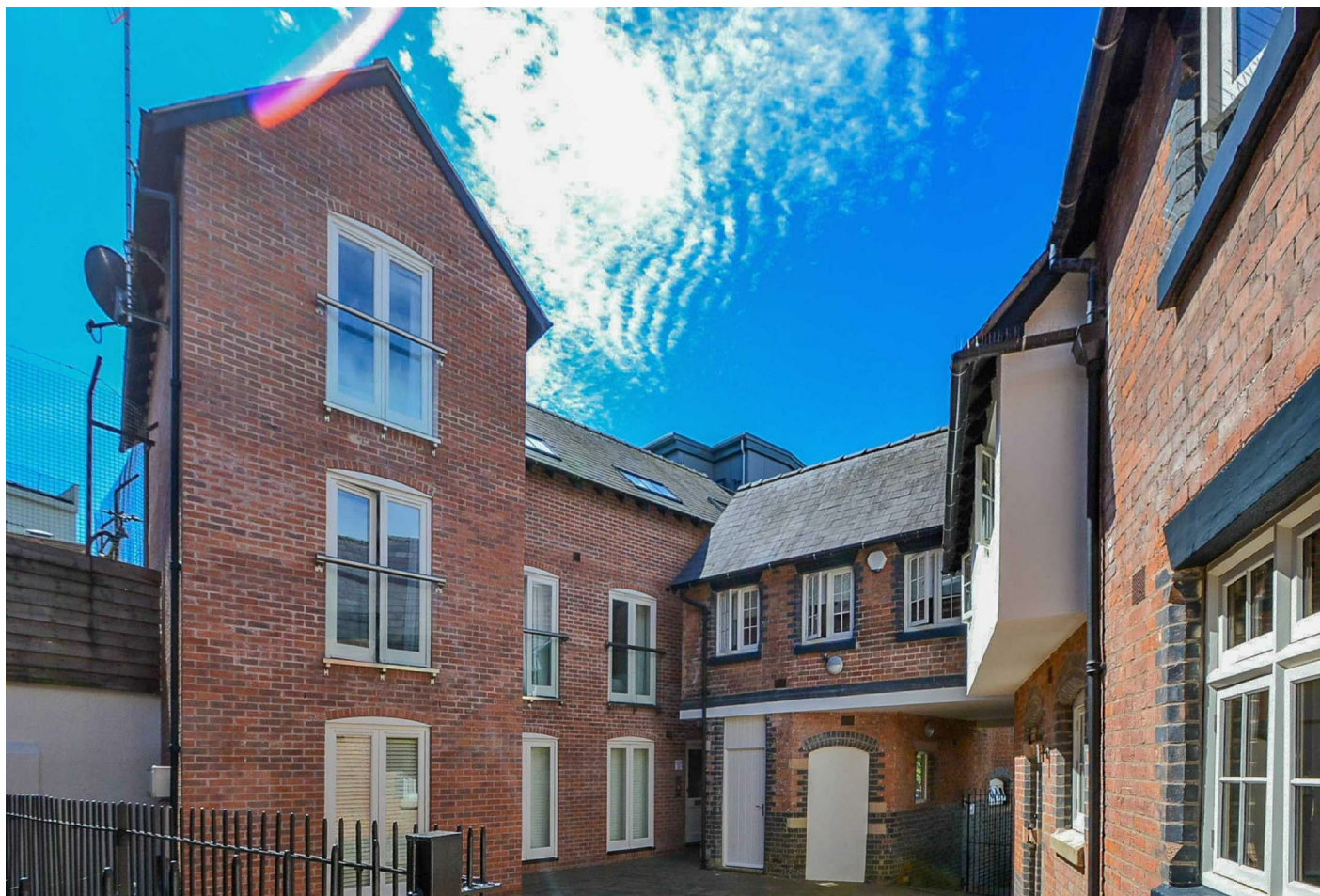
£800 Per Month

VIRTUAL TOUR AVAILABLE - A beautifully presented and uniquely designed one bedroom mews property of character, finished to a very high standard throughout, occupying a fantastic position quietly tucked away within an attractive and secure courtyard setting in the heart of Shrewsbury town centre.

Available: Immediately

Description

Comprising: Entrance hall with understairs storage and airing cupboard with slatted shelving for storage, large double bedroom with large integrated double wardrobe, bathroom with pressurised shower over bath. Stairs to living space, large living and dining area, kitchen with integrated full height fridge/freezer, washer/dryer, electric oven/hob and slimline dishwasher. Electric heating. Double glazing. No parking included. EPC E.



Unfurnished

Council Tax Band: A

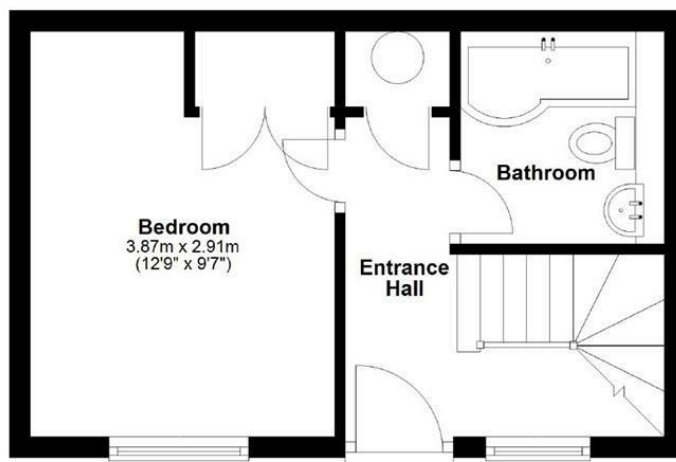
Available: 11th May 2026

EPC: E

Floor Plans

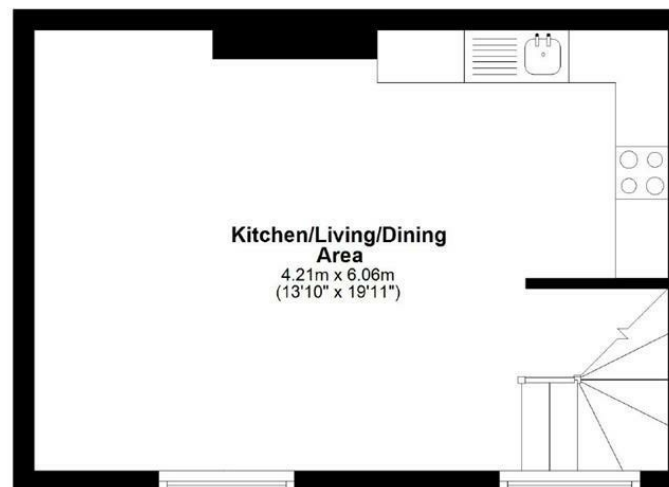
Ground Floor

Approx. 23.5 sq. metres (252.7 sq. feet)



First Floor

Approx. 25.5 sq. metres (274.6 sq. feet)



Total area: approx. 49.0 sq. metres (527.3 sq. feet)

We accept no responsibility for any mistake or inaccuracy contained within the floorplan. The floorplan is provided as a guide only and should be taken as an illustration only. The measurements, contents and positioning are approximations only and provided as a guidance tool and not an exact replication of the property.
Plan produced using PlanUp.

These particulars, whilst believed to be accurate are set out as a general outline only for guidance and do not constitute any part of an offer or contract. Intending purchasers should not rely on them as statements of representation of fact, but must satisfy themselves by inspection or otherwise as to their accuracy. No person in this firm's employment has the authority to make or give any representation or warranty in respect of the property.