



Beethoven Street, W10

Share of Freehold - £425,000

Set within a handsome Victorian terrace, this beautifully presented one-bedroom garden flat offers a stylish retreat in a vibrant Queens Park pocket. The property perfectly balances period charm with a clean, contemporary aesthetic throughout.

At the heart of the home is a spacious reception room featuring warm wood floors and crisp decor. This leads to a separate, intelligently designed kitchen with curved stone-effect worktops and a window overlooking the private outdoor space. The large double bedroom at the front enjoys a bright bay window, providing a peaceful environment with ample room for a home office setup.

The standout feature is the private rear garden—a secluded, 25-foot oasis perfect for alfresco dining and entertaining. Located on a quiet, tree-lined street, you are moments from the boutique cafes of Queen's Park and the culture of Ladbroke Grove. This home comes with its own private entrance.



020 7328 2828

enquiries@cameronsstiff.co.uk

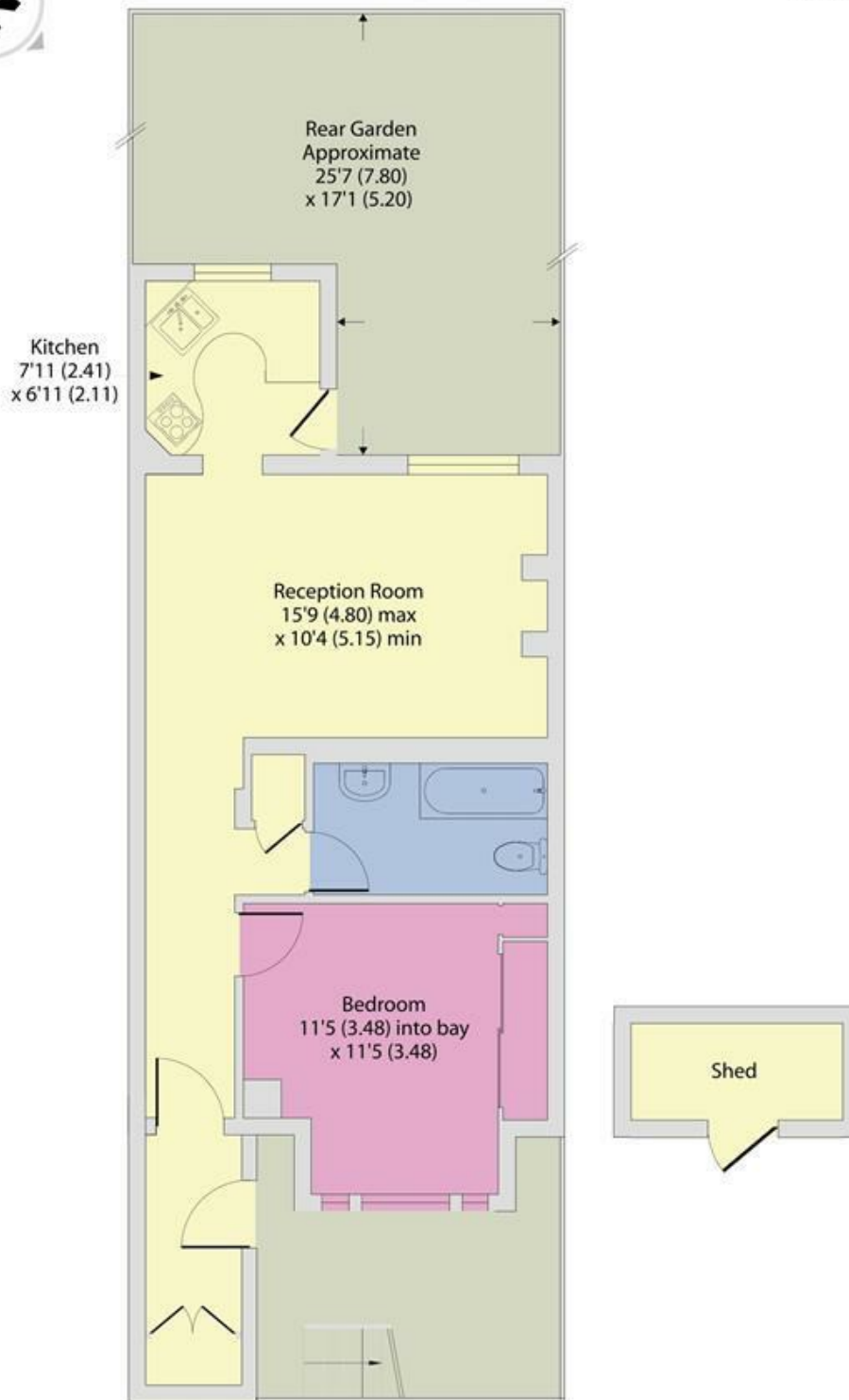
cameronsstiff.co.uk



Beethoven Street, London, W10

Approximate Area = 517 sq ft / 48 sq m (exclude shed)

For identification only - Not to scale



LOWER GROUND FLOOR

EPC: C

Ref: 16311210



Floor plan produced in accordance with RICS Property Measurement 2nd Edition, Incorporating International Property Measurement Standards (IPMS2 Residential). © nichecom 2026. Produced for Camerons Stiff & Co. REF: 708631

