



Guide Price

£260,000

Leasehold

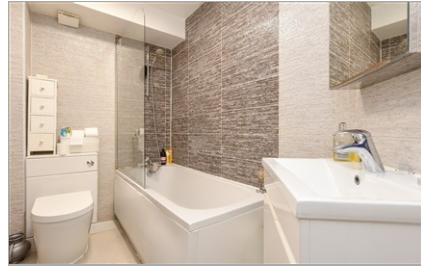
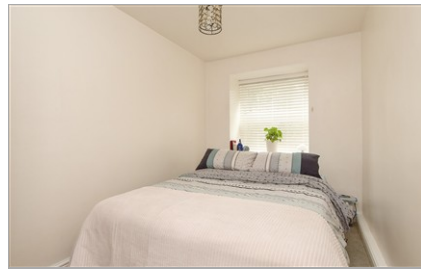
2x  1x  1x 

**Fiveacre Close,
Thornton Heath, Surrey,
CR7**

OVER 60?

Secure this property
for up to **59% less!**

cubitt & west
Helping you move forwards



Main features

- **2 Bed. First floor apartment**
- **Recently renovated with fitted kitchen & contemporary bathroom**
- **Residents parking**
- **Ideal for first-time buyers, professionals or investors**
- **Close to local amenities and transport links.**

Accommodation

FIRST FLOOR

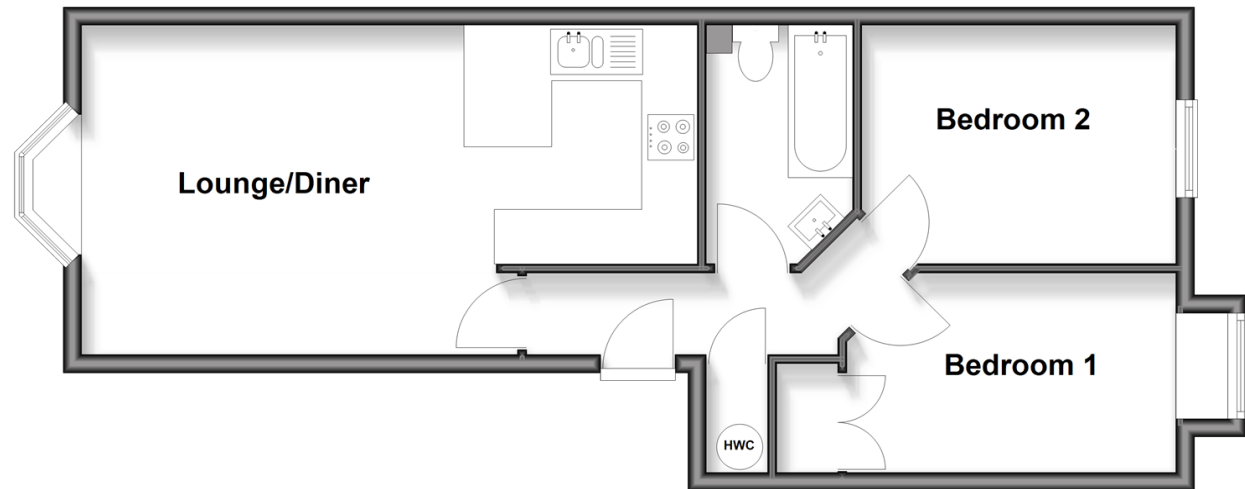
Hallway
 Lounge / Diner: 23'11 x 11'10 (7.29m x 3.61m)
 Bathroom
 Bedroom 1: 11'2 x 8'7 (3.41m x 2.62m)
 Bedroom 2: 11'8 x 7'2 (3.56m x 2.19m)

OUTSIDE

Communal Gardens
 Resident Parking

First Floor

Approx. 50.6 sq. metres (544.4 sq. feet)



Call Shirley - 020 8654 3037 ■ cubittandwest.co.uk

■ Legal advice should be taken to verify fixtures/fittings, planning, alterations and/or lease details
 ■ Through a Homewise Home For Life Plan people aged 60+ can secure this property for up to 59% less, by purchasing a Lifetime Lease

■ Appliances & services are untested, dimensions are approximate and floor plans are not to scale



21711982/20260112/MS/PH