



## Weston Street, SE1

### £685,000

A smartly presented modern apartment featuring a bright open-plan living area with a fully fitted kitchen, dining space, and access to a private balcony. The property offers two spacious double bedrooms and is complimented by a contemporary three-piece bathroom suite.

Residents are within easy reach of Bermondsey Street, Borough Market, and the South Bank, with a wide range of cultural attractions, restaurants, and amenities right on the doorstep. This prime location combines convenience with vibrant city living, ideal for professionals and those seeking the best of central London.

### Features

- Share of Freehold
- Open Plan Living Space
- Private Balcony
- Lift Access & Secure Entry
- Residents' Bike Storage
- Great Transport Links



## Weston Street, SE1

The apartment offers an impressive sense of space throughout, comprising two generous double bedrooms, each with built-in wardrobes, a large family bathroom, and a substantial living area.

Underfloor heating runs through every room, complemented by solid oak flooring in the living room and kitchen, enhancing both comfort and style.

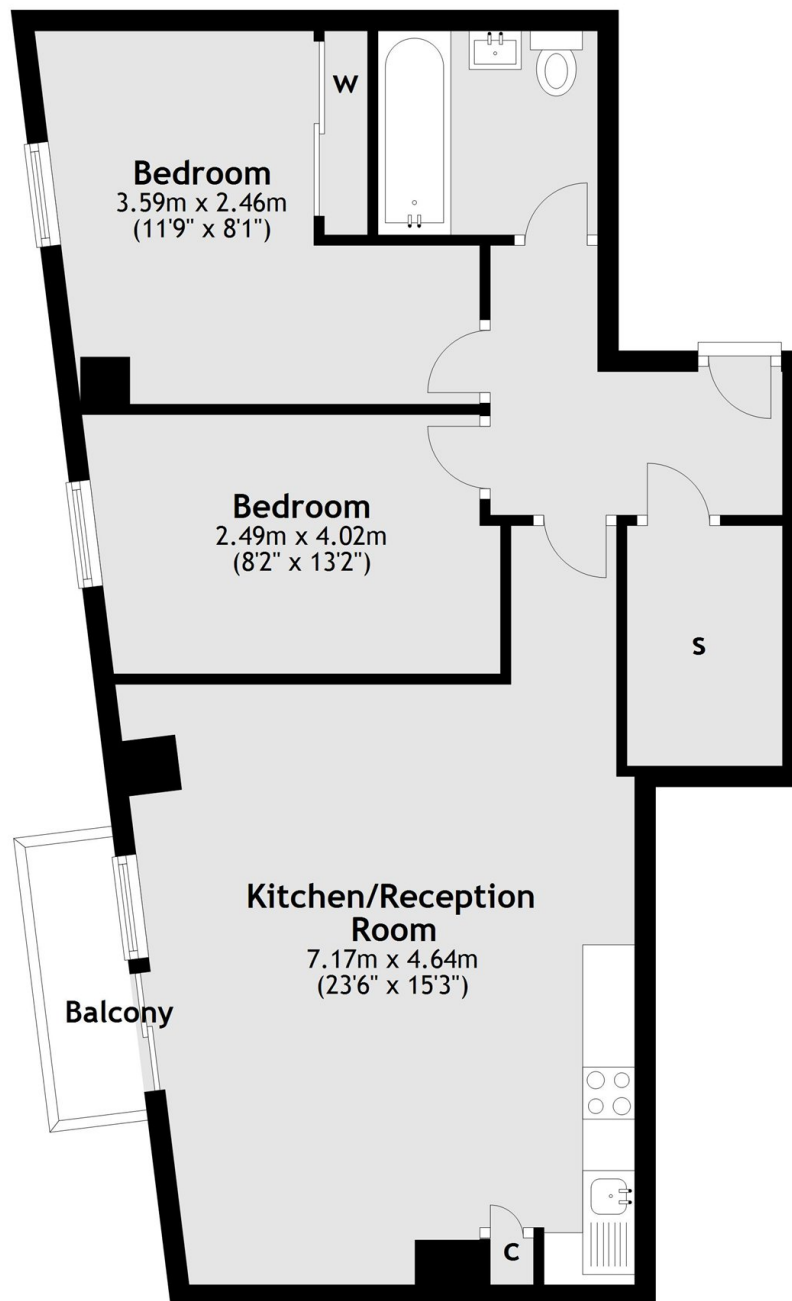
The fully fitted kitchen features modern appliances and ample storage, with plenty of space for a large dining table and separate seating area. A private balcony completes the property, providing valuable outdoor space for relaxing or entertaining.

Located within the highly sought-after and exclusive The Valentine, completed in 2015 to an exceptional standard, residents benefit from a secure entranceway, lift access, and a dedicated bike store.



# Weston Street, London, SE1

## First Floor



Main area: Approx. 64.8 sq. metres (697.2 sq. feet)  
Plus balconies, approx. 2.5 sq. metres (27.0 sq. feet)