



## Rosslyn Road, TW1

£2,395 Per calendar month

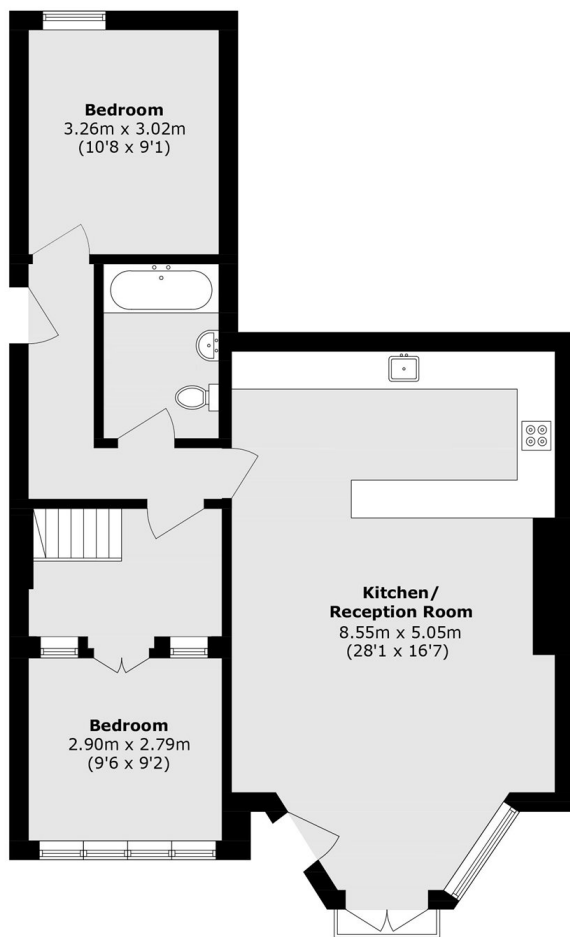
Set on the raised ground floor of an impressive Victorian villa, this elegant two double bedroom apartment combines grand proportions with comfortable modern living. The spacious open-plan living area features high ceilings, solid wood floors and a feature fireplace, flowing into a generous kitchen with an extensive breakfast bar. Period details remain throughout, including original cornicing, while the principal bedroom is a standout space, formerly the grand entrance to the villa, complete with original joinery, decorative fretwork and a mezzanine level.

Rosslyn Road is situated on one of the prime roads in East Twickenham, just 0.2 miles from St Margarets village shops, cafés and train station. Richmond town centre and riverside is only a mile away offering excellent amenities and transport links. Marble Hill Park and Moor Mead Park are close by.

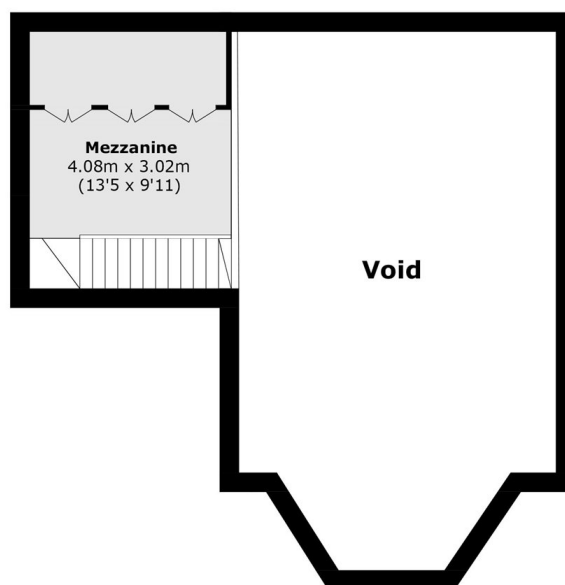
### Features

- Victorian Conversion
- Two Bedrooms
- Raised Ground Floor
- High Ceilings
- Feature Fireplace
- Unique Principle Bedroom

# Rosslyn Road, Twickenham, TW1



**Ground Floor**



**First Floor**

Total area (approx.): 92.7 sq. m (997.8 sq. ft)  
(Including Mezzanine & Excluding Void)