



Primary Homes & Lettings are pleased to offer this well presented and spacious first floor two bedroom apartment situated in Oakley Park, Coleview within walking distance to all local amenities, schools and easy access to the A419/A420 and M4 motorway. The accommodation comprises of lounge/diner, kitchen, two bedrooms and bathroom. The property also benefits from off road parking and underfloor heating. Viewing is highly recommended.



**£950 PCM**

**SWAN CLOSE**

Coleview, Swindon, Wilts SN3 4QB

**PRIMARY**  
HOMES & LETTINGS

AVAILABLE FROM 11.08.26

First Floor Apartment

Two Bedrooms

Allocated Parking With Additional Visitors  
Spaces

Lounge/Diner

Kitchen

Bathroom

Underfloor Heating

Excellent Location

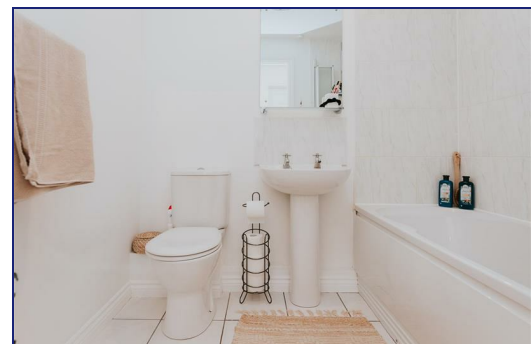
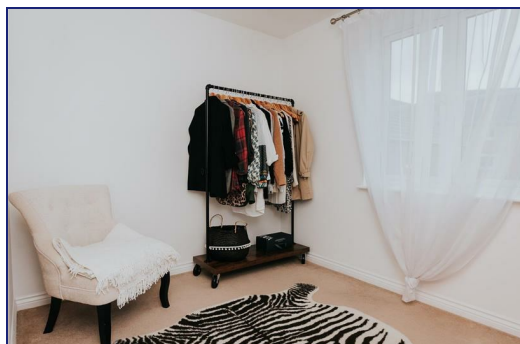
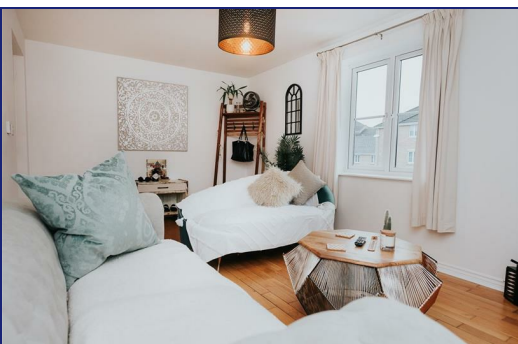
EPC Rating - C

### **Viewings**

Strictly via our Swindon office telephone  
(01793) 641641.

### **Photographs**

Please note that photos were taken prior to  
the current tenants moving into the property.



**01793 641641**

101 Commercial Road, Swindon, SN1 5PL

[info@primaryhomesandlettings.co.uk](mailto:info@primaryhomesandlettings.co.uk)

**PRIMARY**  
HOMES & LETTINGS