



PRIDEAUX ROAD, SW9

£465,000

- One bedroom
- First floor
- Well-presented
- Period features
- Great location
- Energy rating: B

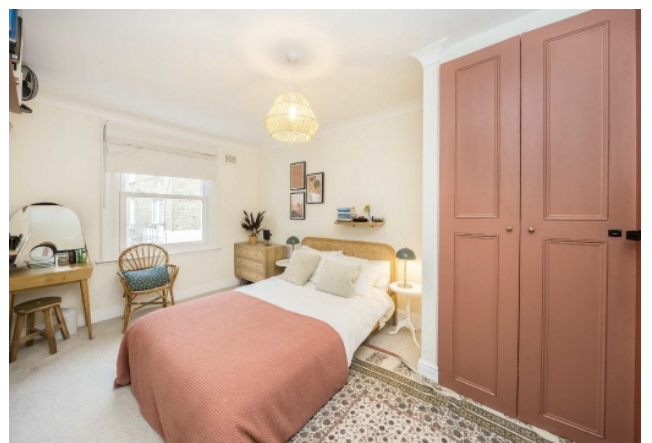




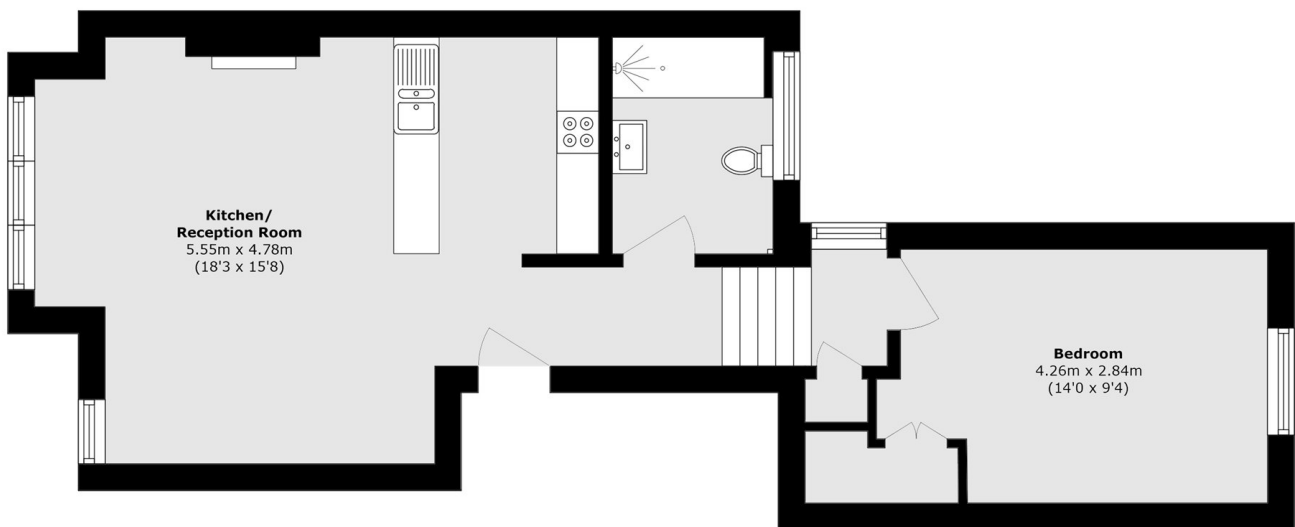
ABOUT THE HOME

A beautifully presented first floor flat in a converted end of terrace Victorian house. The accommodation comprises a spacious open-plan living/dining room with adjacent kitchen, large bedroom with storage and a modern bathroom. The property further benefits from a long lease with right to manage.

Prideaux Road forms part of a popular residential enclave offering excellent proximity to Clapham North (Northern line) Underground and Clapham High Street (Windrush line) Overground stations (0.4 mile). The amenities of Brixton, Stockwell and Clapham High Street are also close at hand, along with the independent local shops, cafés and bars on nearby Landor Road.







Total area (approx.): 48.7 sq. m (524.2 sq. ft)

JACKSONS CLAPHAM

73 Abbeville Road, London,
SW4 9JN

Sales: 020 8487 3177

Lettings: 020 8487 3178

Energy Rating: B We aim to make our particulars both accurate and reliable. However they are not guaranteed; nor do they form part of an offer or contract. If you require clarification on any points then please contact us, especially if you're traveling some distance to view. Please note that appliances and heating systems have not been tested and therefore no warranties can be given as to their good working order.