

St. John's Avenue, SW15

£2,450 Per calendar month

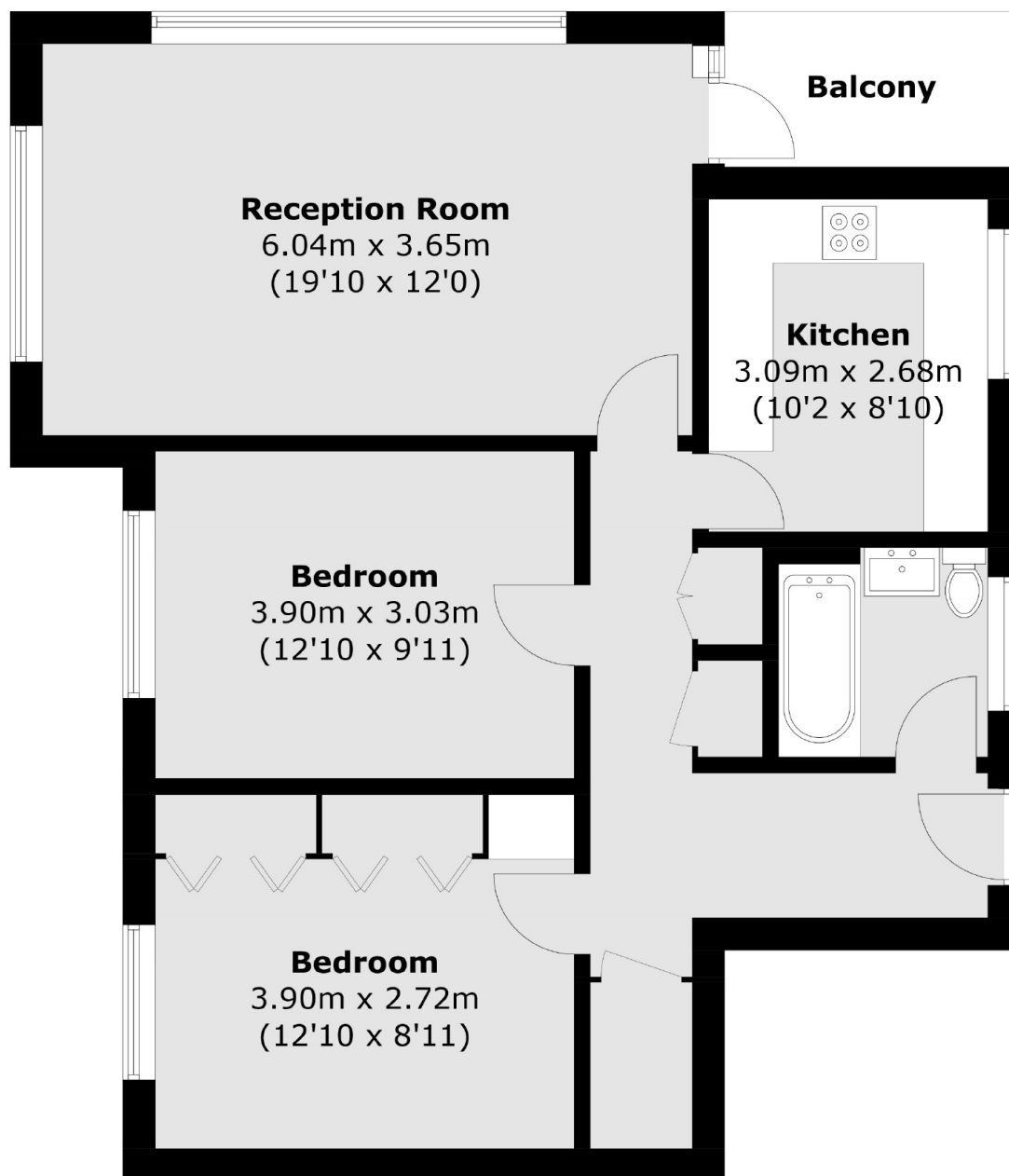
A large and bright flat on the top floor of a stylish mid-century building centrally located. The flat has a fantastic dual aspect reception room and both bedrooms are very generous in size. The property further benefits from a private balcony and a garage.

St John's Avenue is a quiet residential street that runs parallel to the Upper Richmond Road and connects Carlton Drive to Putney Hill. The property is in close proximity to all the amenities Putney High Street has to offer.

Features

- Top Floor Flat
- Spacious Reception
- Two Bedrooms
- Separate Kitchen
- Balcony
- Garage Storage

**St. John's Avenue,
London, SW15**



Fourth Floor

Total area (approx.): 74.0 sq. m (796.5 sq. ft)
Balcony: 4.0 sq. m (43 sq. ft)

Dexters

Putney
176 Putney High Street
London
SW15 1RS
Lettings
020 8789 9090

Energy Rating: D. We aim to make our particulars both accurate and reliable. However they are not guaranteed; nor do they form part of an offer or contract. If you require clarification on any points then please contact us, especially if you're traveling some distance to view. Please note that appliances and heating systems have not been tested and therefore no warranties can be given as to their good working order.

 **RICS** | Regulated
Estate Agent
and Letting Agent

[dexters.co.uk](https://www.dexters.co.uk)