

**V&H**  
HOMES



Ashley Cottages Crampshaw Lane, Ashted

**V&H**  
HOMES

£595,950

# Ashley Cottages Crampshaw Lane

Ashtead

Council Tax band: E

Tenure: Freehold

EPC Energy Efficiency Rating: D

EPC Environmental Impact Rating: E

- Three Bedroom Victorian Cottage
- Upstairs Bathroom
- Two Reception Rooms
- Fitted Kitchen
- Large Utility and WC
- Front and Rear Gardens
- Off Street Parking
- South Ashtead Lanes Location
- No Chain
- EPC Rating D





Offered for sale with no ongoing chain, this beautiful period cottage has three double bedrooms and a luxurious upstairs bathroom. With spacious living accommodation, both front and rear gardens PLUS off street parking, this desirable cottage is a must view.

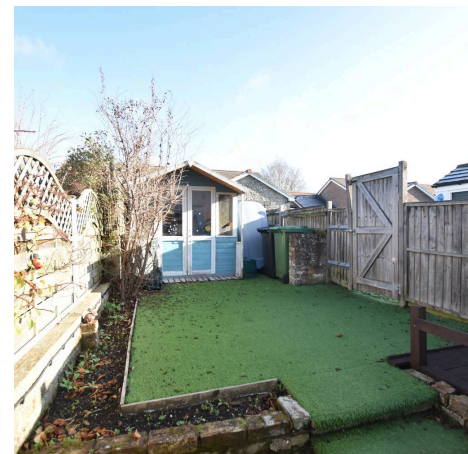
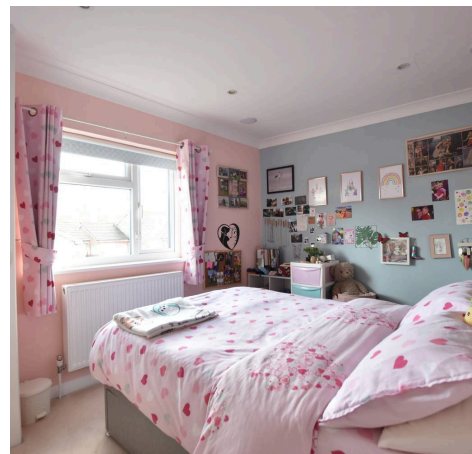
You enter into a cosy lounge, filled with natural charm and perfect for relaxing at the end of the day. Moving through, the layout opens into a comfortable dining room, ideally positioned for family meals or entertaining guests. From here, the space leads naturally into the fitted kitchen.

Beyond the kitchen, you discover a surprisingly spacious utility room—a real asset in a cottage of this era. This room provides excellent additional storage and workspace and includes a downstairs cloakroom, making the ground floor both practical and family-friendly.

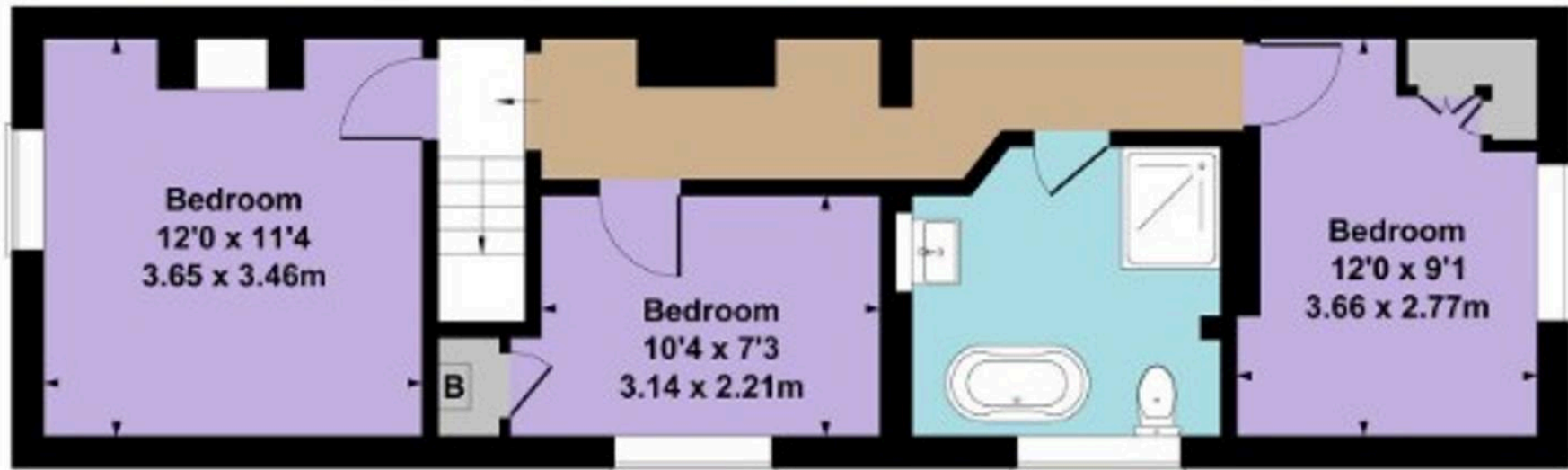
Heading upstairs, the property offers three well-proportioned bedrooms, each providing flexibility for family living, a home office, or visiting guests. The large family bathroom, also located on this level, adds to the comfortable and functional layout of the first floor.

Returning downstairs and stepping outside, the rear garden is a charming and well-landscaped retreat. A lovely summer house sits to the rear, offering a versatile space for hobbies, relaxation, or even a garden office. A side access gate provides useful convenience, while the front of the property includes off-street parking for one car, with ample scope to extend the parking area should additional spaces be required.

Situated within walking distance to Ashted Viallge, popular schools and amenities.

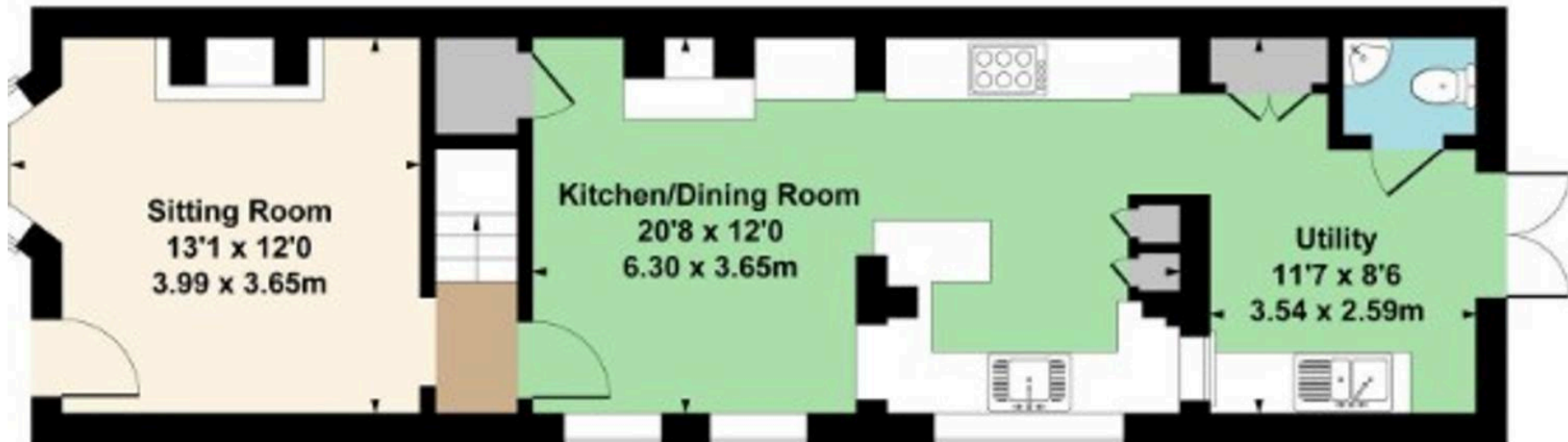


**Approximate Gross Internal Area**  
House 101.0 sq. m. (1087 sq. ft.)



**First Floor**

Floor Area 50.2 sq.m. (540 sq.ft.) approx



**Ground Floor**

Floor Area 50.8 sq.m. (547 sq.ft.) approx