



Sloane Avenue, SW3

£3,000 Per week

A spacious one bedroom apartment in a portered mansion building with a lift and on site porter. The property has been finished to a high standard and perfect for a couple or single tenant.

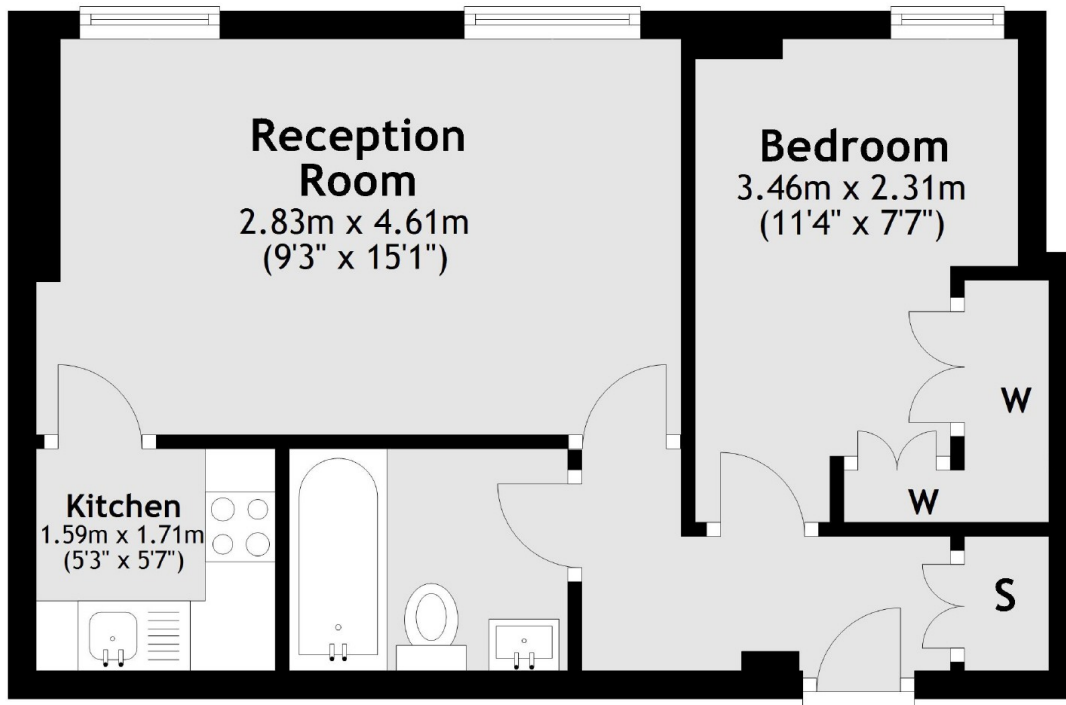
Sloane Avenue Mansions is ideally located between Kings Road and Brompton Road in the heart of Chelsea. Just moments from all the exciting shops and restaurants of Sloane Avenue, Fulham Road, Walton Street and Kings Road.

Features

- Bedroom With Storage
- Modern Kitchen
- Eighth Floor
- On-Site Porter
- Private Balcony
- Lift Access

**Sloane Avenue,
London, SW3**

Eighth Floor



Total area: approx. 32.3 sq. metres (348.2 sq. feet)