



A STUNNING FIRST FLOOR APARTMENT IN PRIME SOUTH KENSINGTON

OFFERED ON AN UNFURNISHED BASIS THOUGH FURNITURE COULD BE SUPPLIED SUBJECT TO NEGOTIATION. FURNITURE SHOWN IS FROM PRIOR TO THE LAST TENANCY. NEWLY REPAINTED THROUGHOUT. A Stunning State-of-the-Art First Floor Apartment with Terraces & Garden Access in Prime South Kensington. Nestled within an elegant period building overlooking the prestigious Gledhow Gardens, this exquisite two-bedroom, two-bathroom first floor flat has been finished to the highest of standards, combining modern luxury with timeless architectural charm.

The welcoming entrance hall sets the tone with limed oak flooring and leads to a grand reception room, complete with original fireplace, high ceilings, and large bay window. Triple French doors open to a sunny front terrace, ideal for entertaining. A modern kitchen with top-of-the-line appliances and a breakfast bar flows seamlessly for both casual and formal dining.

The principal bedroom suite is a luxurious retreat, featuring a striking GARDEN OUTLOOK with two door access to the rear terrace, a full wall of built-in wardrobes, and a beautifully appointed en-suite bathroom. A second generous double bedroom also enjoys ample built-in storage. The guest bathroom includes a large walk-in shower with high-quality tiling and underfloor heating.

This is a truly amazing property which must be seen. Please call to book an appointment.





ACCOMMODATION

Entrance Hall: Spacious Reception with Dining Area and Bay Window onto Balcony Overlooking Communal Gardens: State of the Art Semi-Open Plan Kitchen with Breakfast Bar: Two Double Bedrooms with Fitted Cupboards: Two High Specification Bathrooms (One Master En-Suite): Utility Room: Bedroom Master Suite with Balcony Overlooking Communal Gardens

LOCATION

All manner of conveniences are available within a short walk including fine shops, restaurants and cafés. The nearest tube station is Gloucester Road which is connected by the District, Circle and Piccadilly lines as well as being well located for access to South Kensington, Knightsbridge, Kensington High Street and Chelsea.



ACCESS TO TWO COMMUNAL GARDENS

PROPERTY INFORMATION

Property Type: Flat/Apartment

Construction Materials: Brick

Utilities:

Electricity supply: Mains Supply

Water supply: Mains

Sewerage: Mains

Heating: Gas Mains

Broadband/ Internet connection: Fttc

Mobile Signal Coverage: Please check Ofcom Mobile Checker

Broadband speed: Please check Ofcom Broadband Checker

Parking Arrangements: Street Parking Permit Required

Terms

Price: £1,595 Per Week

Terms Deposit: 6 weeks

Council Name : RBKC

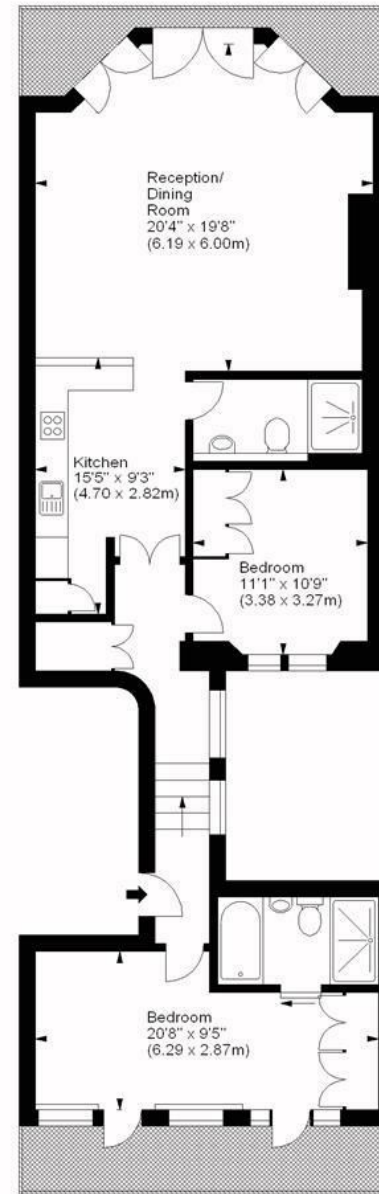
Council Tax Band: G & Garden Square

Energy Efficiency Rating		
	Current	Potential
Very energy efficient - lower running costs		
(92 plus) A		
(81-91) B		
(69-80) C		
(55-68) D		
(39-54) E		
(21-38) F		
(1-20) G		
Not energy efficient - higher running costs		
England & Wales		
EU Directive 2002/91/EC		
	57	74



Gledhow Gardens, SW5

Approx. Gross Internal Area
1010 Sq Ft - 93.83 Sq M



First Floor

For illustration purposes only. Not to scale.
All measurements are taken and shown at floor level.
www.r3photography.co.uk © Photography / Floor Plans / Lease Plans / EPCs

FEATURES

- 2 Double bedrooms
- Reception with high ceilings/ Entrance hall with wood floors
- 2 Superb Bathrooms with under floor heating
- Guest shower room with large walk in shower fully tiled
- Kitchen with top end appliances and breakfast bar
- Access to 2 communal gardens
- Front and rear terraces
- Fire place / Bay window and triple French doors
- Utility cupboard with washing machine
- Offered Unfurnished but can be Furnished subject to negotiation



0207 370 4343

<http://www.whiteestates.co.uk>

sk@white-estates.co.uk

176 Old Brompton Road, London, SW5 0BA