



3brfb Fairgreen Way, Selly Oak, Birmingham, B29 6EW

£122 Per Week



2026/2027 ACADEMIC YEAR Superior Student Accommodation Suitable for both Students and Professionals

- Rent: £122pppw
- LOW DEPOSIT: £400/person (based on a group of 4 people)
- 15 minutes walk to University of Birmingham
- 3 minutes to Selly Oak Train Station
- Refurbished 4 double bedroom student house
- Fully Furnished
- Two modern bathrooms
- Well-equipped kitchen
- Cavity Wall Insulation
- Double Glazing
- Modern Gas Central Heating
- Spacious garden with patio space
- Ample cul-de-sac parking
- Security Alarm

Available: Rent with Built-in Unlimited Bills Package for only £151.90 per person per week

Newly refurbished 4-bedroom student house on Fair Green Way, Selly Oak, designed for modern student living. This spacious property offers a well-equipped kitchen, cozy lounge, and two contemporary bathrooms. Conveniently located near Heeley Road Train Station and the University of Birmingham, it's ideal for students. The house features comfortable bedrooms and a garden for relaxation. Enjoy a comfortable and well-connected student life in this updated property.

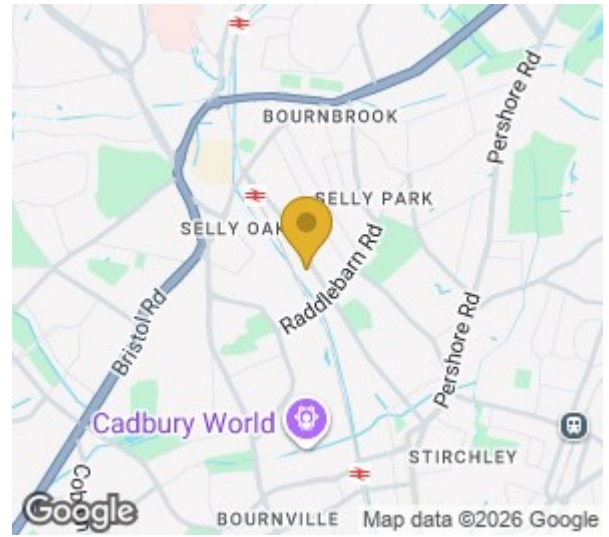
Don't miss out on this exceptional opportunity - contact us today to make this beautifully furnished property your home for the upcoming academic year!

Viewing

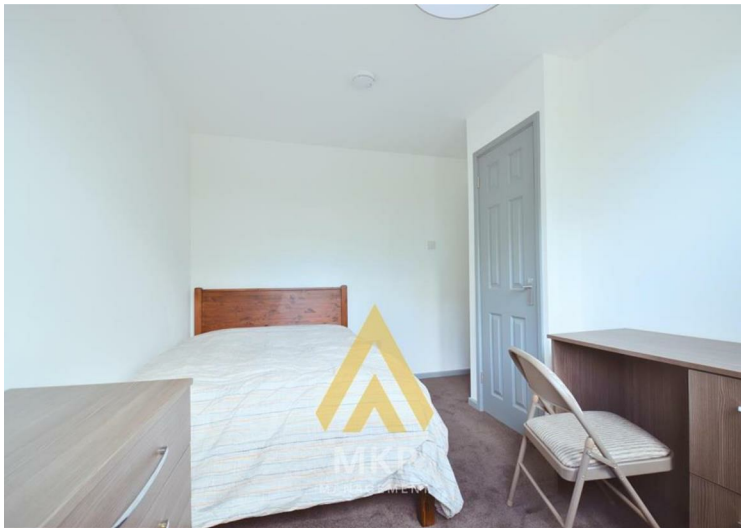
Please contact our MKP MANAGEMENT Office on 0121 472 5897 if you wish to arrange a viewing appointment for this property or require further information.



12 Fair Green Way, Selly Oak, Birmingham



| Energy Efficiency Rating | | Environmental Impact (CO ₂) Rating | |
|---|---------|--|---|
| Very energy efficient - lower running costs | Current | Potential | Very environmentally friendly - lower CO ₂ emissions |
| (92 plus) A | | 87 | (82 plus) A |
| (81-91) B | | | (81-91) B |
| (69-80) C | 75 | | (69-80) C |
| (55-68) D | | | (55-68) D |
| (38-54) E | | | (38-54) E |
| (21-38) F | | | (21-38) F |
| (1-20) G | | | (1-20) G |
| Not energy efficient - higher running costs | | | Not environmentally friendly - higher CO ₂ emissions |
| England & Wales | | EU Directive 2002/91/EC | England & Wales |



These particulars, whilst believed to be accurate are set out as a general outline only for guidance and do not constitute any part of an offer or contract. Intending purchasers should not rely on them as statements of representation of fact, but must satisfy themselves by inspection or otherwise as to their accuracy. No person in this firm's employment has the authority to make or give any representation or warranty in respect of the property.