



Sage & Co.

Property Agents

Sage & Co.
Property Agents
Professional Independent Local Estate Agency



14 Buttercup Court, Ty Canol, Cwmbran, NP44 6JY Asking Price £325,000

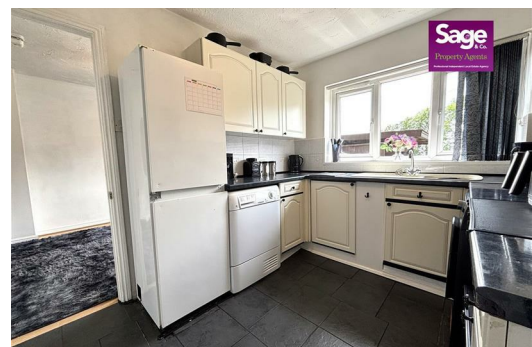
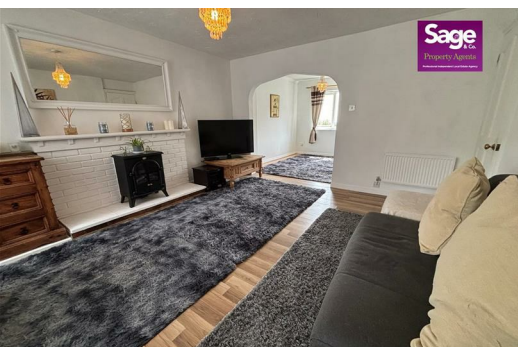
Situated within the highly sought-after Buttercup Court development in Ty Canol, this spacious FOUR BEDROOM DETACHED property offers an excellent opportunity for families seeking generous living accommodation in a convenient location.

The well-presented ground floor comprises a large living room, a dining area, a fitted kitchen, and a convenient ground floor WC, providing ideal space for modern family living and entertaining. To the first floor, a bright and spacious landing leads to the impressive master bedroom with en-suite shower room, three further well-proportioned bedrooms, and a family bathroom suite. The rear-facing bedrooms enjoy panoramic views, adding to the property's appeal.

Externally, the home benefits from an enclosed rear garden, perfect for relaxing, outdoor dining, while a driveway to the front and integral garage provides off-road parking. Ideally located close to Cwmbran Town Centre, well-regarded schools, and excellent transport links, this property combines space, comfort, and convenience in a popular residential setting.

Early viewing is highly recommended to fully appreciate all that this fantastic family home has to offer.

EPC Rating: D, Council Tax Band: E



Lakeside House, Llantarnam Parkway, Cwmbran, NP44 3GA
Telephone: 01633 838 888 Email: cwmbran@sageandco.co.uk

www.sageandco.co.uk

Entrance

Part glazed front entrance door

Entrance Hall

Radiator, wooden panelling, door to:

Living Room

Double glazed box window to front, two radiators, feature fire surround, stairs to first floor, opening to:

Dining Area

Double glazed window to rear, radiator, door to:

Kitchen

Fitted with a range of base and eye level wall units, work preparation surfaces over, inset composite one and a half bowl sink and drainer unit, ceramic tile splash backs, space for cooker, space for fridge/freezer, plumbing for automatic washing machine, space for tumble dryer, double glazed window to rear, radiator, door to:

Rear Porch

Radiator, part glazed door to side, door to:

Cloakroom/WC

Low level WC, pedestal wash hand basin, opaque double glazed window to side, coving

First floor

Access to loft space, double glazed window to side, radiator, built in storage cupboard, doors to:

Bedroom One

Double glazed window to rear with panoramic views, radiator, built in wardrobes, door to:

En-suite

Three piece suite comprised: electric shower cubicle, low level WC, pedestal wash hand basin, radiator, electric shaver point, opaque double glazed window to side, extractor fan

Bedroom Two

Double glazed window to rear with panoramic views, fitted wardrobe, radiator

Bedroom Three

Double glazed window to front, double radiator

Bedroom Four

Double glazed window to front, radiator

Bathroom

Three piece suite comprised - panelled bath, pedestal wash hand basin, low level WC, ceramic tile splash backs, electric shaver point, radiator, opaque double glazed window to front, extractor fan

Outside

Front - Driveway parking for two vehicles, side access to rear.

Rear - Enclosed rear garden with panoramic views, comprised of gravel, artificial grass and paved areas, ideal for enjoying out door dining and entertaining.

Tenure

We have been advised that the property is Freehold, to be verified.

