



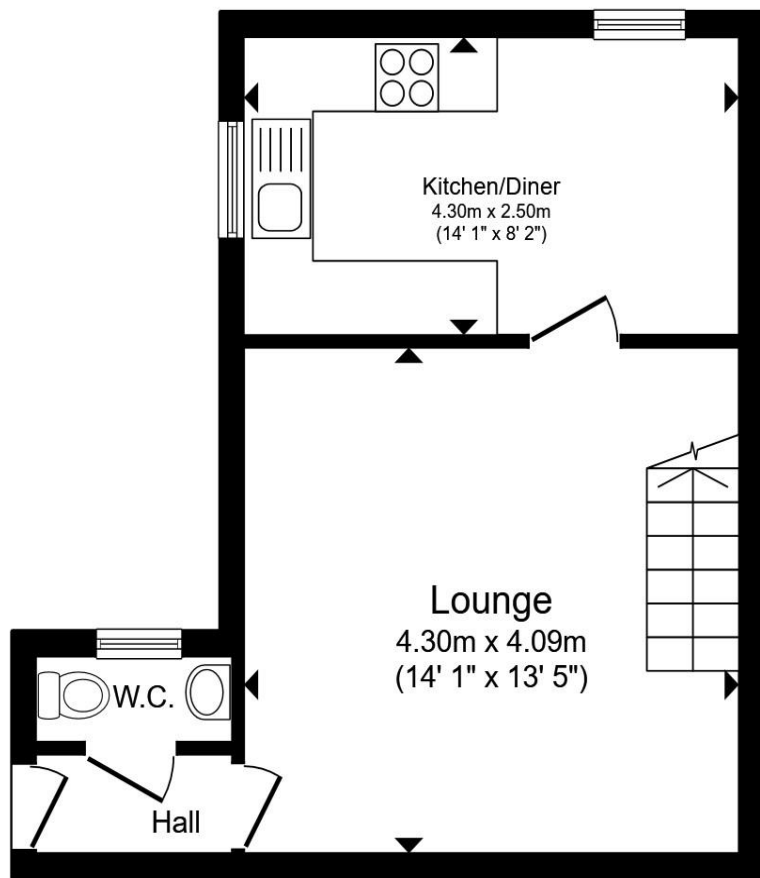
Flowers Yard, Chippenham SN15 3BN

welcome to

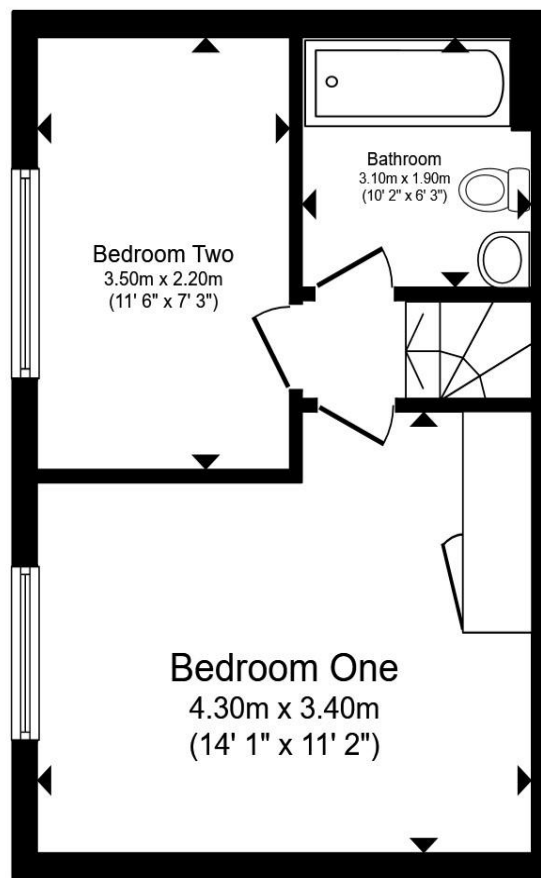
Flowers Yard, Chippenham

A charming two-bedroom end-terrace house in Flowers Yard offering a bright lounge, practical kitchen, two bedrooms and family bathroom. Set in a quiet cul-de-sac with allocated parking and easy access to Chippenham's amenities and transport links, an ideal first-time or investment purchase.





Ground Floor



First Floor

Entrance Porch

Lounge

14' 1" x 13' 5" (4.29m x 4.09m)

Kitchen/Diner

14' 1" x 8' 2" (4.29m x 2.49m)

Landing

Bedroom One

14' 1" x 11' 2" (4.29m x 3.40m)

Bedroom Two

11' 6" x 7' 3" (3.51m x 2.21m)

Family Bathroom

Allocated Parking

Total floor area 59.6 m² (642 sq.ft.) approx

This floor plan is for illustrative purposes only. It is not drawn to scale. Any measurements, floor areas (including any total floor area), openings and orientation are approximate. No details are guaranteed, they cannot be relied upon for any purpose and they do not form part of any agreement. No liability is taken for any error, omission or misstatement. A party must rely upon its own inspection(s). Powered by www.propertybox.io



welcome to

Flowers Yard, Chippenham

- Two Bedroom Terrace House
- Spacious Accommodation Throughout
- Ideally Situated Close to Town Centre
- Allocated Parking
- No Onwards Chain

Tenure: Freehold EPC Rating: C
Council Tax Band: B

£240,000



Please note the marker reflects the
postcode not the actual property

view this property online allenandharris.co.uk/Property/CHP111747



Property Ref:
CHP111747 - 0003

1. MONEY LAUNDERING REGULATIONS Intending purchasers will be asked to produce identification documentation at a later stage and we would ask for your co-operation in order that there is no delay in agreeing the sale. 2. These particulars do not constitute part or all of an offer or contract. 3. The measurements indicated are supplied for guidance only and as such must be considered incorrect. Potential buyers are advised to recheck measurements before committing to any expense. 4. We have not tested any apparatus, equipment, fixtures or services and it is in the buyers interest to check the working condition of any appliances. 5. Where an EPC, or a Home Report (Scotland only) is held for this property, it is available for inspection at the branch by appointment. If you require a printed version of a Home Report, you will need to pay a reasonable production charge reflecting printing and other costs. 6. We are not able to offer an opinion either written or verbal on the content of these reports and this must be obtained from your legal representative. 7. Whilst we take care in preparing these reports, a buyer should ensure that his/her legal representative confirms as soon as possible all matters relating to title including the extent and boundaries of the property and other important matters before exchange of contracts.


allen & harris



01249 655255



chippenham@allenandharris.co.uk



37 Market Place, CHIPPENHAM, Wiltshire,
SN15 3HT



allenandharris.co.uk